

stuart  
thomas



- POPULAR LOCATION
- THREE BEDROOMS
- WELL FITTED KITCHEN
- ATTRACTIVE LOUNGE DINER

50 Sandown Road, Thundersley, Essex, SS7 3SJ

£350,000

This immaculate and impressive three bedroom semi detached house has to be viewed internally. On a bold corner plot with a detached garage at the rear with secure parking there is a well fitted kitchen, attractive Lounge/Diner useful utility space three first floor bedrooms and bathroom. Call now!



## Property Description

### ENTRANCE PORCH

Double glazed entrance door leads to the entrance porch. Further double glazed door leads to the:-

### ENTRANCE HALL

Stairs lead to the first floor. Thermostat for the central heating. Two radiators. Coving. Wood effect flooring.

### LOUNGE DINER

17' 10" x 12' (5.44m x 3.66m) This very attractive room has double glazed sliding patio doors leading to the rear garden. Two radiators. Double glazed bay window to the front. Coving. Feature fireplace with a log effect electric fire. Wood effect flooring.

### KITCHEN

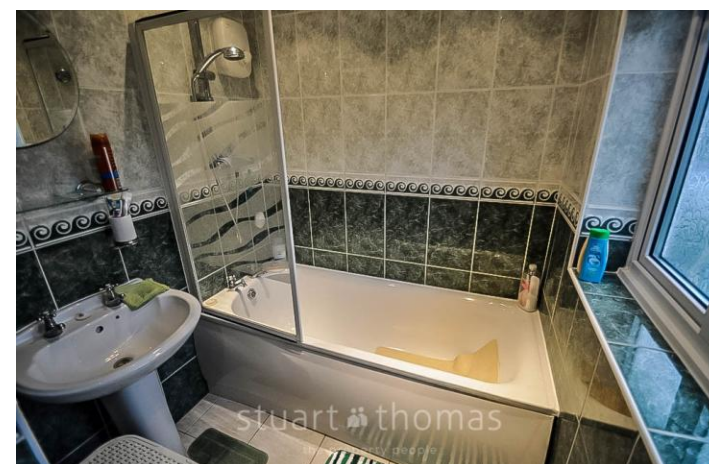
11' 2" x 11' 2" (3.4m x 3.4m) Well fitted with units at eye and base level with ample work surfaces over. Useful built in storage cupboard. One and half bowl single drainer stainless steel sink unit with a mixer tap over. Space and plumbing for a washing machine. Radiator. 4 ring gas hob with an extractor cooker hood over and a built under oven. Double glazed door and window to the rear garden.

### UTILITY SPACE

6' 2" x 3' 11" (1.88m x 1.19m) This useful space off the entrance hall has a double glazed window to the front. Built in cupboard housing the electric heater. Wood effect flooring.

### LANDING

Cupboard housing the gas fired central heating boiler. Double glazed obscure window to the rear. Coving. Access to the loft via a loft ladder.





#### BEDROOM ONE

12' x 9' 8 plus recess" (3.66m x 2.95m) Double glazed window to the front. Two radiators. Coving. Dado rail.

#### BEDROOM TWO

11' 10" x 8' 1 plus recess" (3.61m x 2.46m) Double glazed window to the front. Coving. Radiator.

#### BEDROOM THREE

7' 11" x 7' 10" (2.41m x 2.39m) Double glazed window to the rear. Double radiator. Coving.

#### BATHROOM

3 piece suite comprising a low level wc, pedestal wash hand basin and panelled bath with a shower screen and electric shower over. Double radiator. Extractor fan. Two double glazed windows to the rear. Tiled floor.

#### GARAGE

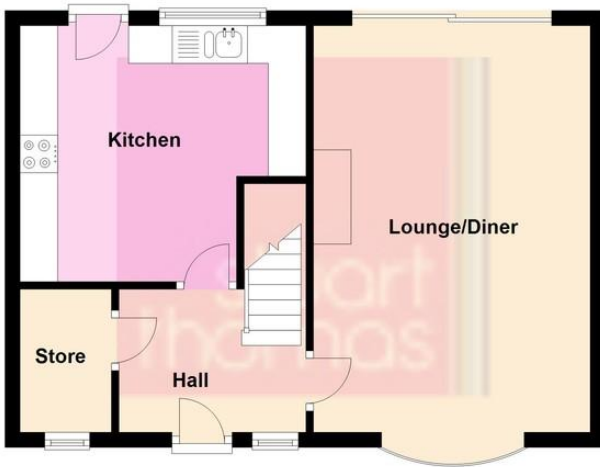
Detached to the rear of the property approached via Cheltenham Drive. Double wooden gates lead to further parking in front of the garage.

#### REAR GARDEN

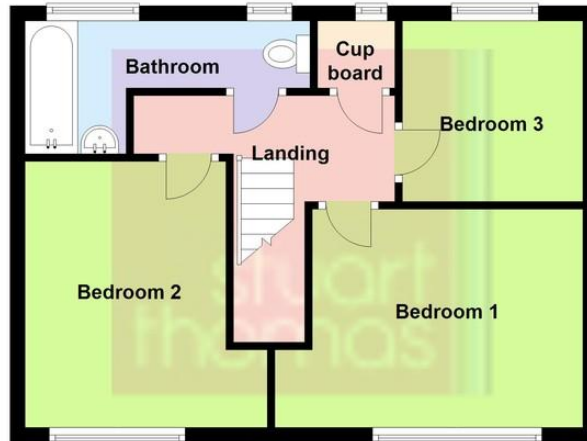
This good size rear garden is wide across its plot with a split level lawn. Summerhouse. Established shrubs. Paved patio. Outside water supply. Access to the front and driveway.



Ground Floor

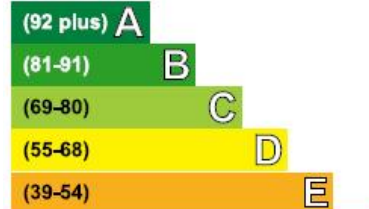


First Floor



### Energy Efficiency Rating

Very energy efficient - lower running costs



Current	Potential
	86
64	