



STUART THOMAS
ESTATES



- SUPERBLY EXTENDED FAMILY HOME
- MASTER BEDROOM SUITE
- EN SUITE SHOWER ROOM
- WALKING DISTANCE CHALKWELL STATION

66 Woodfield Road, Leigh-on-Sea, SS9 1ER

£550,000

What a FABULOUS FAMILY HOME. Within a SHORT WALK TO CHALKWELL RAILWAY STATION and THE BEACH this cleverly EXTENDED home now includes a SUPERB MASTER BEDROOM SUITE to the top floor with a JULIETTE BALCONY and EN SUITE SHOWER ROOM. There are 3 further bedrooms and the family bathroom, downstairs is the very ATTRACTIVE LOUNGE with FIREPLACE, DINING ROOM with FRENCH DOORS to the garden, fitted kitchen and CONSERVATORY.



Property Description

ENTRANCE HALL

Wooden entrance door with lead light glazed panels leads to the entrance hall. Wood flooring. Coving. Radiator. Spindled staircase leads to the first floor. Inset ceiling spotlights. Understairs storage cupboard.

LOUNGE

14' 7" x 11' 5" (4.44m x 3.48m) This very attractive room has a double glazed bay window to the front aspect with plantation style shutters to the lower half of the window. Coving. Ornate plaster mouldings to the ceiling with an ornate ceiling rose. Feature brick fireplace with an open hearth. Double radiator. Twin part glazed doors lead to the dining room.

DINING ROOM

11' 3" x 9' (3.43m x 2.74m) Another very attractive room with double glazed twin French doors leading to the rear garden. Double radiator.

KITCHEN

14' 2" x 8' 11" (4.32m x 2.72m) This fitted kitchen has a range of units at eye and base level with ample work surfaces over. Built in wine rack. Single drainer stainless steel sink unit with a mixer tap over. Space and plumbing for a washing machine and tumble dryer. Wall mounted gas fired central heating boiler. Double glazed windows to the rear and side. Tiling to working areas. Stable door leads to the conservatory.

CONSERVATORY

8' x 7' 4" (2.44m x 2.24m) Leading from the kitchen with twin double glazed French doors leading to the rear garden. Laminate flooring. Stable door leads to the kitchen.

LANDING





Stairs lead to the second floor. Built in storage cupboards. Inset ceiling spotlights. Radiator. Double glazed window to the front the lower half has plantation shutters.

BEDROOM ONE

17' 8" x 9' 8 max" (5.38m x 2.95m) This SUPERB MASTER bedroom is on the top floor and gas double glazed French doors leading to the Juliette balcony which offers terrific views towards the Thames Estuary. Twin skylight windows to the front aspect. Inset ceiling spotlights. Open plan to the :-

EN SUITE

With a 3 piece white suite comprising a low level wc vanity wash hand basin with a cupboard under and a good size shower with a fixed shower head and hand held shower. Extractor fan. Double glazed obscure window to the rear. Tiled floor. Heated towel rail.

BEDROOM TWO

14' 3" x 8' 3 plus wardrobe depth" (4.34m x 2.51m) Originally the master bedroom with a double glazed bay window to the front aspect with plantation shutters to the lower half. Double radiator. Fitted wardrobes to the recesses. Inset ceiling spotlights.

BEDROOM THREE

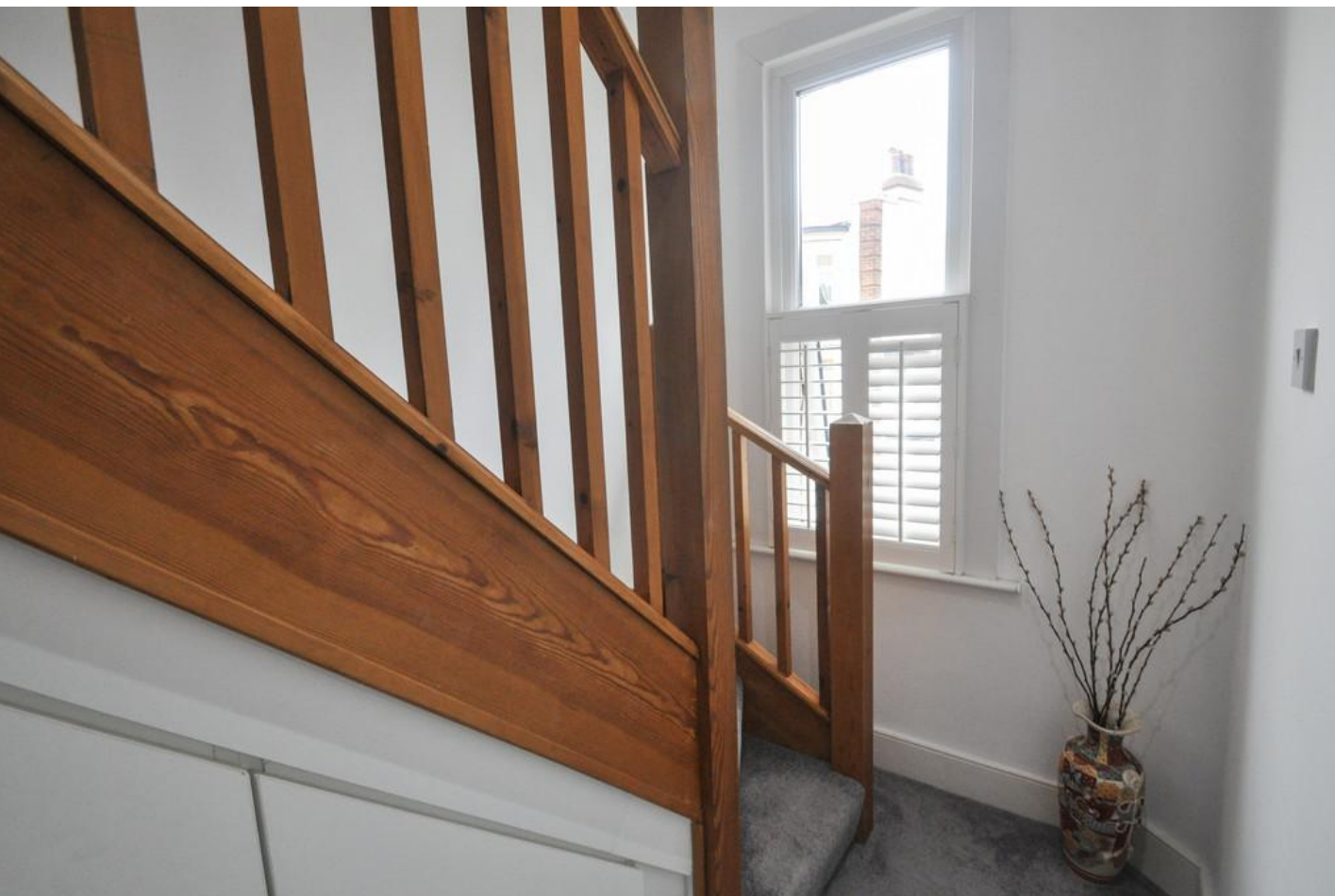
11' 3" x 9' 8" (3.43m x 2.95m) Double glazed window to the rear. Radiator.

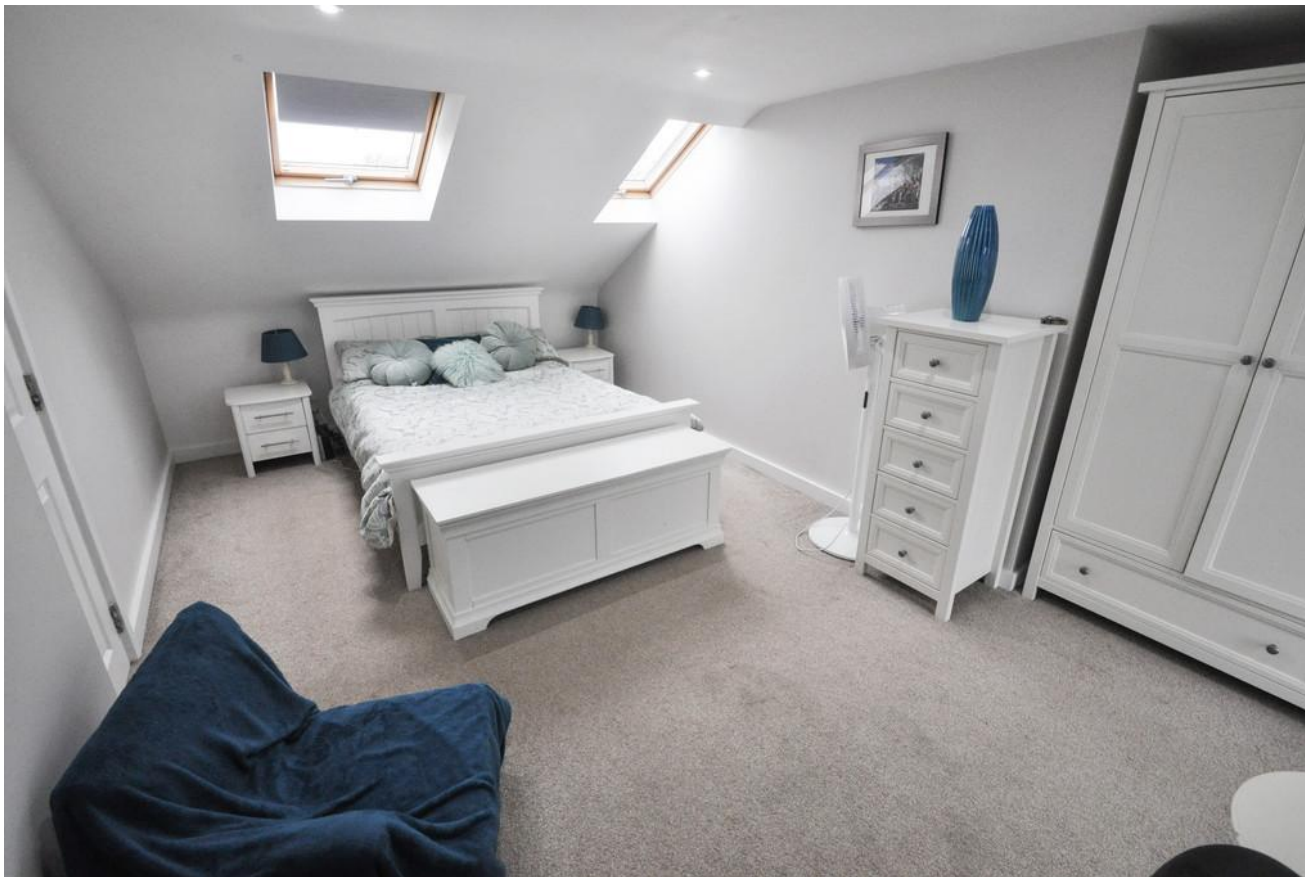
BEDROOM FOUR/STUDY

8' 11" x 5' 1 plus door recess" (2.72m x 1.55m) Double glazed window to the rear. Radiator.

FAMILY BATHROOM

With a low level wc and a concealed cistern, vanity wash hand

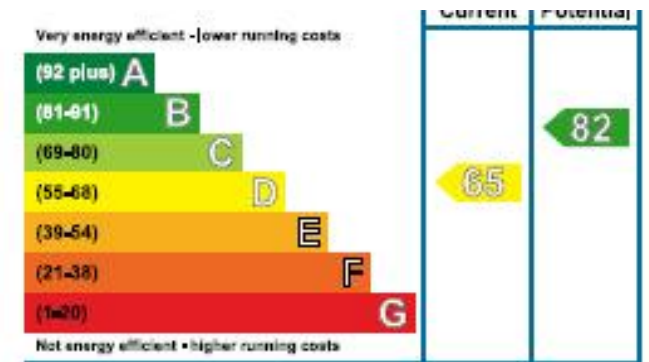




basin with cupboards under and a matching unit above with an inset mirror. Double glazed obscure window to the side. Heated towel rail. Extractor fan. Tiled floor. Shower bath with screen and an independent shower and bath filler. Inset ceiling spotlights.

REAR GARDEN

In excess of 45' deep neatly laid to lawn with well established flower borders. Shingled area. Paved patio. Screen fencing.



294 Kiln Road, Benfleet, Essex,
SS7 1QT

stestates.co.uk
01702 558110
info@stestates.co.uk

Agents Note: Whilst every care has been taken to prepare these sales particulars, they are for guidance purposes only. All measurements are approximate are for general guidance purposes only and whilst every care has been taken to ensure their accuracy, they should not be relied upon and potential buyers are advised to recheck the measurements.