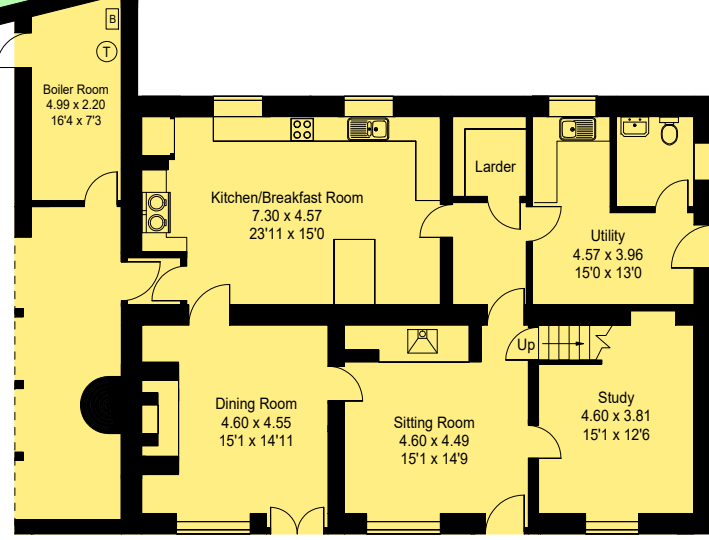
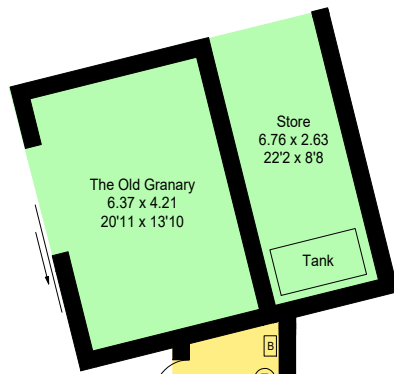
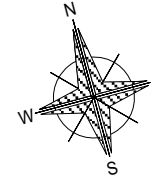


Wyndham Farm, Silton, Dorset SP8 5AE

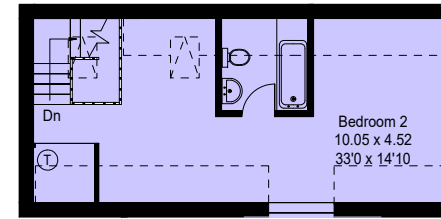
House Approximate Gross Internal Area :- 262 sq m / 2819 sq ft

Annexe Approximate Gross Internal Area :- 151 sq m / 1624 sq ft

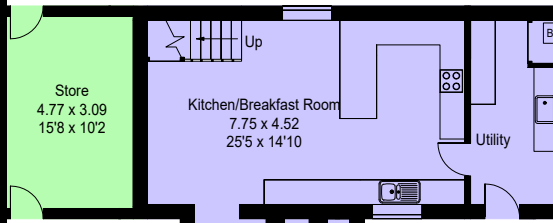
The Old Granary, Store & Boiler Room Approximate Gross Internal Area :- 89 sq m / 958 sq ft



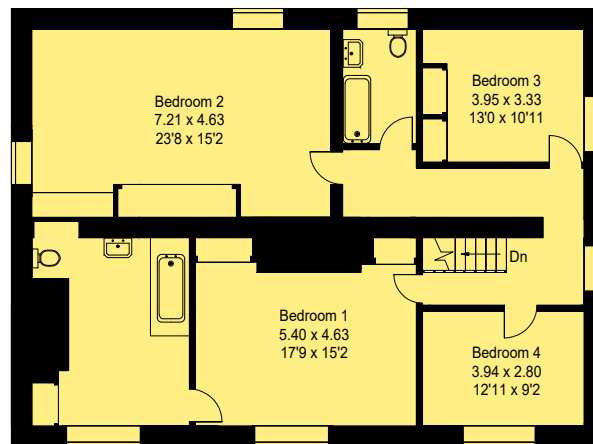
Ground Floor



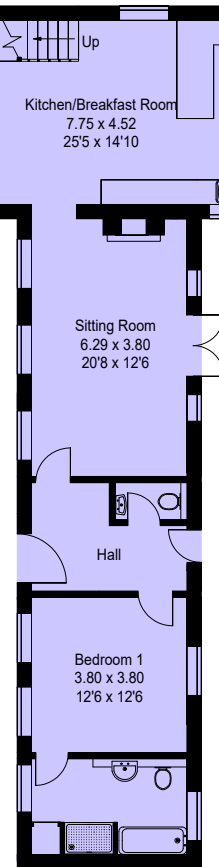
First Floor



Annexe



First Floor



First Floor

= Reduced headroom below 1.5 m / 5'0

PRODUCED FOR FOX GRANT 2021

This illustration is for identification purposes only. Measured & drawn in accordance with RICS guidelines. Not drawn to scale, unless stated. Dimensions shown are to the nearest 7.5 cm / 3" and are through cupboard / wardrobes to wall surfaces where possible or where indicated by arrow heads. Whilst every care is taken in the preparation of this plan, please check all dimensions shapes & compass bearings before making any decisions reliant upon them.