



STUART THOMAS
ESTATES



- NEWLY REFURBISHED
- SOUGHT AFTER LOCATION
- THREE BEDROOMS
- SUPERBLY FITTED KITCHEN

26 Mornington Crescent, Hadleigh, SS7 2HP

Guide Price £425,000

Open Home Saturday 1st October. Call for an appointment to view. Refurbished to a high standard is this three bedroom semi detached family home located in this popular location.. Offering a NEWLY FITTED KITCHEN with APPLIANCES, spacious entrance hall, large Lounge/Diner and a good size bathroom with bath and separate shower cubicle. Shared driveway leads to the garage.



Property Description

This immaculate refurbished family home is well situated in a popular location and now offers 3 bedroom accommodation including a luxury bathroom, superbly fitted kitchen with integrated appliances and good size Lounge/Diner.

ENTRANCE HALL

A double glazed entrance door leads to the spacious entrance hall. Stairs lead to the first floor with a cupboard under. Double glazed obscure window to the flank. Radiator. Twin part glazed doors lead to the Lounge/Diner.

LOUNGE/DINER

22' 3" x 11' 9" (6.8m x 3.6m) This good size room has a double glazed window to the front aspect and double glazed french doors and adjacent windows leading to the rear garden. Two radiators. Open plan to the:-

KITCHEN

9' 10" x 8' 2" (3.0m x 2.5m) This newly fitted kitchen has a range of units at eye and base level with ample wood effect work surfaces over. Integrated fridge, freezer, washing machine and dishwasher. A ceramic hob with an extractor cooker hood over and a built under oven. Single drainer stainless steel sink unit with a mixer tap over. Double glazed door to the rear. Inset ceiling spotlights. Tiled floor.

LANDING

Access to the loft. Double glazed window to the side.

BEDROOM ONE

12' 5" x 12' 1" (3.8m x 3.7m) Double glazed window to the front. Radiator.





BEDROOM TWO

12' 1" x 9' 6" (3.7m x 2.9m) Double glazed window to the rear. Radiator.

BEDROOM THREE

8' 10" x 8' 2" (2.7 max L shaped m x 2.5m) With a built in cupboard housing the gas fired combi central heating boiler. Double glazed window to the front.

BATHROOM

This newly fitted bathroom has a 4 piece white suite comprising a low level wc, vanity wash hand basin with cupboards under. Double ended bath with a mixer tap and shower attachment. Separate shower cubicle. Two obscure double glazed windows to the rear. Heated towel rail. Fully tiled to all visible walls and floor. Inset ceiling spotlights.

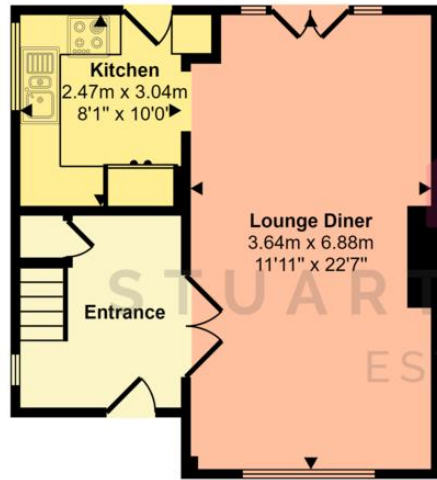
GARAGE

With an up and over door (currently not working) and personal door to the rear garden. Approached via shared driveway.

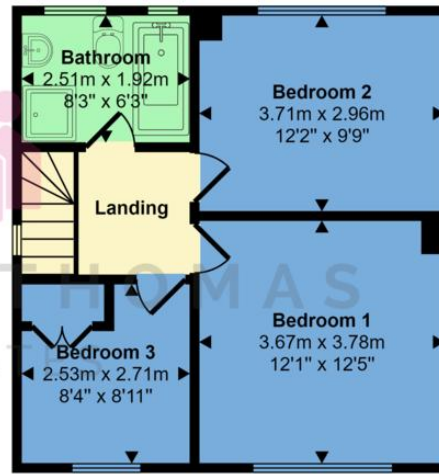
REAR GARDEN

Approximately 50' in length with a paved patio. Established shrubs. Access to the shared driveway.





Ground Floor



First Floor



This floorplan is only for illustrative purposes and is not to scale. Measurements of rooms, doors, windows, and any items are approximate and no responsibility is taken for any error, omission or mis-statement. Icons of items such as bathroom suites are representations only and may not look like the real items. Made with Made Snappy 360.

Score	Energy rating	Current	Potential
92+	A		
81-91	B		88 B
69-80	C		
55-68	D	67 D	
39-54	E		
21-38	F		
1-20	G		