

To Let



Flat 2, 78 Commercial Street, London, E1 6LY

Second-floor Victorian Conversion

£3,000 per calendar month

Net Lettings are delighted to offer this second-floor converted apartment situated in the heart of Spitalfields. Comprising a modern open-plan kitchen & living area, double bedroom & single bedroom/office, private terrace and a three-piece bathroom suite.

- Refurbished to a high standard
- Two bedrooms
- Victorian-period property
- Wood-sash windows
- High-specification kitchen & bathroom
- Private terrace
- Five minutes walk to Liverpool Street
- Short walk to Spitalfields Market

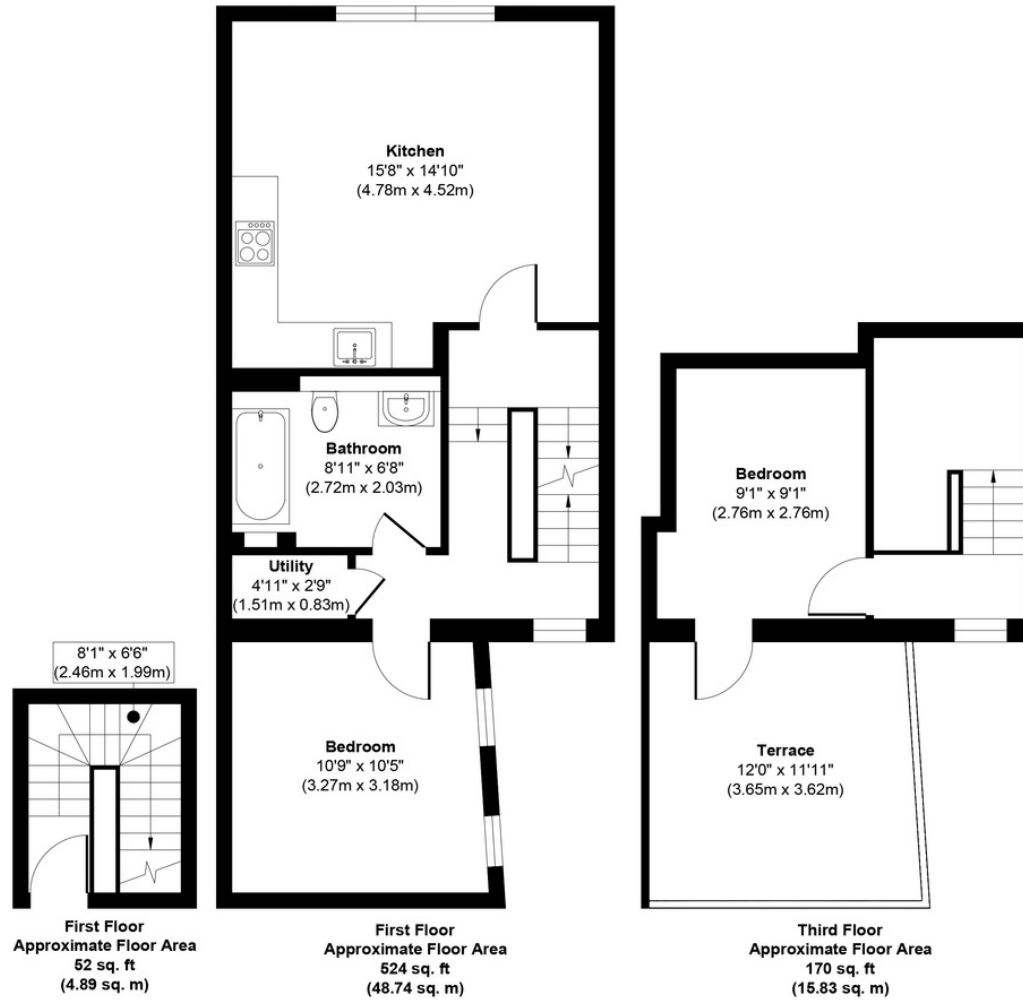
Viewings by appointment only

info@netlettings.com

0208 981 5551



F2 Commercial St



Approx. Gross Internal Floor Area 746 sq. ft / 69.46 sq. m

Illustration for identification purposes only, measurements are approximate, not to scale.
Produced by Elements Property

Location & Transport

 57 mins walk to Canary Wharf

 7 mins walk to Liverpool Street


 19 mins walk to Bank

 Aldgate East Underground - 0.3 miles | 6 mins walk

 Liverpool Street Station - 0.3 miles | 7 mins walk

 Shoreditch High Street Overground - 0.4 miles | 7 mins walk

 11 mins to Bank - Liverpool Street (Stop L)

 24 mins to Canary Wharf - Aldgate East Station (Stop H)

NET LETTINGS .COM





