

EST. 1999

WILLIAMS AND DONOVAN

EXCELLENCE IN ESTATE AGENCY

Beechwood, Folly Chase, Hockley, SS5 4SF



Guide Price:
£575,000 - £600,000

We are privileged to bring to market this stunning four bedroom semi detached chalet situated in Folly Chase which is arguable one of Hockley's most desirable locations. Having been improved by the current owners to a very high standard creating versatile living accommodation to the ground floor with featured high ceilings, large character windows and an unoverlooked rear outlook and large sweeping driveway to the front providing off street parking for several vehicles. Within walking distance to local amenities.

Viewing advised. Council Tax Band: C.
EPC Rating: C. Our Ref: 20453.

1 Woodlands Parade, Main Road, Hockley, Essex SS5 4QU

sales@wdhockley.com | sales@wdbenfleet.com | lettings@wdlets.com
01702 200666 | www.williamsanddonovan.com

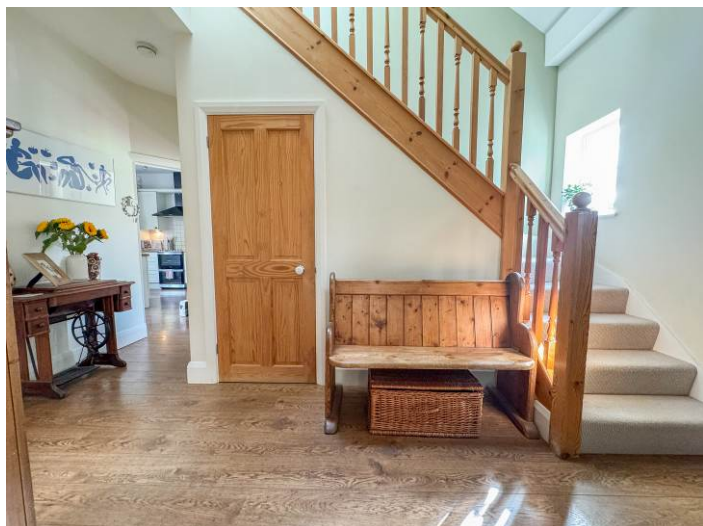


Accommodation comprises:

Entrance via hardwood entrance door to entrance hall.

SPACIOUS ENTRANCE HALL

Double glazed window to front aspect. Stairs to first floor accommodation with oak balustrade and large under stairs storage cupboard. Oak doors to all ground floor rooms. Radiator. Wood effect flooring. Plastered ceiling. Doors to study/bedroom four.



STUDY/BEDROOM FOUR 11' 1" x 7' (3.38m x 2.13m)

Double glazed window to front and side aspects. Radiator. Plastered ceiling.



LUXURY FITTED GROUND FLOOR SHOWER ROOM

Obscure double glazed window to side aspect. A three piece suite comprising tiled walk in shower cubicle with thermostatic shower and feature inset tiled shelving and waterfall shower head, wall hung wash hand basin with mixer tap and light oak vanity storage below and contrasting light oak cabinet with close coupled wc. Chrome heated towel radiator. Tiled flooring with under floor heating. Complimentary tiled walls. Plastered ceiling with inset LED spot lighting.



DINING ROOM 12' 4" x 12' 2" (3.76m x 3.71m)

Double glazed bi-folding doors providing access to rear garden. Large walk in storage cupboard. Radiator. Wood effect flooring. Coving to plastered ceiling. Open plan through to kitchen.



KITCHEN 14' 5" x 12' 10" (4.39m x 3.91m)

Double glazed window to rear aspect. A comprehensive range of country style base and eye level units incorporating oak work surface with inset stainless steel sink drainer unit. Space and plumbing for dishwasher. Space and housing for American style fridge freezer. Space for freestanding cooker with extractor above. Island unit with breakfast bar and further storage. Tiled splash backs. Wood effect flooring. Door to utility room.



UTILITY ROOM 8' 1" x 7' 3" (2.46m x 2.21m)

Double glazed window to rear aspect. Double glazed door providing access to rear garden. Country style base and eye level units incorporating oak work surface with butler sink. Space and plumbing for washing machine and tumble drier. Space for further integrated appliances. Tiled splash backs. Tiled flooring with under floor heating. Plastered ceiling.



LOUNGE 14' 4" into bay x 12' 10" (4.37m x 3.91m)

Feature double glazed bay window to front aspect. Feature fireplace with inset log burner and oak mantle. Radiator. Plastered ceiling.



FIRST FLOOR LANDING

Double glazed window to front aspect. Walk in storage cupboard.



MASTER BEDROOM 14' 1" x 10' 11" (4.29m x 3.33m)

Double glazed window to rear aspect. Radiator. Plastered ceiling. Door to dressing room.



DRESSING ROOM/STUDY AREA 12' x 5' 4" (3.66m x 1.63m)

Velux window to front aspect. Plastered ceiling.

BEDROOM TWO 10' 8" x 10' (3.25m x 3.05m)

Double glazed window to rear aspect. Built in storage cupboards to one wall. Radiator. Plastered ceiling.



BEDROOM THREE 11' 11" into bay x 11' 3" (3.63m x 3.43m)

Double glazed bay window to front aspect. Eaves storage to one side. Radiator. Plastered ceiling.



LUXURY FAMILY BATHROOM

Obscure double glazed window to rear aspect. A three piece suite comprising freestanding bath with floor mounted matt black mixer tap, circular table top wash hand basin with oak vanity unity and wall mounted matt black mixer tap and close coupled wc. Heated towel radiator. Plastered ceiling with inset spotlighting. Contemporary tiled flooring with under floor heating. Tongue and groove part panelled wall.



EXTERIOR.

The **UNOVERLOOKED REAR GARDEN** commences with composite decked area with steps down to garden. Beautifully laid to lawn with a selection of mature flower and shrub borders. Fencing to all boundaries.

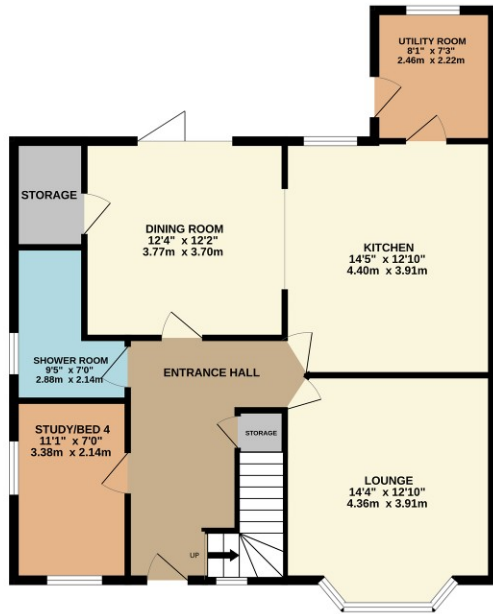


Part shingled area providing outdoor seating in front of **GARDEN CABIN** with power and lighting. Tile effect flooring. Inset spotlighting. Bar area. Gate providing access to front.

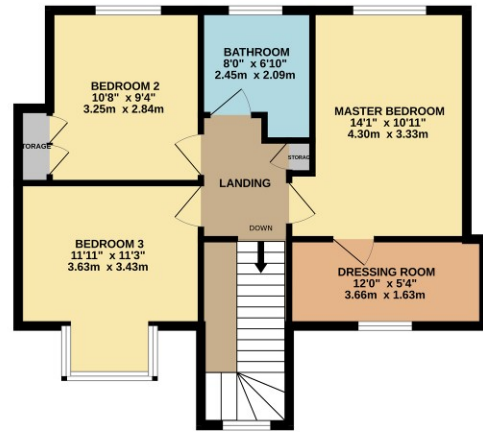


The **FRONT** has own shingled driveway providing off street parking for several vehicles. EV charging point. Lawn area.

GROUND FLOOR
870 sq.ft. (80.8 sq.m.) approx.



1ST FLOOR
582 sq.ft. (54.0 sq.m.) approx.



TOTAL FLOOR AREA: 1451 sq.ft. (134.8 sq.m.) approx.

Whilst every attempt has been made to ensure the accuracy of the floorplan contained here, measurements of doors, windows, rooms and any other items are approximate and no responsibility is taken for any error, omission or mis-statement. This plan is for illustrative purposes only and should be used as such by any prospective purchaser. The services, systems and appliances shown have not been tested and no guarantee is to their operability or efficiency can be given.

Made with Metropix ©2025

Consumer Protection from Unfair Trading Regulations 2008.

The Agent has not tested any apparatus, equipment, fixtures and fittings or services and so cannot verify that they are in working order or fit for the purpose. A Buyer is advised to obtain verification from their Solicitor or Surveyor. References to the Tenure of a Property are based on information supplied by the Seller. The Agent has not had sight of the title documents. A Buyer is advised to obtain verification from their Solicitor. Items shown in photographs are NOT included unless specifically mentioned within the sales particulars. They may however be available by separate negotiation. Buyers must check the availability of any property and make an appointment to view before embarking on any journey to see a property.