



Brook Terrace, offers over £120,000

- Modern 3 Bed Mid Terrace Property
- Parking / Garage
- Enclosed Rear Garden
- EPC Rating: D



 3  1  1



About the property

A well-presented three-bedroom mid-terrace property situated in the popular village of Tairgwaith. This ideal first-time buy or investment opportunity offers spacious accommodation, a generous rear garden, and easy access to local amenities and transport links.

The ground floor comprises a bright and airy lounge, a fitted kitchen with ample storage, and a downstairs wc. Upstairs features three well-proportioned bedrooms, suitable for a growing family or home office use, and a modern family bathroom.

Externally, the property benefits from an enclosed rear garden with views of the surrounding countryside—perfect for outdoor dining or relaxation.

The property also boasts parking to the rear, along with a large double garage, accessed via a small lane to the rear.



Accommodation

Hall 20' 3" x 20' 3" (6.17m x 6.17m)

5' 4" x 2' 6" (1.63m x 0.76m)

Lounge/Diner

25' 2" x 17' 1" (7.67m x 5.21m)

Kitchen

15' 3" x 8' (4.65m x 2.44m)

Landing

15' 6" x 10' 9" (4.72m x 3.28m)

Bedroom One

13' 2" x 10' 4" (4.01m x 3.15m)

Bedroom Two

11' 8" x 9' 1" (3.56m x 2.77m)

Bedroom Three

9' 3" x 6' 3" (2.82m x 1.91m)

Shower Room

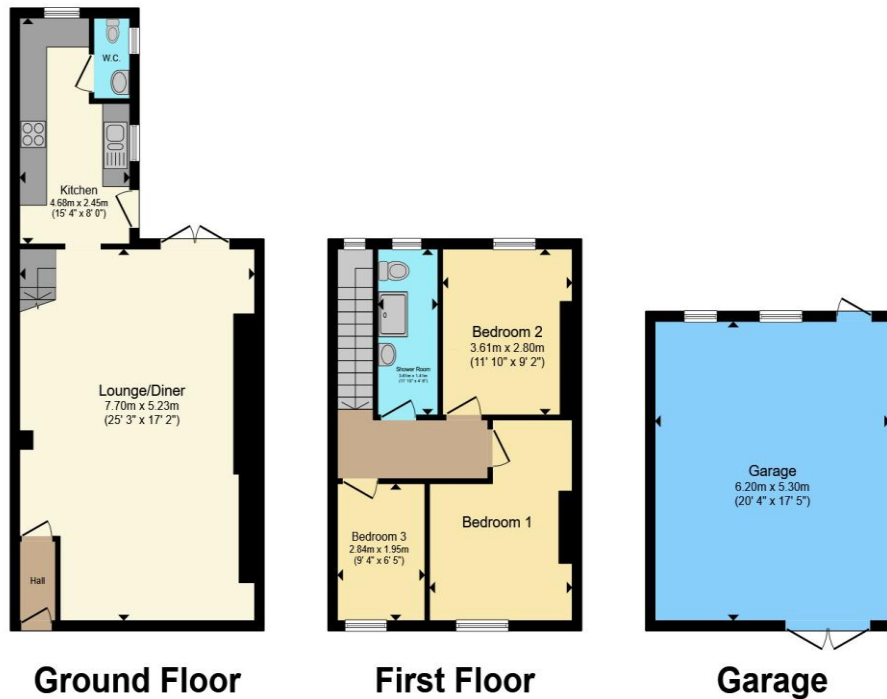
11' 8" x 4' 6" (3.56m x 1.37m)

Garage

01792 798201

morrison@peteralan.co.uk

Floorplan



Total floor area 124.7 m² (1,342 sq.ft.) approx

This floor plan is for illustrative purposes only. It is not drawn to scale. Any measurements, floor areas (including any total floor area), openings and orientation are approximate. No details are guaranteed, they cannot be relied upon for any purpose and they do not form part of any agreement. No liability is taken for any error, omission or misstatement. A party must rely upon its own inspection(s). Powered by www.propertybox.io



Important Information

Note while we endeavour to make our sales details accurate and reliable, if there is any point which is of particular interest to you, please contact the office and we will be pleased to confirm the position for you. We have not personally tested any apparatus, equipment, fixtures, fittings or services and cannot verify they are in working order or fit for their purposes. Nothing in these particulars is intended to indicate that carpets or curtains, furnishings or fittings, electrical goods (whether wired or not). Gas fires or light fittings or any other fixtures not expressly included form part of the property offered for sale. This computer generated Floorplan, if applicable, is intended as a general guide to the layout and design of the property. It is not to scale and should not be relied upon for dimensions. Tenure: We cannot confirm the tenure of the property as we have not had access to the legal documents. The buyer is advised to obtain verification from their solicitor or surveyor.

Peter Alan Limited is registered in England and Wales under company number 2073153. Registered Office is Cumbria House, 16-20 Hockliffe Street, Leighton Buzzard, Bedfordshire, LU7 1GN. VAT Registration Number is 500 2481 05. For activities relating to regulated mortgages and non-investment insurance contracts, Peter Alan Limited is an appointed representative of Connells Limited which is authorised and regulated by the Financial Conduct Authority. Connells Limited's Financial Services Register number is 302221. Most buy-to-let

