



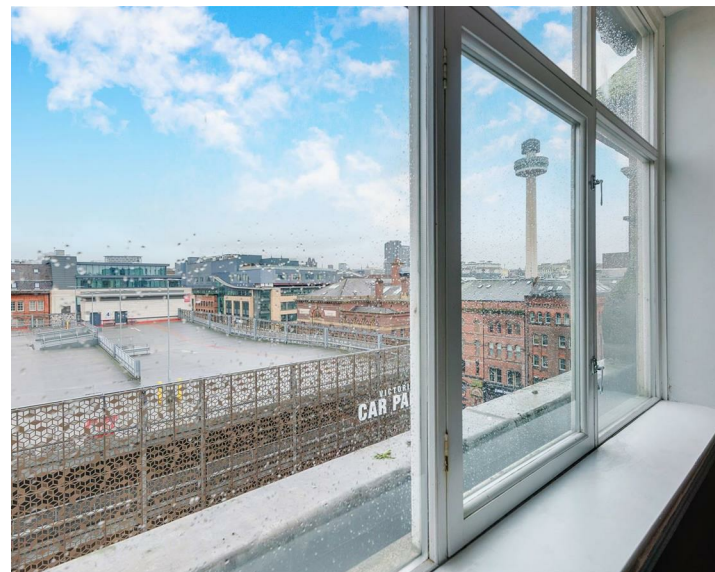
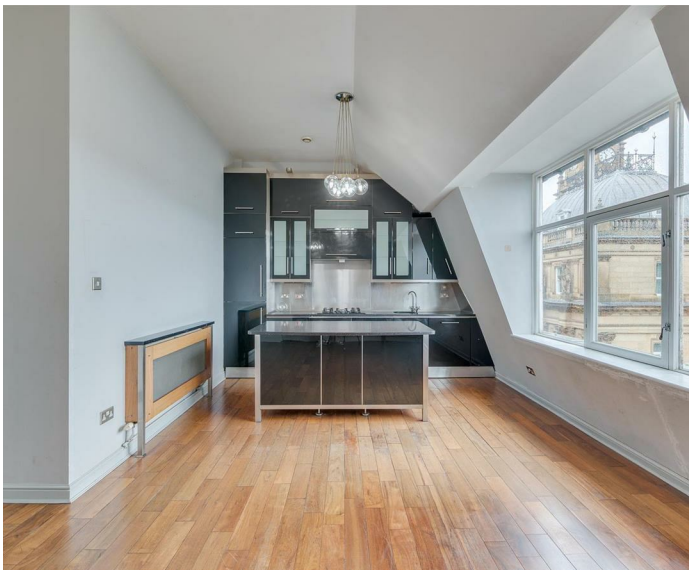
Apartment 14 22 Sir Thomas Street, Liverpool , L1 6BB
£150,000

This charming Three bedroom penthouse is set within a beautiful listed building in the heart of the city. Bursting with character, the property features large windows that flood the open plan living space with natural light, creating a bright and welcoming atmosphere.

The spacious living and kitchen area is thoughtfully designed for both everyday living and entertaining. The apartment further benefits from three well proportioned bedrooms, one of which features an en suite, in addition to a separate family bathroom

Suitable for both owner occupiers and investors, this property is an ideal choice for those looking to embrace city living. Positioned just moments from Moorfields and Lime Street train stations, as well as a wealth of dining, shopping, and cultural amenities, the property offers the ultimate in city living with everything on your doorstep.

Leasehold
 150 year lease from 2003
 Service charge £2000 per annum
 Ground rent £100 per annum
 Council tax band C
 Available with no onwads chain



Energy Efficiency Rating		Current	Potential
Very energy efficient - lower running costs			
(92 plus) A			
(81-91) B			
(69-80) C			
(55-68) D			
(39-54) E			
(21-38) F			
(1-20) G			
Not energy efficient - higher running costs			
England & Wales	EU Directive 2002/91/EC	75	

Environmental Impact (CO ₂) Rating		Current	Potential
Very environmentally friendly - lower CO ₂ emissions			
(92 plus) A			
(81-91) B			
(69-80) C			
(55-68) D			
(39-54) E			
(21-38) F			
(1-20) G			
Not environmentally friendly - higher CO ₂ emissions			
England & Wales	EU Directive 2002/91/EC		

116 Duke Street, Liverpool, Merseyside, L1 5JW
 Tel: 0151 709 9638
 sales@bluerowhomes.co.uk
 www.bluerowlettings.com

bluerow
 SALES | LETTINGS | INVESTMENTS