



 4  3  3

Cwrt Cerryg, Lower Machen Newport

offers over £850,000

 peter
alan

02920 867611
caerphilly@peteralan.co.uk



About the property

A rare and exceptional opportunity to acquire Cwrt Ceryg, a beautifully restored stone-built former stable barn with historic connections to the prestigious Tredegar House estate in Newport. It is incredibly rare to find a property that so effortlessly combines rich heritage and character with the charm and practicality of a stunning family home.

Nestled in the peaceful countryside hamlet of Lower Machen, this Grade II Listed barn conversion has been thoughtfully and meticulously renovated, retaining a wealth of original and restored features that create a warm and inviting atmosphere. Situated within a private lane shared by just two other homes in the highly sought-after Lower Machen hamlet, a designated conservation area home to only 19 listed and character properties. Offering both tranquility and convenience, this idyllic location sits on the western edge of the City of Newport.

For families, the property is within the catchment area of Pentrepoeth Primary School and Bassaleg Secondary School, both of which are highly regarded for their excellent educational standards. Commuters will also appreciate the superb connectivity, with Junction 28 of the M4 just five miles away, Cardiff within 16 miles, Bristol 38 miles, and Newport a short eight-mile drive. Additionally, Newport's mainline railway station provides direct services to London Paddington in just two hours, making this an ideal home for those seeking both

Accommodation

Summary

A rare and exceptional opportunity to acquire Cwrt Ceryg, a beautifully restored stone-built former stable barn with historic ties to the prestigious Tredegar House estate in Newport. It is exceptionally uncommon to find a property that blends such rich heritage and character with the charm and practicality of a superb family home.

The layout has been thoughtfully designed, with a central reception hall dividing the accommodation into living and sleeping quarters. One side of the property comprises four generously sized double bedrooms and three bathrooms, while the other side features three character-filled reception rooms, a refitted modern kitchen, and a utility room. The home is arranged around a central courtyard, creating an elegant horseshoe configuration that offers both privacy and a strong sense of cohesion between the internal and external spaces.

Situated in the peaceful countryside hamlet of Lower Machen, this Grade II Listed barn conversion has been meticulously renovated, preserving a wealth of original and restored features that lend warmth, charm, and authenticity throughout. Tucked away on a private lane shared by only two other properties, the home sits within a designated conservation area comprising just 19 listed and character properties, offering a unique level of exclusivity and tranquillity while remaining accessible.

The property falls within the catchment area of Pentrepoeth Primary School and Bassaleg Secondary School, both highly regarded for their academic excellence.





Its location also provides excellent connectivity, with Junction 28 of the M4 just five miles away, Cardiff within 16 miles, Bristol 38 miles, and Newport a mere eight-mile drive. Newport's mainline railway station offers direct services to London Paddington in approximately two hours, making Cwrt Ceryg an ideal choice for those seeking a balance of peaceful rural living and convenient transport links.

Hallway

Step through a grand hardwood door into an impressive entrance hall, featuring elegant flagstone flooring and striking vaulted ceilings. Expansive French doors and a large window at the rear offer picturesque views of the central courtyard while providing seamless access to the outdoor space. A radiator ensures warmth and comfort within this stunning architectural setting.

Living Room

24' x 16' (7.32m x 4.88m)
 Accessed through double doors, this inviting space features a striking cast iron wood burner set within a beautifully crafted stone surround, complete with a flagstone hearth and an exposed wooden mantel. The impressive vaulted ceiling, adorned with exposed beams, enhances the room's character and sense of space. Windows to the front and side allow for ample



natural light, while central heating radiators ensure warmth and comfort. A door leads through to the dining room.

Dining Room

17' 10" x 12' 1" (5.44m x 3.68m)
 A light and airy room with French doors leading onto central courtyard. Windows to side elevation. Radiator. Feature vaulted ceiling. Door to family room.

Family Room

24' 9" x 11' 9" (7.54m x 3.58m)
 Two sets of elegant French doors open onto the central courtyard, seamlessly blending indoor and outdoor spaces. A charming open fire, set within a stone surround with a flagstone hearth, serves as a striking focal point. A side window allows additional natural light to filter in, complementing the room's spacious feel. The vaulted ceiling enhances the sense of grandeur, while tiled flooring and central heating radiators provide both style and comfort.

Kitchen

12' 2" x 12' 11" (3.71m x 3.94m)
 This beautifully refitted modern kitchen is thoughtfully designed and finished to a high standard, featuring a comprehensive range of wall and base units



complemented by sleek granite work surfaces and an inset sink. High-quality integrated appliances include a built-in oven, hob, and extractor, as well as a dishwasher and a wine cooler, offering both functionality and convenience. The vaulted ceiling with exposed beams adds a striking sense of space and character, while the flooring provides a stylish and practical finish. Windows to the side and rear flood the room with natural light, and a door provides access to the adjoining utility room.

Utility Room

8' 1" x 7' 6" (2.46m x 2.29m)
 Fitted with base units with integrated Belfast sink. Ceramic tiled flooring. Window to the side elevation. Plumbing for washing machine. Door to boiler room and stable door leading to the courtyard.

Cloakroom/Wc

Comprising a close coupled WC and wash hand basin with tiled splash back. Ceramic tiled flooring.

Inner Hallway

Doors to bedrooms and bathroom. Window. Radiator.

Bedroom One

20' 8" x 12' 3" (6.30m x 3.73m)



Well proportioned room with feature vaulted ceiling and exposed beams. Radiator. Window to side. Door giving access to main courtyard area. Fitted wardrobes. Door to ensuite.

Ensuite Bathroom

7' 11" x 7' 5" (2.41m x 2.26m)

Comprising pedestal wash hand basin, close coupled WC, bidet and bath with mixer taps and shower attachment. Part tiled walls. Shelving. Radiator..

Bedroom Two

11' 10" x 14' 2" (3.61m x 4.32m)

Feature vaulted ceiling and exposed beams. Window to front and side elevations.. Door to ensuite.

Ensuite

Comprising close coupled WC, pedestal wash hand basin and shower cubicle. Radiator. Visibly fully tiled walls.

Bedroom Three

8' 1" x 14' 7" (2.46m x 4.45m)

Feature exposed beams. Glazed door and window to courtyard. Radiator. Dado rail.



Bedroom Four

11' 11" x 8' 2" (3.63m x 2.49m)

Feature exposed beams and inset spotlights to ceiling. Window to courtyard. Radiator.

Family Bathroom

Comprising a close coupled WC, pedestal wash hand basin, shower cubicle and bath. Heated towel rail. Window to courtyard.

Outside

Exterior Grounds

Front of the Property

At the front of the property, a spacious patio seating area, beautifully laid with flagstones, is enclosed by elegant wrought iron gates and a characterful stone wall. A dwarf wall encircles a neatly lawned area, where patio steps lead to a charming seating area overlooking a natural pond. Further steps ascend to an additional lawned garden, elevated to provide picturesque views over the property, surrounded by mature trees. Additional steps lead to the side, granting access to the garden room/office.



Garden Room/Office

Constructed from stone and accessed via solid wooden doors, the garden room/office is a characterful space with exposed beams and vaulted ceilings. A front-facing window frames delightful views over the property and surrounding countryside, making this a versatile and tranquil retreat.

Side of the Property

To the side, a garden area features expansive flagstone flooring. Currently housing three wooden sheds, this space offers potential for transformation into a secluded private seating area.

Rear of the Property

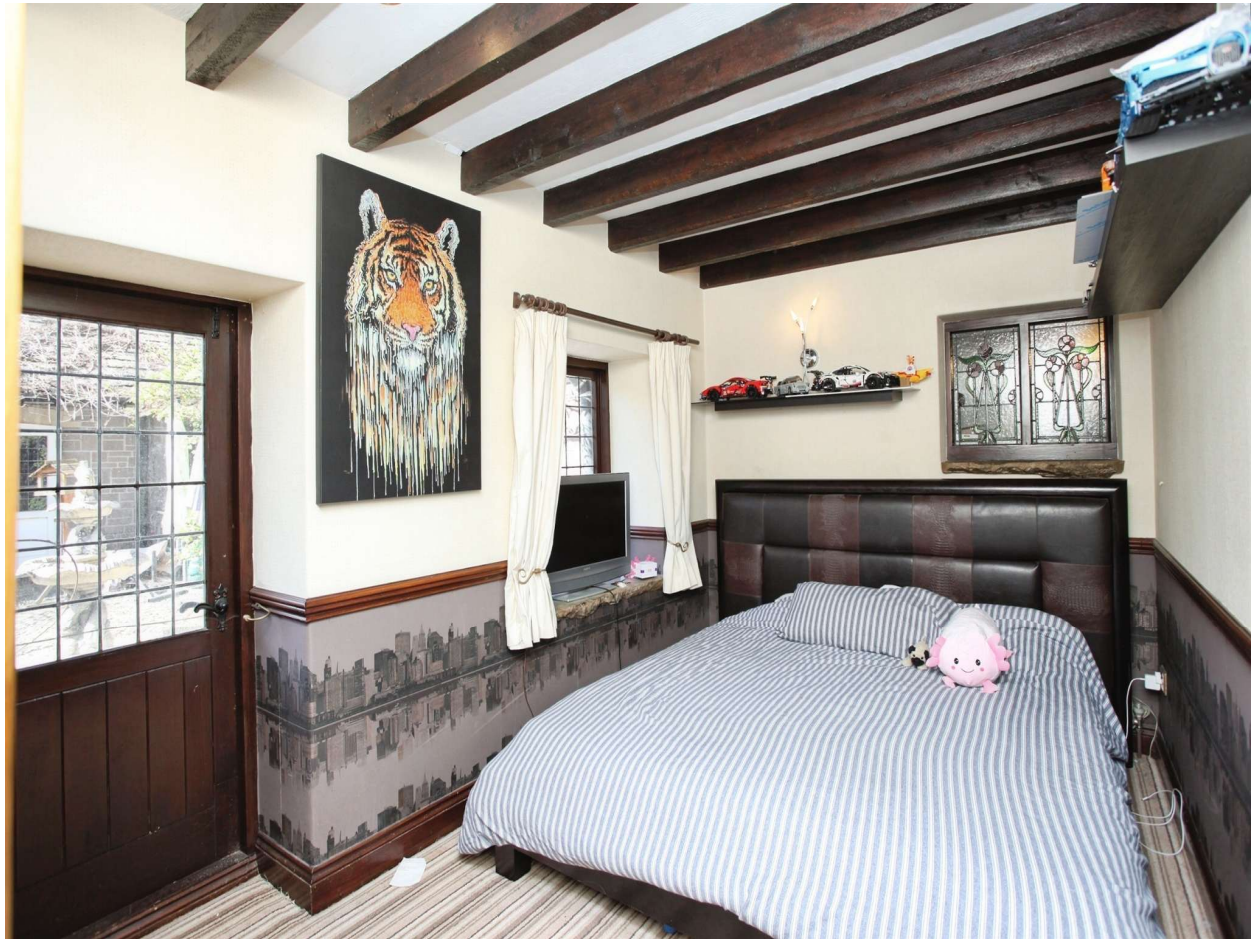
To the rear, a generous cobblestone area provides ample parking for multiple vehicles. Large double gates open into the enclosed courtyard.

Enclosed Courtyard

The enclosed courtyard boasts a charming cobblestone floor and an outdoor shower- previously a practical feature when a hot tub was situated here. Mature trees and cascading wisteria flourish in in-ground planters, adding natural beauty to this fantastic entertaining



space. With multiple access points leading into the property, the courtyard seamlessly blends functionality with charm, making it ideal for gatherings and relaxation.



02920 867611

caerphilly@peteralan.co.uk



This floor plan is for illustrative purposes only. It is not drawn to scale. Any measurements, floor areas (including any total floor area), openings and orientation are approximate. No details are guaranteed, they cannot be relied upon for any purpose and they do not form part of any agreement. No liability is taken for any error, omission or misstatement. A party must rely upon its own inspection(s). Powered by www.focalagent.com

Important Information

Note while we endeavour to make our sales details accurate and reliable, if there is any point which is of particular interest to you, please contact the office and we will be pleased to confirm the position for you. We have not personally tested any apparatus, equipment, fixtures, fittings or services and cannot verify they are in working order or fit for their purposes. Nothing in these particulars is intended to indicate that carpets or curtains, furnishings or fittings, electrical goods (whether wired or not). Gas fires or light fittings or any other fixtures not expressly included form part of the property offered for sale. This computer generated Floorplan, if applicable, is intended as a general guide to the layout and design of the property. It is not to scale and should not be relied upon for dimensions. Tenure: We cannot confirm the tenure of the property as we have not had access to the legal documents. The buyer is advised to obtain verification from their solicitor or surveyor.

Peter Alan Limited is registered in England and Wales under company number 2073153, Registered Office is Cumbria House, 16-20 Hockliffe Street, Leighton Buzzard, Bedfordshire, LU7 1GN. VAT Registration Number is 500 2481 05. For activities relating to regulated mortgages and non-investment insurance contracts, Peter Alan Limited is an appointed representative of Connells Limited which is authorised and regulated by the Financial Conduct Authority. Connells Limited's Financial Services Register number is 302221. Most buy-to-let mortgages are not regulated.

