

Agents Note: Whilst every care has been taken to prepare these sales particulars, they are for guidance purposes only. All measurements are approximate and for general guidance purposes only and whilst every care has been taken to ensure their accuracy, they should not be relied upon and potential buyers are advised to recheck the measurements.

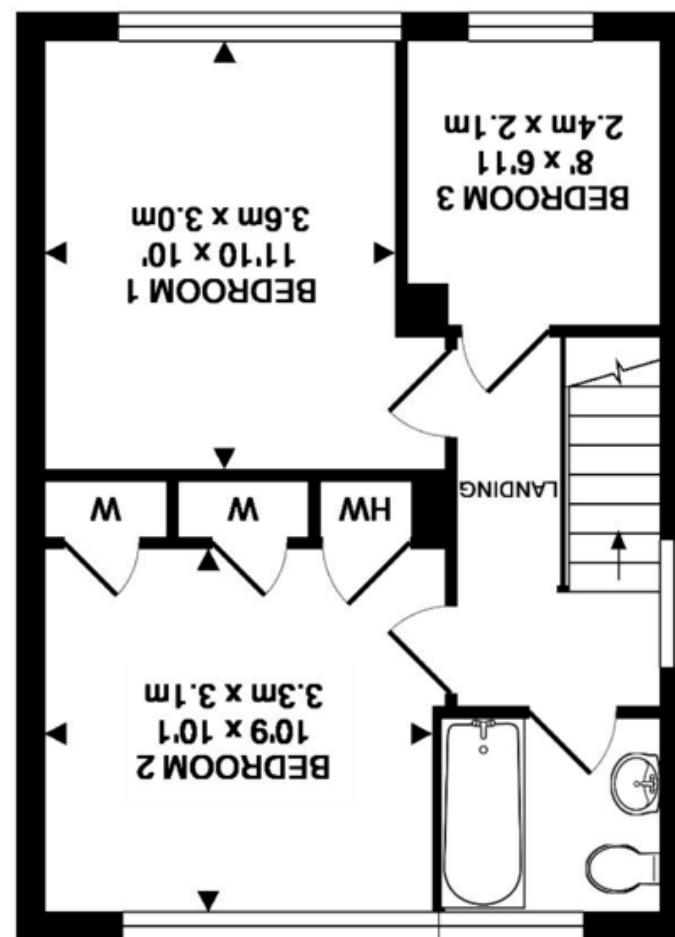
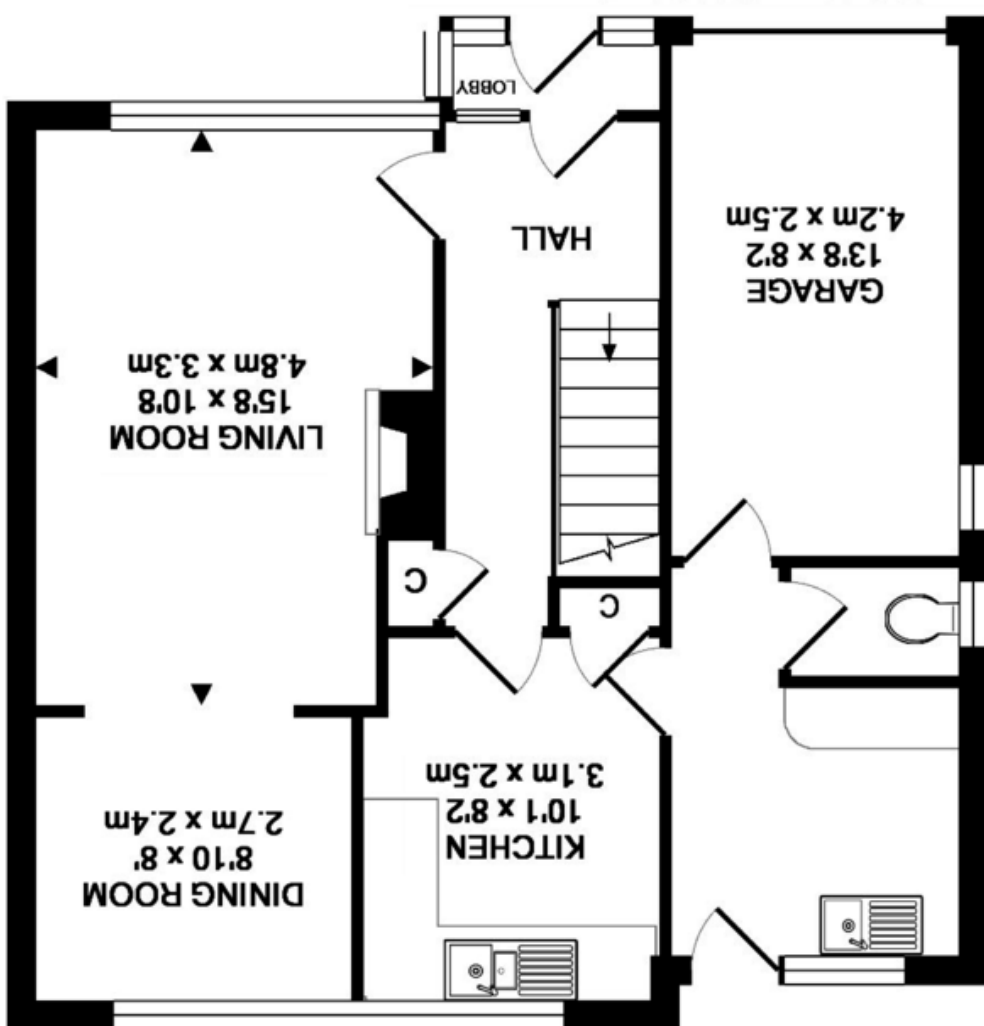
1ST FLOOR
APPROX. FLOOR
AREA 399 SQ.FT.
(37.1 SQ.M.)



TOTAL APPROX. FLOOR AREA 1016 SQ.FT. (94.4 SQ.M.)

GROUND FLOOR
APPROX. FLOOR
AREA 617 SQ.FT.
(57.3 SQ.M.)

The floor plan is provided in good faith and believed to be accurate, but location and sizes of rooms, doors and windows are provided for guidance only and as such should not be relied upon. If any aspect of the plan is important to you, please contact our office.
Made with Metropix ©2018



27 Tellcroft Close, Corsham, Wiltshire, SN13 9JH

27 Tellcroft Close, Corsham, Wiltshire, SN13 9JH

- Three bedroom semi detached house
- Utility room
- Open outlook to the rear over fields
- Popular location
- NO ONWARD CHAIN
- UPVC double glazing and gas central heating
- Scope to update and extend (Subject to the necessary consents)
- Garage and driveway parking

OIEO £250,000

Situation and Description

A 1960's built semi detached house which enjoys an enviable position within an established development with fields to the rear. The property would benefit from some updating but does offer uPVC double glazing, gas central heating and NO ONWARD CHAIN.

The accommodation on offer comprises entrance porch, hall, open plan sitting room and dining room, kitchen, utility room, cloakroom, two double bedrooms, one single bedroom and a bathroom.

Outside

Front
Easily maintainable garden with gravelled areas and path leading to the rear.

Rear

Good sized, predominately lawned garden which is private, well enclosed and enjoys a lovely outlook over the field to the rear.

Garage

Attached single unit with up and over door to the front and personal door to utility room. Driveway parking in front for one car.

Corsham offers an excellent range of amenities including the primary schools, secondary school, sports centre, library, arts centre and cricket club. The picturesque high street with its variety of interesting shops, cafes, public houses and Corsham Court with its lovely grounds is also within easy access.



Directions

From the Co-Op car park, turn left onto Newlands Road. At the mini-roundabout turn left onto B3353 Pickwick Road. At the next mini-roundabout turn right onto Pound Pill. Continue over the next mini-roundabout and then turn right onto Lypiatt Road. Take the third turning on the right onto Tellcroft Close where the property can be found on the left hand side.