

stuart
thomas



- STUNNING KITCHEN/FAMILY ROOM
- ELEGANT LIVING ROOM
- IMPRESSIVE ENTRANCE HALL
- DRESSING ROOM

5 High Road, Hockley, SS5 4SY

£750,000

Guide Price £750,000 to £760,000 STUNNING CHARACTER PROPERTY offering SUPERB ACCOMMODATION which cleverly combines a mix of contemporary and conventional living. IMPRESSIVE ENTRANCE HALL, useful cloakroom, ELEGANT LIVING ROOM and enormous KITCHEN/FAMILY ROOM with a WOOD BURNER dressing room and more



Property Description

IMPRESSIVE ENTRANCE HALL

The entrance door with a lead light stained glass inset leads to the spacious entrance hall. Window to the front. Arched stained glass window to the side. Wood effect flooring. Built in cupboard. Coving. Stairs to the first floor with a cupboard under.

CLOAKROOM

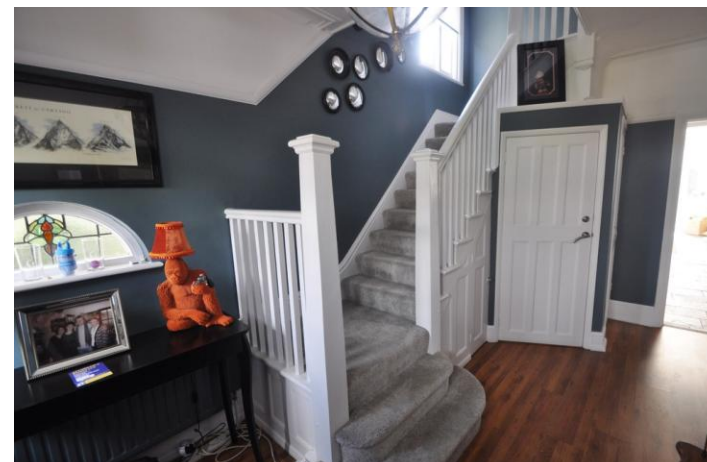
Attractively decorated with a mix of wallpaper and ceramic tiling. Low level wc and a circular wash hand basin with a mixer tap over. Obscure double glazed window to the side. Heated towel rail. Tiled floor.

LIVING ROOM

26' 3" x 16' 3 MAX" (8m x 4.95m) This very elegant and superbly decorated room has a double glazed turreted window to the front with stained glass fanlights over. Feature panel effect wallpaper. Coving. Arched window to the front. Two radiators. Door to kitchen and hallway.

KITCHEN/FAMILY ROOM

28' 7" x 22' 2 max" (8.71m x 6.76m) This magnificent room at the rear of the property combines a SECOND LIVING SPACE, the SUPERBLY FITTED KITCHEN and CONSERVATORY AREA with WOOD BURNING STOVE. The kitchen is fitted with a range of units at eye and base level with ample granite work surfaces over. Large feature CENTRAL ISLAND UNIT with an inset 5 ring gas hob. Built in oven and microwave. One and a half bowl sink unit with a mixer tap over and feature hot tap. Integrated dishwasher. Slate flooring. Extractor cooker hood. Feature wood burning stove. Double glazed window to the rear. Window to the side. Feature fire surround. Double glazed French doors lead to the rear garden. Two radiators one with a radiator cover.





STUDY

10' 6" x 9' 4" (3.2m x 2.84m) This good size room has double glazed windows to the rear and side. Coving. Radiator. Slate floor.

UTILITY ROOM

10' 5" x 9' 6" (3.18m x 2.9m) With a range of units at eye and base level with ample work surfaces over. Single drainer stainless steel sink unit with a mixer tap over. Velux window. Slate floor. Doors lead to the garage and study. Coving. Window to the side. Feature radiator.



BEDROOM ONE

17' 9" x 12' 1 max" (5.41m x 3.68m) This beautiful room has a turreted double glazed window with stained glass fanlights and a built in upholstered headboard. Further arched window to the front. Radiator. Coving. Doors leads to the en suite and dressing room.

EN SUITE

3 piece white suite comprises a double shower cubicle, wash hand basin with a mixer tap and a low level wc with a concealed cistern. Extractor fan. Fully tiled to all visible walls and floor.

DRESSING ROOM

8' 1" x 8' (2.46m x 2.44m) This useful room off the master bedroom also has access from the landing. Double glazed bay window to the front. Double radiator. Access to eaves storage.

BEDROOM TWO

16' 7" x 14' 6" (5.05m x 4.42m) Double glazed French doors lead to the SOUTH WEST FACING SUN BALCONY. Coving.



Double radiator.

BEDROOM THREE

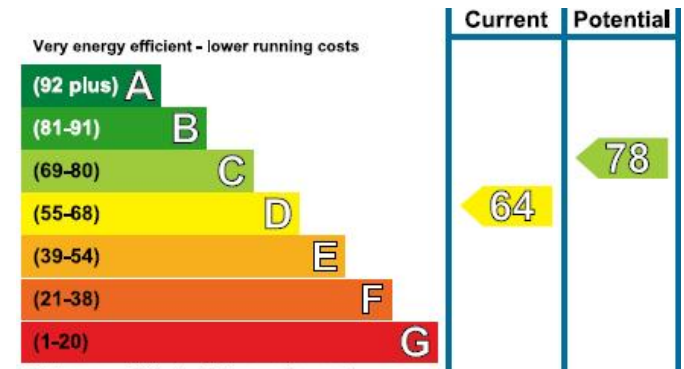
13' 8" x 12' 11" (4.17m x 3.94m) Double glazed windows to the rear and side. Radiator. Coving. Feature wallpaper décor.

BEDROOM FOUR (TOP FLOOR)

20' x 17' 3" (6.1m x 5.26m) This spacious room at the top of the house could make either a Master Bedroom or Teenage Suite. Double glazed window to the front. Skylight windows to either side. Double radiator. Door leads to the :-

EN SUITE

Skylight window. Low level wc wash hand basin and shower cubicle. Electric shaver socket. Fully tiled to all visible walls and floor. Radiator.



294 Kiln Road, Benfleet, Essex,
SS7 1QT

stestates.co.uk
01702 558110
info@stestates.co.uk

Agents Note: Whilst every care has been taken to prepare these sales particulars, they are for guidance purposes only. All measurements are approximate and for general guidance purposes only and whilst every care has been taken to ensure their accuracy, they should not be relied upon and potential buyers are advised to recheck the measurements