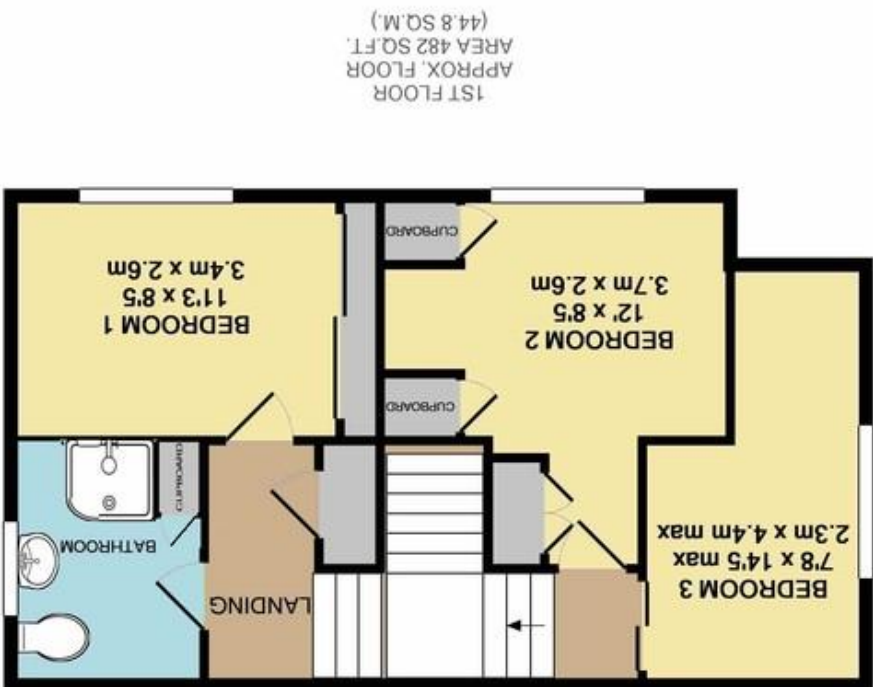


Agents Note: Whilst every care has been taken to prepare these sales particulars, they are for guidance purposes only. All measurements are approximate and for general guidance purposes only and whilst every care has been taken to ensure their accuracy, they should not be relied upon and potential buyers are advised to recheck the measurements

21 CRESSWELLS, CORSHAM, WILTSHIRE, SN13 9NJ
TOTAL APPROX. FLOOR AREA 1119 SQ.FT. (104.0 SQ.M.)
Made with Metopix ©2017
Schematic Diagram only - Not to scale

GROUND FLOOR
APPROX. FLOOR
AREA 637 SQ.FT.
(59.2 SQ.M.)

1ST FLOOR
APPROX. FLOOR
AREA 482 SQ.FT.
(44.8 SQ.M.)



21 Cresswells, Corsham, Wiltshire, SN13 9NJ

- Three bedroom end of terrace
- Superb open plan kitchen/diner with modern units
- Cloakroom
- Open outlook to the front
- Spacious sitting room
- Conservatory addition
- Garage and off street parking
- Generous gardens to both sides

Offers in Excess of £250,000

Situation and Description

A light and well presented end of terrace house with generous gardens and garage which is situated on a popular road within walking distance of schools and amenities. NO ONWARD CHAIN

The property offers accommodation comprising entrance porch, hall with cloakroom off, spacious sitting room, open plan kitchen and dining room with modern units, conservatory opening onto the rear garden, two double bedrooms, one single bedroom and a shower room (formerly a bathroom).

Externally there are good sized, predominately lawned gardens to both sides of the property with paved patio seating area, shrub beds and ornamental bushes.

Garage

Single unit with up and over door, power and parking space in front. The garage is situated just below the property and can be accessed via a path leading down from the garden.

Cresswells is a popular cul de sac which was built in the 1970's and is situated within easy walking distance of the local schools, and community campus incorporating the swimming pool, library, cafe and other leisure facilities. The picturesque high street is only a short walk further on and bus services to bath and Chippenham pick up close by on the Valley road.

EPC Rating - D



Directions

From our office on the High Street turn right into the Pickwick Road, proceed over the first mini roundabout and at the second mini roundabout turn left into Valley Road. Take the second left turning into Cresswells, where the property can be found on the left hand side.