



Bromefield

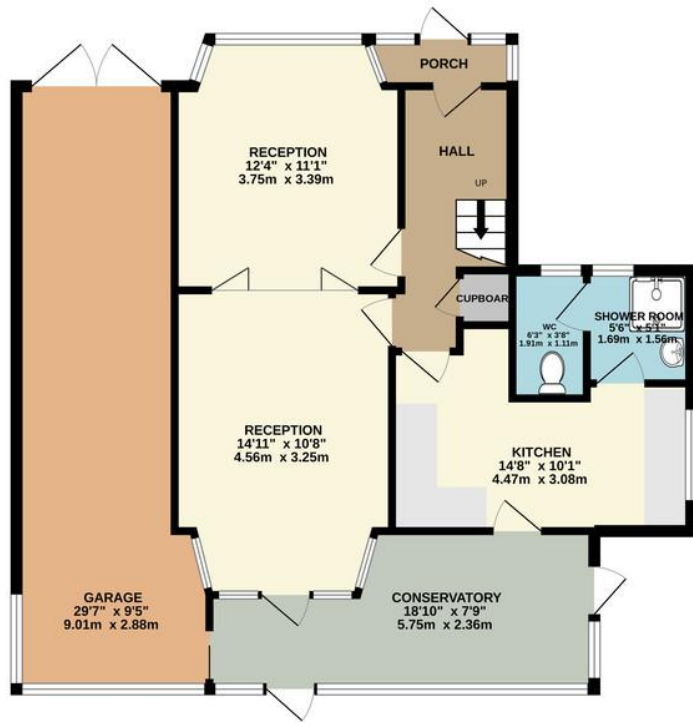
Stanmore, HA7 1AE

£825,000

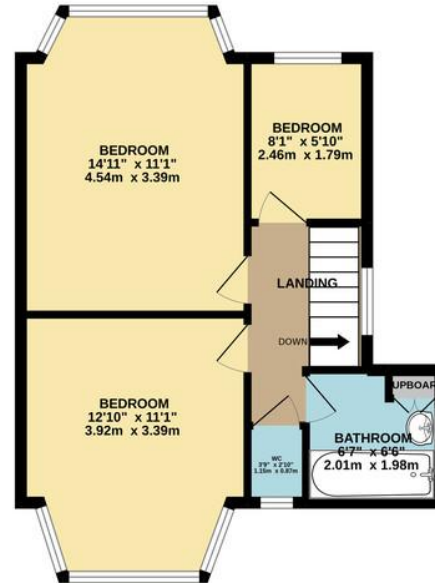
A CHAIN FREE, extended, three bedroom, detached house, situated on a wide plot, suitable for further extensions to either side of the house (subject to planning permission). This property requires modernisation and decoration and is located close to Park High, Whitchurch, Avanti and Stanburn schools, Centenary Park and Canons Park station. EPC Rating: Awaited.



GROUND FLOOR
897 sq.ft. (83.3 sq.m.) approx.



1ST FLOOR
443 sq.ft. (41.1 sq.m.) approx.



TOTAL FLOOR AREA: 1340 sq.ft. (124.5 sq.m.) approx.

Whilst every attempt has been made to ensure the accuracy of the floorplan contained here, measurements of doors, windows, rooms and any other items are approximate and no responsibility is taken for any error, omission or mis-statement. This plan is for illustrative purposes only and should be used as such by any prospective purchaser. The services, systems and appliances shown have not been tested and no guarantee as to their operability or efficiency can be given.
Made with Metropix ©2022



EPC Rating: Awaited

Belmont Circle Office
506 Kenton Lane
Harrow
Middlesex
HA3 8RD

www.blacklarsestateagents.co.uk
0208 907 7701
sales@blacklarsestates.co.uk

Agents Note: Whilst every care has been taken to prepare these particulars, they are for guidance purposes only. All measurements are approximate and for general guidance purposes only and whilst every care has been taken to ensure their accuracy, they should not be relied upon and potential buyers/tenants are advised to recheck the measurements