

**Head Office:**  
Dixon Kelley Estate Agents  
1 Penn Court  
Station Road, West Moors  
Dorset. BH22 0JJ

# DORSET PARK HOMES

**DRAFT**

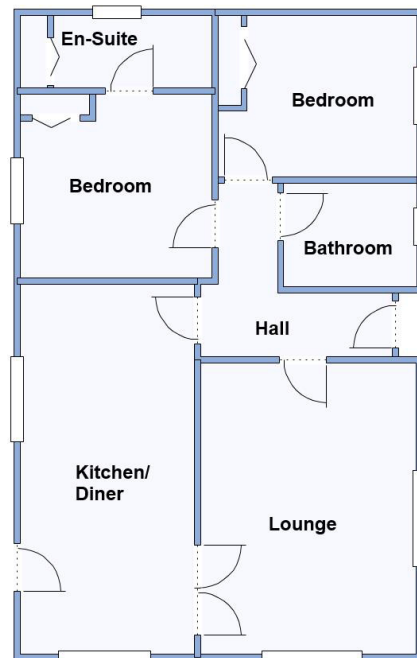
[www.dorsetparkhomes.com](http://www.dorsetparkhomes.com)

**Telephone: 01202 877511**

**3a Stour Park, New Road, Bournemouth, Dorset. BH10 7DE**



## En-Suite Shower Room & Bathroom



This drawing has been prepared for diagrammatic purpose only. Not to scale

**2 Bedroom Park Home approx 35' x 22'**

**Accommodation & approximate room dimensions:**

- Prestige 'Reprise' Park Home 2019
- Entrance Hall: Hatch to roof space.
- Lounge: approx 15'4" x 11'4". Feature fireplace.
- Kitchen/Diner: approx 19'6" x 9'2". Range of base & wall units. Built-in oven, hob & cooker hood. Integrated washing machine, fridge/freezer & dishwasher. Cupboard housing combination gas boiler. Ample space for dining suite. Door to garden.
- Bedroom 1: approx 10'2" x 9'8". Fitted wardrobe & dresser unit.
- En-Suite Shower Room with large storage cupboard. Shower cubicle, Vanity wash basin & WC.
- Bedroom 2: approx 10'2" x 8'4". Fitted wardrobe.
- Bathroom: Panelled bath. Vanity wash basin & WC.
- Gas Central Heating & PVCu Double-Glazing
- Paved Driveway & GARAGE with power & light.
- Small Private Garden.
- Age restriction 60+. No Pets
- Well maintained Residential Park close to amenities & with easy access to Bournemouth & Poole.
- No Chain!

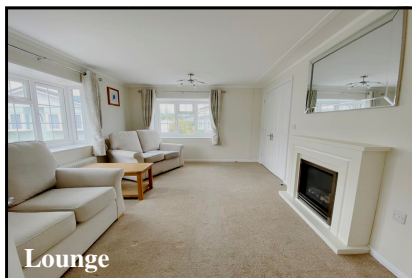
## Good location close to amenities



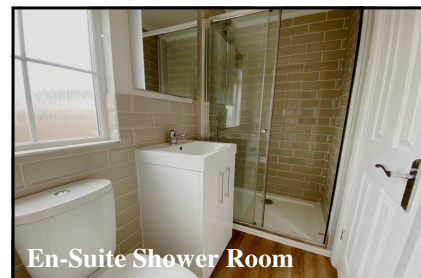
Superb Kitchen



19' Kitchen/Diner



Lounge



En-Suite Shower Room

**Pitch Fee: Approx £225.95 per month plus £9 Water per month**  
**Subject to Annual Review**  
**Council Tax Band: 'A'**      **Tenure: 1983 Mobile Homes Act Agreement**

**Price £225,000**

**VIEWING STRICTLY BY APPOINTMENT WITH THE VENDOR'S AGENT Dorset Park Homes 01202 877511**

**IMPORTANT NOTE:** These particulars are believed to be correct but their accuracy is not guaranteed. They do not form part of any contract. Nothing in these particulars shall be deemed to be a statement that the property is in good structural condition or otherwise, nor that any of the services, appliances, equipment or facilities are in good working order or have been tested. Purchasers should satisfy themselves on such matters prior to purchase Ref.W04801

*The recommended specialist in Park Home sales*  
Proprietor: Simon Dixon

