



HAMBLETON
ESTATE AGENTS

3 SILVER STREET
WINCANTON
BA9 9AN



£375,000

3 Silver Street, Wincanton, Somerset, BA9 9AN.

An impressive four-bedroom period townhouse, ideally located in the heart of Wincanton and within easy reach of local amenities.

The property boasts particularly spacious and versatile accommodation arranged over three floors, offering generous living space.

The sitting room retains much of the home's original character, featuring an attractive fireplace with a wood-burning stove, while the dining room offers a cosy open fire with alcove displays. A long hallway leads to the garden and opens into a modern fitted kitchen with integrated oven and microwave, flowing through to a utility/boot room with cloakroom. Beyond this is a garden/games room, currently used as a "man cave".

The first floor provides three bedrooms, two generous doubles, along with a large family shower room. The second floor offers two further bedrooms and a bathroom. Outside, the rear garden features a paved seating area and lawn, with work underway to create off-road parking.

While some maintenance is required, this is a rare opportunity to acquire an imposing period home in a central location offering spacious and versatile accommodation.

LOCATION: The town of Wincanton is an appealing South Somerset town bordering the counties of Dorset and Wiltshire. Local amenities including a Co-Op supermarket, butcher, bakery, fruit and veg and whole foods shop, Morrisons, Lidl, Health Centre, Post Office, library, antique shops, cafes, eateries, the Bootmakers Workshop with crafts for both children and adults with a wood-fired pizza and a leisure centre with gym and swimming pool. The town has a thriving community with an active library as well as a community centre at the Balsam Centre which has a busy schedule of classes and groups. The town is a 10 minute drive from the fantastic offerings of Bruton including the Hauser & Wirth Art Gallery and Roth Bar & Grill, 10 minutes from the impressive highly-regarded Newt Hotel, 15 minutes from the pretty market town of Castle Cary and 20 minutes from the attractive Dorset town of Sherborne. It is also close to the A303 for an easy drive to/from London (approx 2 hours drive) and Berry's coaches which operates a twice daily service to London. Other local attractions are a number of National Trust properties including Stourhead and approximately an hour's drive from the beautiful Dorset coastline featuring some of the best beaches in the country. There is a Waitrose 10 minutes away in Gillingham or at Sherborne and an excellent local farm shop and restaurant at Kimbers (5 minutes away). There is also the renowned Wincanton racecourse and a pretty local park, Cale Park, which features a playground, café with 'mini-town' for children and the pretty river Cale which runs through to the countryside behind Loxton House.

ACCOMMODATION GROUND FLOOR

Original front door to:

ENTRANCE VESTIBULE: Dado rail, hooks and shelving for coats and boots and door to:

ENTRANCE HALL: A long hallway with dado rail, two understairs cupboards, radiator and door to garden.

SITTING ROOM: 12'10" x 12'5" An attractive fireplace with a large brick opening with fitted wood burning stove and painted timber mantle, fireside cabinets, sash window to rear aspect and Victorian style radiator.

DINING ROOM: 14' x 12'10" Feature cast iron fireplace with timber surround and mantle, fireside alcoves with fitted shelving, exposed floorboards, secondary double glazed window to front aspect and radiator.

KITCHEN: 10'6" x 9'5" A modern stylish kitchen with inset stainless steel sink unit with cupboard below, further range of gloss fronted tower and base units topped with a work surface, fitted shelving, integrated oven and microwave, exposed timber, painted wood panelling, sash window to side aspect and opening to:

UTILITY ROOM: Space and plumbing for washing machine and tumble dryer, exposed timber, double glazed window to side aspect,

fitted bench, exposed brick and stonework and doors to cloakroom and games/garden room.

CLOAKROOM: Low level WC, wash basin, exposed stonework and timber.

GARDEN/GAMES ROOM: 17'1" (narrowing to 11'1") x 11'5" Dual aspect double glazed windows, sliding double glazed patio door to rear garden, feature wall with rustic timber and fitted bar.

From the entrance hall stairs to first floor landing. Radiator and window to side aspect.

FIRST FLOOR

BEDROOM 1: 13'1" x 12'9" Feature cast iron fireplace with painted timber surround, sash window to front aspect and radiator.

BEDROOM 2: 12'9" x 12'5" Feature fireplace, radiator and double glazed window overlooking the rear garden.

BEDROOM 5/STUDY: 9'2" x 5'9" Radiator, fitted wardrobe and sash window to front aspect.

SHOWER ROOM: 11'10" x 9' (max) A modern stylish suite comprising large walk-in shower, vanity wash basin unit, low level WC with concealed cistern, Victorian style radiator, metro style tiling, downlighters, airing cupboard housing wall mounted gas boiler with shelving for linen.

From the first floor landing stairs to second floor landing.

SECOND FLOOR

BEDROOM 3: 13' x 9'4" Radiator and window to rear aspect.

BEDROOM 4: 13'9" x 9'6" Radiator and window to front aspect.

BATHROOM: Panelled bath, low level WC, pedestal wash hand basin, radiator and tiled to splash prone areas.

OUTSIDE

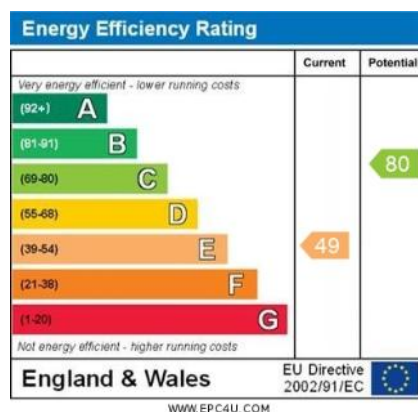
REAR GARDEN: A pleasant paved seating area provides the perfect space for alfresco dining and entertaining with the remainder of the garden mainly laid to lawn. A pathway extends to the rear of the garden where there is work in process to provide off road parking.

SERVICES: Mains water, electricity, drainage, gas central heating and telephone all subject to the usual utility regulations.

COUNCIL TAX BAND: C

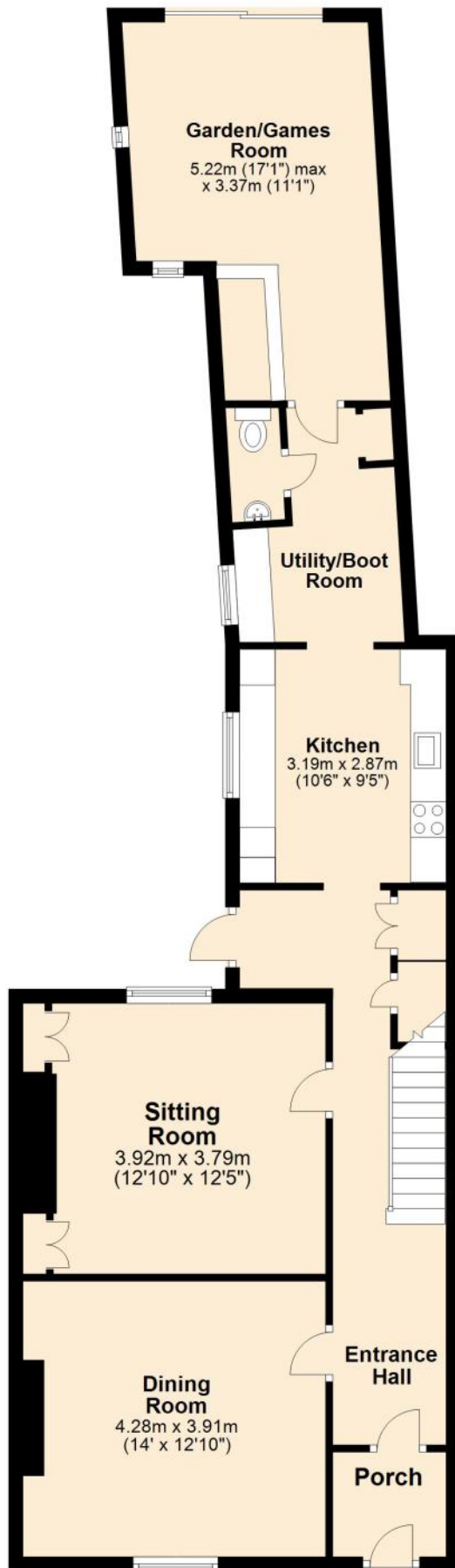
TENURE: Freehold

VIEWING: Strictly by appointment through the agents.



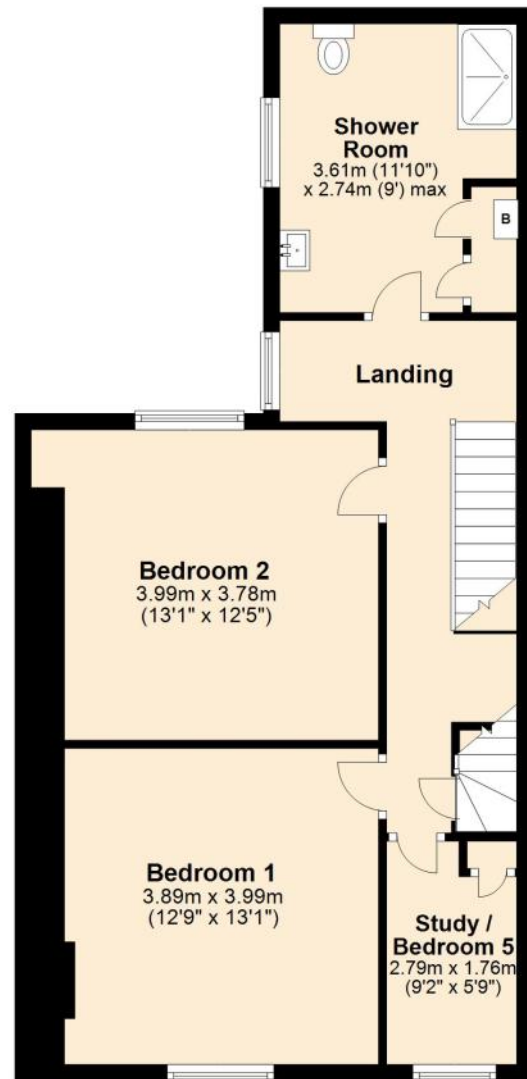
Ground Floor

Approx. 85.7 sq. metres (922.1 sq. feet)



First Floor

Approx. 61.2 sq. metres (658.4 sq. feet)



Second Floor

Approx. 36.3 sq. metres (390.4 sq. feet)



Total area: approx. 183.1 sq. metres (1970.8 sq. feet)



HAMBLETON

ESTATE AGENTS



Important Note: For clarification, we wish to inform prospective purchasers that we have prepared these sales particulars as a general guide. We have not carried out a detailed survey, nor tested the services, appliances and specific fittings. Room sizes should not be relied upon for carpets and furnishings. The particulars do not constitute, or form part of, an offer or a contract. No responsibility is taken for any error, omission or misstatement in these particulars. Hambleton do not make or give whether in these particulars, during negotiation or otherwise, any representation or warranty whatsoever in relation to this property.

