



## Cheriton Drive, £375,000

- COUNCIL TAX BAND E, EPC C, FOUR BEDROOMS, TWO BATH ROOMS
- 21 FT SITTING ROOM AND DINING ROOM, FITTED KITCHEN
- LARGE LOUNGE (20'3 X 13'6), PVC DOUBLE GLAZING
- GAS HEATING, PRIVATE ENTRANCE DRIVE
- LEVEL AND ENCLOSED REAR GARDENS
- WALKING DISTANCE TO LISVANE TRAIN



 4  2  2



## About the property

A well designed four bedroom family house, providing 1300 square feet, and benefiting a very level and enclosed garden together with ample private off road parking. Two large reception rooms, and two full bathrooms. PVC window, and gas heating, seen inside!

## Accommodation

### The Property

This impressive home also benefits a private entrance drive and front garden, finished in block paving to provide plenty of off road private vehicular parking. a lovely modern home in a very convenient location. Must be seen!

**THORNHILL:** Within walking distance situated along Heol Hir, Thornhill is Thornhill Primary School, whilst also close by is a Sainsbury Super Store, a Pharmacy, a Doctors Surgery, a church and Llanishen Golf Course. There are many local pubs and restaurants within Thornhill including within walking distance the Cottage Inn close to Cefn Onn Country Park, The Miller & Carter Steak House, The Pendragon Public House and Restaurant, the New House Hotel and the Manor Park Hotel and restaurant. The iconic Lisvane and Llanishen Reservoir leisure attraction and visitor centre is a 15-minute walk away.



## Ground Floor

### Entrance Porch

Approached via a PVC double glazed part panelled front entrance door inset with obscure glass with matching side screen windows leading to a useful front porch with tiled flooring and spotlights.

### Entrance Hall

Approached via a part panelled entrance door leading to a central hall with a single flight carpeted staircase with hand rail leading to the first floor landing, radiator.

## Lounge

20' 3" x 13' 6" ( 6.17m x 4.11m )

A capacious principal reception room independently approached from the entrance hall via a white traditional style panel door. This versatile and generous room includes sliding PVC double glazed patio doors that open on to a private enclosed level rear garden, whilst the contemporary fireplace with marble hearth and surround is equipped with a living flame coal effect gas fire. Further features include coved ceilings, two double radiators, and a clear glass PVC double glazed window with outlooks on to the frontage road.

## Sitting Room And Dining Room

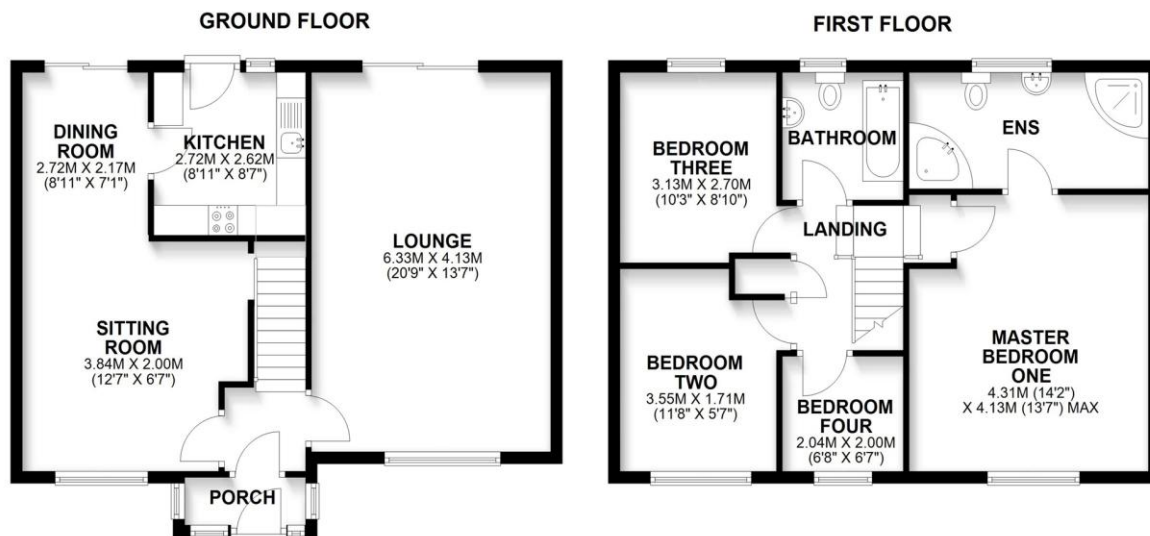
21' 6" x 12' 8" narrowing to 7' 1" ( 6.55m x 3.86m narrowing to 2.16m )

Inset with a white PVC double glazed clear glass window with

02920 618552

llanishen@peteralan.co.uk

## Floorplan



## Important Information

Note while we endeavour to make our sales details accurate and reliable, if there is any point which is of particular interest to you, please contact the office and we will be pleased to confirm the position for you. We have not personally tested any apparatus, equipment, fixtures, fittings or services and cannot verify they are in working order or fit for their purposes. Nothing in these particulars is intended to indicate that carpets or curtains, furnishings or fittings, electrical goods (whether wired or not). Gas fires or light fittings or any other fixtures not expressly included form part of the property offered for sale. This computer generated Floorplan, if applicable, is intended as a general guide to the layout and design of the property. It is not to scale and should not be relied upon for dimensions. Tenure: We cannot confirm the tenure of the property as we have not had access to the legal documents. The buyer is advised to obtain verification from their solicitor or surveyor.

Peter Alan Limited is registered in England and Wales under company number 2073153, Registered Office is Cumbria House, 16-20 Hockliffe Street, Leighton Buzzard, Bedfordshire, LU7 1GN. VAT Registration Number is 500 2481 05. For activities relating to regulated mortgages and non-investment insurance contracts, Peter Alan Limited is an appointed representative of Connells Limited which is authorised and regulated by the Financial Conduct Authority. Connells Limited's Financial Services Register number is 302221. Most buy-to-let