

propertyladder



Maple Drive, Norwich, NR2

Well Kept Three Bedroom Semi Detached Home - No Onward Chain!

GUIDE PRICE £245,000 FREEHOLD



BRITISH
PROPERTY
AWARDS

2025



GOLD WINNER

ESTATE AGENT
IN NORWICH
(NR10-16)

PEACEFUL LIVING WITH ENDLESS POTENTIAL!

Offered chain free, this well looked after semi-detached home presents an excellent opportunity for buyers seeking a property they can modernise and make their own! Enjoying a peaceful setting with a leafy backdrop, the house combines a tranquil feel with the convenience of being just a short distance from the city centre and local amenities.

The accommodation comprises an entrance porch, and a small entrance hall leading into the kitchen, alongside a generous utility/storage room, while a spacious living room runs parallel to these rooms and stretches the full length of the house, creating a light and versatile living space. Upstairs, there are three well proportioned bedrooms off the landing, together with a family bathroom and separate WC.



“ a charming summerhouse creates an ideal spot for relaxing or hobbies ”



Overview

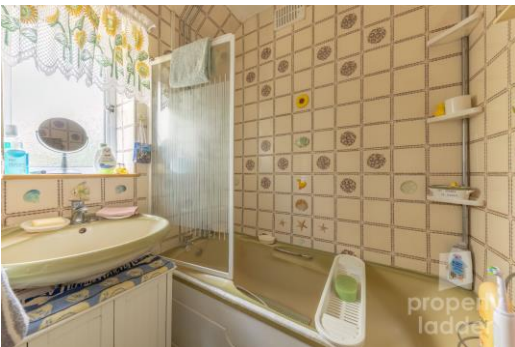
- Three Bedrooms Off Landing
- Leafy Backdrop & Peaceful Garden Setting
- Entrance Porch & Spacious Living Room
- Kitchen & Large Utility Room/Storage Space
- First Floor Bathroom & Separate WC
- Opportunity To Modernise & Further Improve
- Walking Distance To City Centre & Local Amenities
- Generous Front & Rear Gardens





Location

Maple Drive, NR2 is a well positioned residential street to the west of Norwich city centre, offering convenient access to a wide range of amenities nearby to Dereham Road. This well served route provides an excellent selection of supermarkets and convenience stores, including Aldi and Tesco Express, as well as bakeries, takeaways, cafés, pharmacies and everyday essential shops. The area benefits from regular bus services into the city centre, easy access to the A47, and nearby healthcare facilities such as local GP practices and the Norfolk and Norwich University Hospital. With a strong mix of practical amenities and transport links on the doorstep, Maple Drive offers a convenient and well connected place to live!

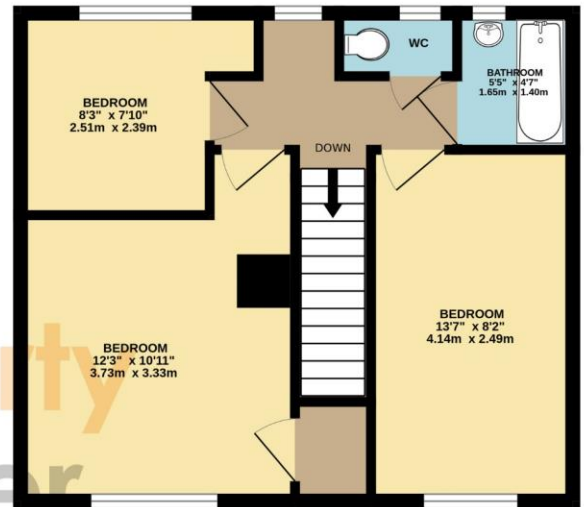
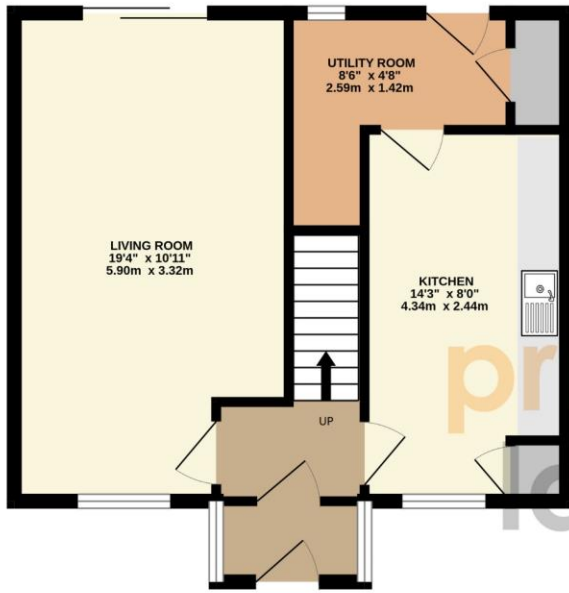


Outside

Outside, the property benefits from an enclosed gated front garden and on road parking. The generous rear garden offers a wonderfully private and established outdoor space, framed by mature trees and a leafy backdrop that enhances the sense of seclusion. A spacious paved patio spans the width of the garden, while a variety of planted borders and potted arrangements add colour and character throughout. To the rear, a charming summerhouse creates an ideal spot for relaxing or hobbies, complemented by additional storage and fenced boundaries for practicality.

GROUND FLOOR
443 sq.ft. (41.2 sq.m.) approx.

1ST FLOOR
420 sq.ft. (39.0 sq.m.) approx.



TOTAL FLOOR AREA : 863 sq.ft. (80.2 sq.m.) approx.

Whilst every attempt has been made to ensure the accuracy of the floorplan contained here, measurements of doors, windows, rooms and any other items are approximate and no responsibility is taken for any error, omission or mis-statement. This plan is for illustrative purposes only and should be used as such by any prospective purchaser. The services, systems and appliances shown have not been tested and no guarantee as to their operability or efficiency can be given.
Made with Metropix ©2026

FULL EPC AVAILABLE UPON REQUEST

Score	Energy rating	Current	Potential
92+	A		
81-91	B		
69-80	C		79 C
55-68	D	60 D	
39-54	E		
21-38	F		
1-20	G		

COUNCIL TAX BAND: B

LOCAL AUTHORITY: NORWICH CITY COUNCIL

SERVICES CONNECTED: MAINS WATER, MAIN DRAINS, MAINS ELECTRICITY, GAS CENTRAL HEATING

Selling your home?

If you are considering selling your home, please contact us for your no obligation free market appraisal.

BRITISH PROPERTY AWARDS 2025
GOLD WINNER
ESTATE AGENT IN NORWICH (NR10-16)

98 Crostwick Lane, Spixworth, NR10 3NQ
T 01603 898100
propertyladderonline.com

IMPORTANT NOTICE: Property Ladder, their clients and any joint agents give notice that: 1. They are not authorised to make or give any representations or warranties in relation to the property either here or elsewhere, either on their own behalf or on behalf of their client or otherwise. They assume no responsibility for any statement that may be made in these particulars. These particulars do not form part of any offer or contract and must not be relied upon as statements or representations of fact. 2. Any areas, measurements or distances are approximate. The text, photographs and plans are for guidance only and are not necessarily comprehensive. It should not be assumed that the property has all necessary planning, building regulation or other consents and Property Ladder have not tested any services, equipment or facilities. Purchasers must satisfy themselves by inspection or otherwise.