



pa peter
alan

Moorland Road offers in the region of £370,000

- No On-Going Chain!
- Sought after location
- Four Double Bedrooms
- Off Road Parking
- Excellent Family Home
- EPC Rating: C



pa peter
alan

 4  2  2

pa peter
alan

01639 635115
neath@peteralan.co.uk



About the property

Situated on the desirable Moorland Road in Port Talbot, this generously sized four bedroom detached property offers an excellent family home with the added benefit of off road parking to the rear and no on-going chain. Conveniently located to well renowned local schools, public transport routes and Port Talbot Town Centre! Boasting less than a 10 minute walk to Aberavon Sea Front and excellent links to the M4 corridor. The home is approached via a lawned garden with a paved path to the entrance porch. Internally, the home comprises of an entrance hallway, with stairs to the first floor, a ground floor w.c, two well maintained receptions rooms and a kitchen diner with patio doors to the garden. To the first floor, the property further benefits four double bedrooms along with a family bathroom, making it an ideal purchase for buyers looking to create their ideal family home. To the rear the home further benefits a patio area and lawned enclosed garden with rear gated access for parking. Internal Viewings are highly recommended to truly appreciate this home!

Accommodation

Lounge

10' 8" max x 10' 9" max (3.25m max x 3.28m max)

Reception Room

10' 10" x 17' 9" (3.30m x 5.41m)

Kitchen

10' 3" max x 24' 8" max (3.12m max x 7.52m max)

Bedroom 1

11' 1" max x 17' 10" max (3.38m max x 5.44m max)



Bedroom 2

19' 6" max x 14' 1" max (5.94m max x 4.29m max)

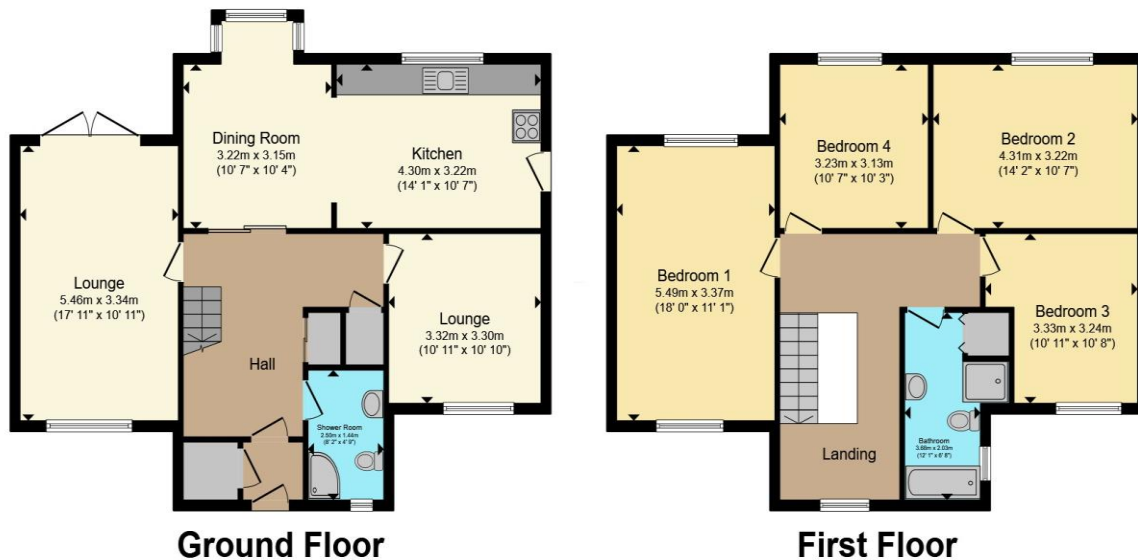
Bedroom 3

10' 6" max x 10' 3" max (3.20m max x 3.12m max)

Bedroom 4

10' 9" x 10' 6" (3.28m x 3.20m)

Floorplan



Total floor area 154.7 m² (1,665 sq.ft.) approx

This floor plan is for illustrative purposes only. It is not drawn to scale. Any measurements, floor areas (including any total floor area), openings and orientation are approximate. No details are guaranteed, they cannot be relied upon for any purpose and they do not form part of any agreement. No liability is taken for any error, omission or misstatement. A party must rely upon its own inspection(s). Powered by www.propertybox.io



Important Information

Note while we endeavour to make our sales details accurate and reliable, if there is any point which is of particular interest to you, please contact the office and we will be pleased to confirm the position for you. We have not personally tested any apparatus, equipment, fixtures, fittings or services and cannot verify they are in working order or fit for their purposes. Nothing in these particulars is intended to indicate that carpets or curtains, furnishings or fittings, electrical goods (whether wired or not), Gas fires or light fittings or any other fixtures not expressly included form part of the property offered for sale. This computer generated Floorplan, if applicable, is intended as a general guide to the layout and design of the property. It is not to scale and should not be relied upon for dimensions. Tenure: We cannot confirm the tenure of the property as we have not had access to the legal documents. The buyer is advised to obtain verification from their solicitor or surveyor.

Peter Alan Limited is registered in England and Wales under company number 2073153, Registered Office is Cumbria House, 16-20 Hockliffe Street, Leighton Buzzard, Bedfordshire, LU7 1GN. VAT Registration Number is 500 2481 05. For activities relating to regulated mortgages and non-investment insurance contracts, Peter Alan Limited is an appointed representative of Connells Limited which is authorised and regulated by the Financial Conduct Authority. Connells Limited's Financial Services Register number is 302221. Most buy-to-let

