



Lindsay Close, offers over £210,000

- Three bedroom semi-detached
- Garage and Driveway
- No Ongoing chain
- Council Tax Band D
- Close to local transport links and amenities
- EPC Rating: C



 3  1  1



About the property

Nestled in a quiet and desirable cul-de-sac in the popular area of Pencoed, Bridgend, this spacious three-bedroom semi-detached dormer bungalow presents a fantastic opportunity for first-time buyers or growing families alike. Offered for sale with no ongoing chain, this versatile home combines generous living accommodation with superb outdoor space and excellent local amenities.

The property boasts a welcoming entrance hall leading to a well-appointed kitchen and a spacious lounge featuring sliding French doors that open directly onto the private rear garden, perfect for indoor-outdoor living. The ground floor also hosts two generously sized bedrooms and a family bathroom, providing flexible space for family life or home office use.

Upstairs, the large master bedroom benefits from built-in cupboards and offers exciting potential to create an en-suite, adding further value and comfort.

Externally, the home enjoys both front and rear gardens, a detached garage, and a gated tandem driveway, providing ample secure parking.



Accommodation

Entrance Hall

11' 11" max x 17' 2" max (3.63m max x 5.23m max)

Reception Room

Wardrobe

10' 11" max x 13' 9" (3.33m max x 4.19m)

5' 3" x 10' 10" (1.60m x 3.30m)

Kitchen

Externally

8' 10" x 9' 10" (2.69m x 3.00m)

Garage

Bedroom Two

12' 1" x 10' 10" (3.68m x 3.30m)

Bedroom Three

9' x 8' 10" (2.74m x 2.69m)

Bathroom

First Floor

Landing

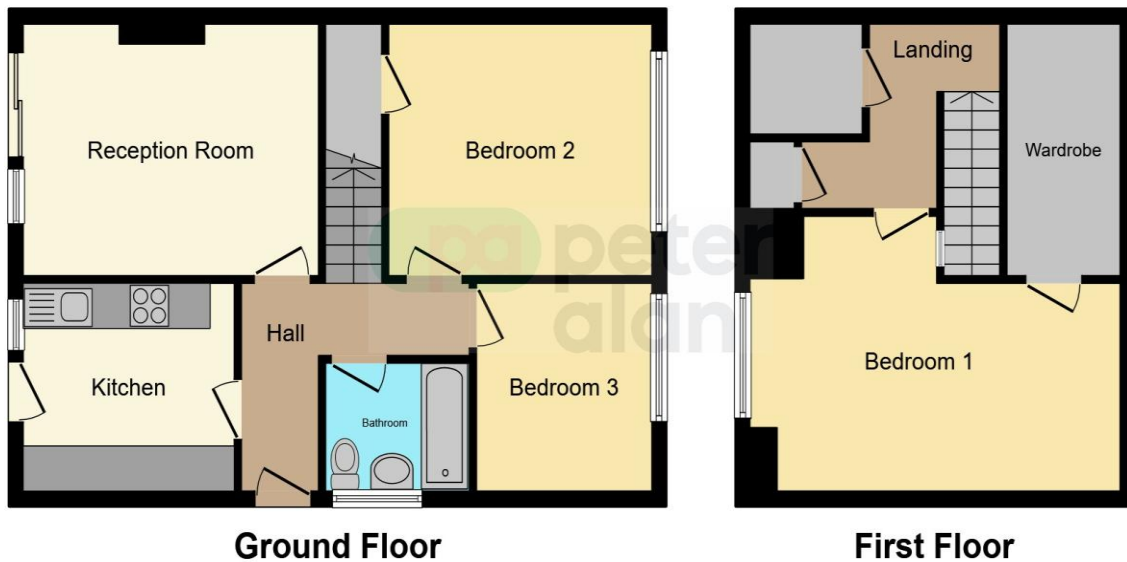
Storage Cupboard

Bedroom One

01656 657201

bridgend@peteralan.co.uk

Floorplan



This floor plan is for illustrative purposes only. It is not drawn to scale. Any measurements, floor areas (including any total floor area), openings and orientation are approximate. No details are guaranteed, they cannot be relied upon for any purpose and they do not form part of any agreement. No liability is taken for any error, omission or misstatement. A party must rely upon its own inspection(s). Powered by www.focalagent.com

Important Information

Note while we endeavour to make our sales details accurate and reliable, if there is any point which is of particular interest to you, please contact the office and we will be pleased to confirm the position for you. We have not personally tested any apparatus, equipment, fixtures, fittings or services and cannot verify they are in working order or fit for their purposes. Nothing in these particulars is intended to indicate that carpets or curtains, furnishings or fittings, electrical goods (whether wired or not). Gas fires or light fittings or any other fixtures not expressly included form part of the property offered for sale. This computer generated Floorplan, if applicable, is intended as a general guide to the layout and design of the property. It is not to scale and should not be relied upon for dimensions. Tenure: We cannot confirm the tenure of the property as we have not had access to the legal documents. The buyer is advised to obtain verification from their solicitor or surveyor.

Peter Alan Limited is registered in England and Wales under company number 2073153, Registered Office is Cumbria House, 16-20 Hockliffe Street, Leighton Buzzard, Bedfordshire, LU7 1GN. VAT Registration Number is 500 2481 05. For activities relating to regulated mortgages and non-investment insurance contracts, Peter Alan Limited is an appointed representative of Connells Limited which is authorised and regulated by the Financial Conduct Authority. Connells Limited's Financial Services Register number is 302221. Most buy-to-let

