



Heol Y Cwrt

£370,000

- No Chain
- A partial Garage conversion
- EVG Charger
- Double Drive
- Modern Living Through Out
- Private Enclosed Garden
- EPC Rating: C



 4  2  2



About the property

This spectacular property is offered with no onward chain and is ideally situated within a sought-after local area, benefiting from excellent public transport links, nearby walking routes, and beautiful parks just a stone's throw away.

Internally, the property is equally as impressive, offering four double bedrooms, including a spacious master bedroom with en-suite. Two further bedrooms benefit from built-in wardrobes, alongside a modern family bathroom and downstairs cloakroom.

The stylish family lounge features a contemporary built-in media wall with an electric fireplace, creating a sleek and modern finish. This high standard continues into the stunning open-plan kitchen and dining area, complete with quartz worktops, breakfast bar, five-ring gas hob, integrated oven and grill, and ample space for an American-style fridge freezer.

Externally, the luxurious feel continues with a beautifully maintained garden featuring a patio area and lawn, ideal for entertaining and family living. The property also benefits from a double driveway with EV charger and a part-converted garage, currently styled as a sleek entertainment area.



Accommodation

Lounge

21' 5" x 11' 3" (6.53m x 3.43m)

Dining Room

12' x 10' 1" (3.66m x 3.07m)

Kitchen / Breakfast Room

15' 11" x 14' 7" (4.85m x 4.45m)

Office /Sitting Room

11' 4" x 10' 11" (3.45m x 3.33m)

Master Bedroom

11' 8" x 11' 5" (3.56m x 3.48m)

Bedroom Two

11' 7" x 11' 2" (3.53m x 3.40m)

Bedroom Three

10' 11" x 9' 7" (3.33m x 2.92m)

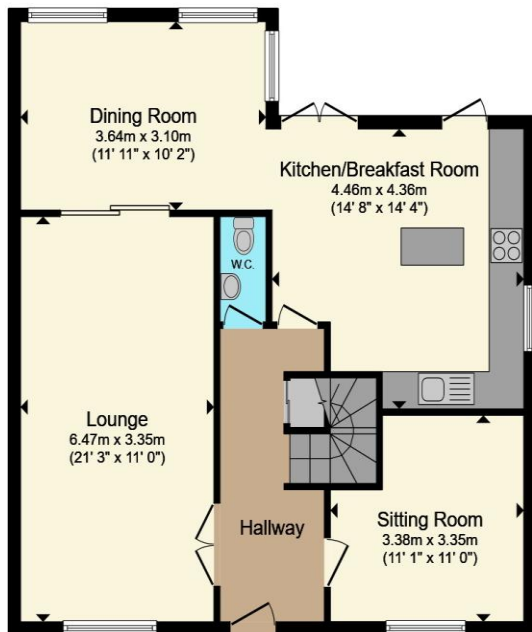
Bedroom Four

14' 6" x 10' 10" (4.42m x 3.30m)

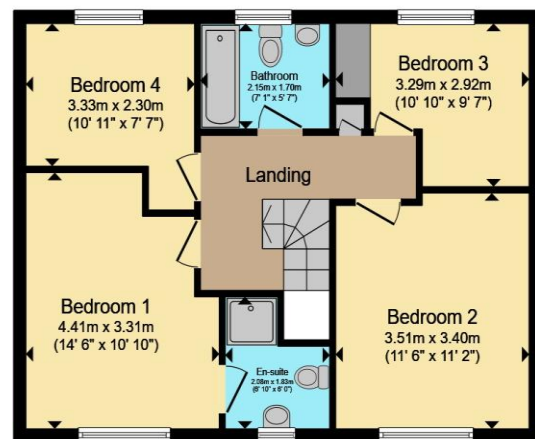
01656 771600

porthcawl@peteralan.co.uk

Floorplan



Ground Floor



First Floor

Total floor area 133.4 m² (1,436 sq.ft.) approx

This floor plan is for illustrative purposes only. It is not drawn to scale. Any measurements, floor areas (including any total floor area), openings and orientation are approximate. No details are guaranteed, they cannot be relied upon for any purpose and they do not form part of any agreement. No liability is taken for any error, omission or misstatement. A party must rely upon its own inspection(s). Powered by www.propertybox.io



Important Information

Note while we endeavour to make our sales details accurate and reliable, if there is any point which is of particular interest to you, please contact the office and we will be pleased to confirm the position for you. We have not personally tested any apparatus, equipment, fixtures, fittings or services and cannot verify they are in working order or fit for their purposes. Nothing in these particulars is intended to indicate that carpets or curtains, furnishings or fittings, electrical goods (whether wired or not). Gas fires or light fittings or any other fixtures not expressly included form part of the property offered for sale. This computer generated Floorplan, if applicable, is intended as a general guide to the layout and design of the property. It is not to scale and should not be relied upon for dimensions. Tenure: We cannot confirm the tenure of the property as we have not had access to the legal documents. The buyer is advised to obtain verification from their solicitor or surveyor.

Peter Alan Limited is registered in England and Wales under company number 2073153, Registered Office is Cumbria House, 16-20 Hockliffe Street, Leighton Buzzard, Bedfordshire, LU7 1GN. VAT Registration Number is 500 2481 05. For activities relating to regulated mortgages and non-investment insurance contracts, Peter Alan Limited is an appointed representative of Connells Limited which is authorised and regulated by the Financial Conduct Authority. Connells Limited's Financial Services Register number is 302221. Most buy-to-let

