

Unit 9 Darnley Road (B Unit Nine), London, E9 6QH



£3,600 Per month

Unit 9 Darnley Road (B Unit Nine), London, E9 6QH

1B Darnley Road (E9) - Unit 9

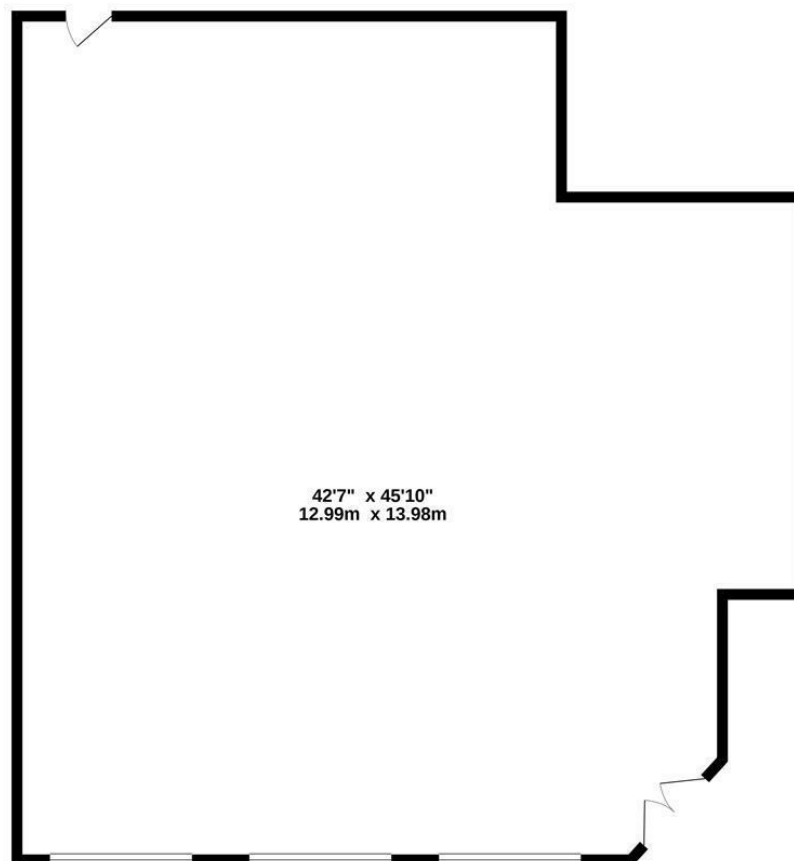
Rare opportunity for lease of commercial work units in two Victorian factory warehouses just off Mare Street in Hackney (E9). Multiple units available --- Various sizes

Full of character with tons of original rustic features. Excellent creative space for recording studios (some units are pre-fitted with recording and live rooms), photography studios, art workshops, art galleries, architect offices, gym and fitness studios, yoga studios etc. The building is adjacent to London Fields and close to Hackney Central station.

Rental - £3600 pcm
Floor Size - 1800 Sqft Approx
Commercial Use Class - B1/B3/B8
EPC - Band C
Business Rates - RV £37000

NB - Tenants are responsible for monthly rental payments, metered electric & business rates (If applicable to the unit and/or business) & commercial waste management. If the unit has access to water & waste then a small service charge will be applicable.

UNIT 9 (GROUND FLOOR)
1752 sq.ft. (162.7 sq.m.) approx.



STEPHEN HOUSE 1B DARNLEY ROAD LONDON E9 6QH (UNIT 9)

TOTAL FLOOR AREA : 1752 sq ft. (162.7 sq.m.) approx.
Whilst every attempt has been made to ensure the accuracy of the floorplan contained here, measurements of doors, windows, rooms and any other items are approximate and no responsibility is taken for any error, omission or mis-statement. This plan is for illustrative purposes only and should be used as such by any prospective purchaser. The services, systems and appliances shown have not been tested and no guarantee as to their operability or efficiency can be given.
Made with Mempro ©2020.



54/56 Barking Road
East Ham, London E6 3BP
Telephone: (020) 8472 4422
Property Management: (020) 8471 4224
Fax: (020) 8471 5052
E-mail: eastham@mcdowalls.com
Website: www.mcdowalls.com

