



Bank Street, Bishops Waltham - Asking Price £595,000

# WHITE CULVERS, BANK STREET, BISHOPS WALTHAM, HAMPSHIRE, SO32 1AN

Brimming with period features and dating back to the 18th century is this beautiful Grade II listed five bedroom character home located in the heart of the village of Bishops Waltham and offers huge potential to renovate and improve.

In brief, the accommodation comprises a 22ft drawing room, sitting room, kitchen/breakfast room, bathroom and access to two spacious cellars on the ground floor. The first floor features three double sized bedrooms and a family bathroom. A further two bedrooms can be found on the second floor.

Externally the property benefits from a double garage with power and lighting and adjoining office spaces, off road parking providing space for multiple vehicles and an attractive enclosed rear garden.

- Grade II Listed Period Property
- Five Bedrooms
- Kitchen/Breakfast Room
- Two Bathrooms
- External Office Space
- Double Garage



## THE PROPERTY

Entered through an original front door is a kitchenette with windows looking to the front aspect. This area features a range of fitted base units and spaces for all the necessary appliances.

Continuing through the kitchenette through another door is the spacious drawing room with three sash windows and original exposed beams. An open fireplace with exposed brick chimney breast and oak mantel acts as the main focal point of the room.

Leading off the drawing room is an inner hallway with access to two good sized cellars. A separate sitting room features two sash windows, original cast iron fireplace, original coving, fitted cupboards and a door accessing a downstairs bathroom with bath, W.C and wash hand basin.

The Kitchen/Breakfast room is an attractive space with a matching range of oak wall and base units, integrated double oven and electric induction hob. Oak flooring features throughout and there is a door leading into a walk in pantry. A further door to the side of the room provides access to a rear lobby which then provides access into the rear garden.





On the first floor are three bedrooms including the master bedroom with two windows overlooking the front aspect and a feature wattle and daub plastered wall. Bedroom two features sash windows again overlooking the front, an open fireplace and fitted cupboards. Bedroom three is double aspect and has access to a loft space. The family bathroom serves all the bedrooms on this floor and features a bath with shower over, and wash hand basin.



Bedrooms four and five can be found on the second floor and are both double in size.



Externally, the property benefits from driveway parking for multiple vehicles which is accessed from Shore Lane via a five bar gate and a double garage with power and light. Directly adjoining the garage are two offices spaces.

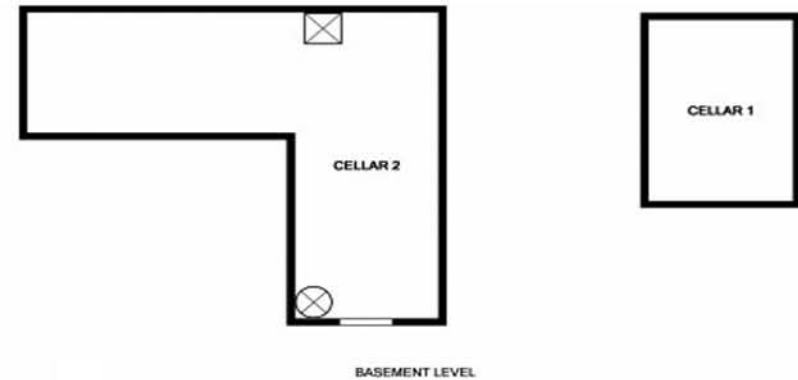
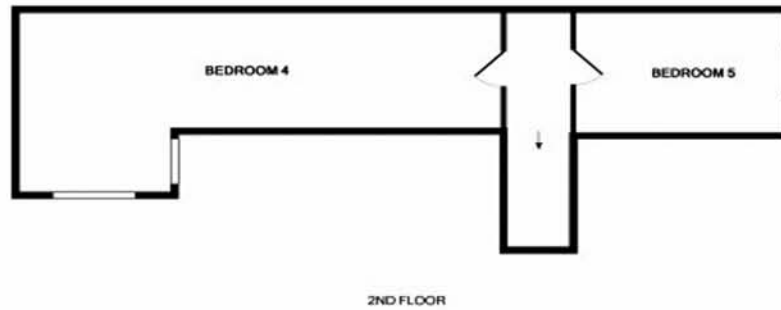
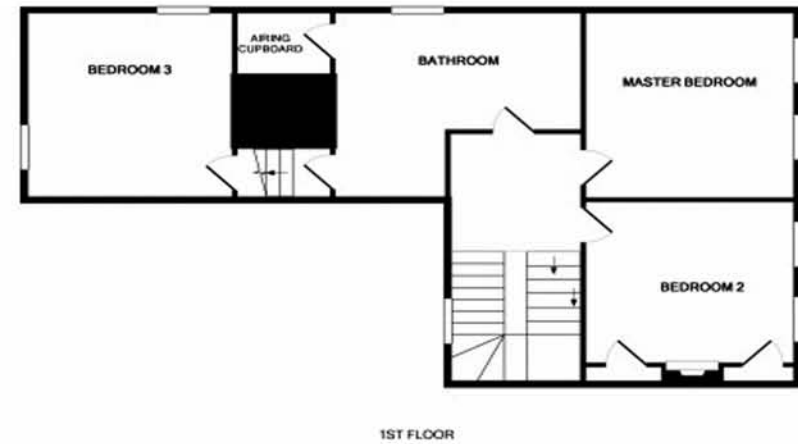
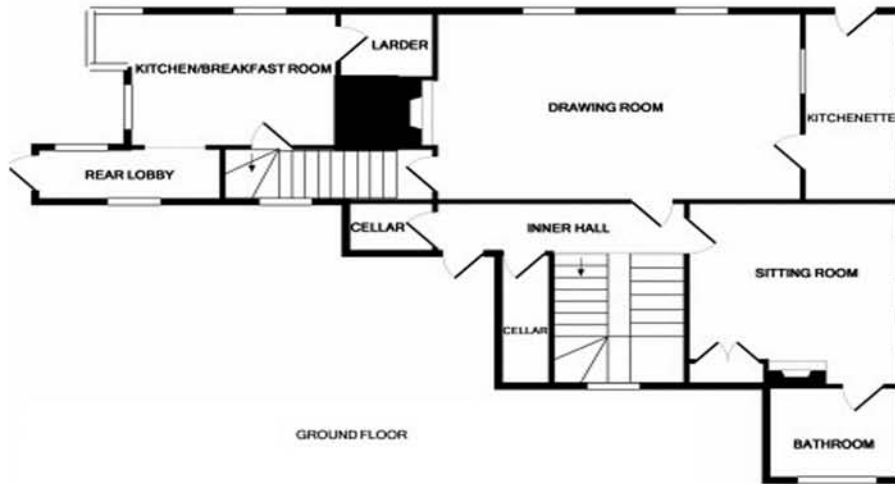


## THE LOCATION

Bishops Waltham is a historic village with a wide variety of services including a number shops, restaurants, bars, a post office, public house & parks.

The cities of Winchester, Southampton and Portsmouth can be reached in around 30 minutes, with access to London also convenient via the M3.





Wickham Office  
 The Old Timbers, The Square,  
 Wickham, Hampshire PO17 5JG  
 Tel. 01329 834835  
 Email. [wickham@harringtonsproperty.co.uk](mailto:wickham@harringtonsproperty.co.uk)  
[www.harringtonsproperty.co.uk](http://www.harringtonsproperty.co.uk)

Important Notice: Harringtons, their clients and any joint agents give notice that 1: They are not authorised to make or give any representations or warranties in relation to the property either here or elsewhere, either on their own behalf or on behalf of their client or otherwise. They assume no responsibility of any statement that may be made in these particulars. These particulars do not form part of any offer or contract and must not be relied upon as statements or representations of fact. 2: Any areas measurements or distances are approximate. The text, photographs and plans are for guidance only and are not necessarily comprehensive. It should not be assumed that the property has all necessary planning, building regulation or other consents and Harringtons have not tested any services, equipment or facilities. Purchasers must satisfy themselves by inspection or otherwise.