



BRITISH
PROPERTY
AWARDS

2018



GOLD WINNER

ESTATE AGENT IN
LEIGH-ON-SEA



BRITISH
PROPERTY
AWARDS

2017



GOLD WINNER

ESTATE AGENT
IN LEIGH-ON-SEA



Jetty Mews, Southend on sea

OFFERS IN EXCESS OF £220,000

FANTASTIC LOCATION: Castle Estate Agents are delighted to offer FOR SALE this well presented 2 DOUBLE BEDROOM FIRST FLOOR MASSONETTE set within an easy walk to LOCAL SHOPS, BARS, RESTUARANTS and SOUTHCHURCH PARK benefiting from a GARAGE and spacious LOUNGE/DINER.

- Two double bedrooms
- Long lease
- En-suite
- Walk to sea front
- Gas central heating
- First floor masonette
- Large lounge/diner
- Garage
- Double glazed
- Walk to Southend East train station

£220,000 Leasehold

Front aspect

Well stocked communal front garden and laid to lawn leading to your own double glazed front door to:



Inner hallway

Stair to first floor and landing, double glazed window to rear aspect, doors to all rooms, 2 x radiators, power points, coving, telephone point, storage cupboard, loft access, part boarded, power and lighting.



Lounge area 13' 4" by 13' 3" (4m 6cm by 4m 4cm), Max

Double glazed bay window to the front aspect with fitted blinds, coving, power points, tv point, radiator, arch to:



Dining area 9' 2" by 7' 5" (2m 79cm by 2m 26cm), ()

Double glazed window to front aspect with fitted blind, coving, power points, radiator, arch to:



Kitchen 9' 1" by 9' (2m 77cm by 2m 74cm), ()

Double glazed window to the side aspect, down lighters, eye level and base level units, tiled splash backs, boxed edge work surfaces, stainless steel sink and single drainer with mixer taps, power points, 4 ring gas hob with under oven and over extractor fan, fridge freezer and washing mashing and Lino.



Bedroom 1 13' 5" by 9' 5" (4m 9cm by 2m 87cm), ()

Double glazed window to the rear aspect, radiator, coving, power points, tv point, door to:

En-suite

3 piece White suite comprising of a low level flush toilet, hand wash basin, shower cubicle with wall mounted mains shower, Double glazed frosted window to the front aspect, tiled splash backs, down lighters, radiator, extractor fan, shaver point.

Bedroom 2 14' 1" by 11' 2" (4m 29cm by 3m 40cm), ()

Double glazed window to the front aspect, radiator, power points, coving.

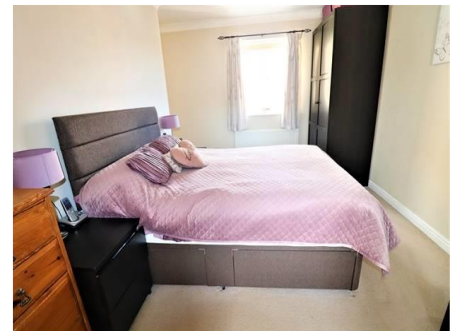
Whilst we endeavour to make our sales particulars as accurate and reliable as possible, if there is any point which is of particular importance to you, please contact the office and we will be pleased to check the information. The mention of any appliances and/or services in these details does not imply that these are in full and efficient working order or have been inspected by ourselves. Please be advised that some of the particulars may be awaiting vendor approval. Please contact us should you have any queries and we will try our utmost to assist.

Bathroom

3 piece White suite comprising of a low level flush toilet, hand wash basin, panel enclosed bath with mixer taps and shower attachment, tiled splash backs, down lighters, radiator, extractor fan, shaver point.

Garage

To the side of the property with an up and over door.



Energy Efficiency Rating		
	Current	Potential
<i>Very energy efficient - lower running costs</i>		
(92-100) A		
(81-91) B		
(69-80) C	77	78
(55-68) D		
(39-54) E		
(21-38) F		
(1-20) G		
<i>Not energy efficient - higher running costs</i>		
England & Wales	EU Directive 2002/91/EC	

Environmental (CO ₂) Impact Rating		
	Current	Potential
<i>Very environmentally friendly - lower CO₂ emissions</i>		
(92-100) A		
(81-91) B		
(69-80) C	78	78
(55-68) D		
(39-54) E		
(21-38) F		
(1-20) G		
<i>Not environmentally friendly - higher CO₂ emissions</i>		
England & Wales	EU Directive 2002/91/EC	

Whilst we endeavour to make our sales particulars as accurate and reliable as possible, if there is any point which is of particular importance to you, please contact the office and we will be pleased to check the information. The mention of any appliances and/or services in these details does not imply that these are in full and efficient working order or have been inspected by ourselves. Please be advised that some of the particulars may be awaiting vendor approval. Please contact us should you have any queries and we will try our utmost to assist.



Whilst we endeavour to make our sales particulars as accurate and reliable as possible, if there is any point which is of particular importance to you, please contact the office and we will be pleased to check the information. The mention of any appliances and/or services in these details does not imply that these are in full and efficient working order or have been inspected by ourselves. Please be advised that some of the particulars may be awaiting vendor approval. Please contact us should you have any queries and we will try our utmost to assist.