



Q Investments
International



2 Bedroom Apartment / Flat
Canary Wharf, E14 8RW

£3,740

<https://qinvestments.london>



London, Canary Wharf, E14 8RW

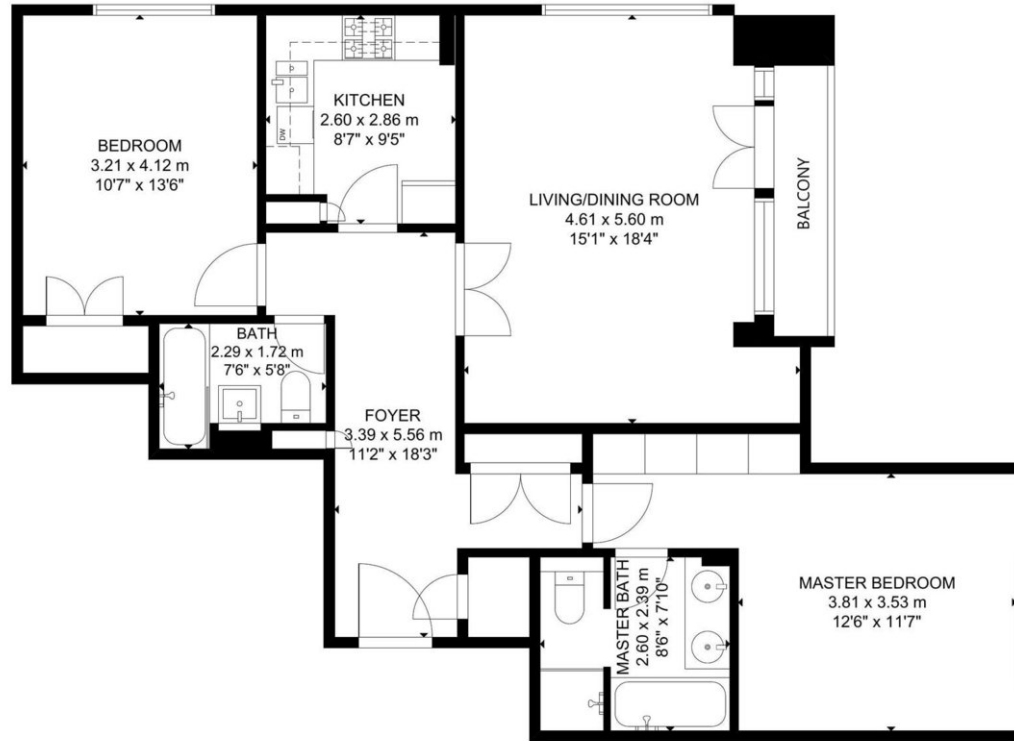
Available now, covering 971 square feet. in living space and situated on the 10th floor, this modern property is currently furnished and comes with big windows, high ceilings, and ample storage. Residents further benefit from porter facilities, 24hr security, TV Room and private gated gardens.

The space boasts floor to ceiling windows that allow in an abundance of natural light, while a private balcony with dramatic views of the impressive Canary Wharf skyline provides a relaxing setting.

A separate fully equipped kitchen with stylish LED under cabinet mood lighting, full-sized fridge/freezers, electric ovens with gas hobs, microwave ovens, external extractors, 1.5 sinks with food waste disposal, dishwashers, and washer dryers, so that you have everything you need from the day you move in.

The flat is student friendly and has a current EPC rating of C. Located on a quiet street, the property is located only moments away from Canary Wharf station, the docklands and many restaurants and amenities.

The apartment is ideally positioned within easy access of Zone 2 stations of Westferry (DLR), Canary Wharf (Jubilee) and Crossrail (Elizabeth line), adding to the extensive transport links including tree lined riverside footpaths, Thames Clipper river service, and local buses.



TENTH FLOOR

GROSS INTERNAL AREA
 TOTAL: 90 m²/971 sq ft
 TENTH FLOOR: 90 m²/971 sq ft
 SIZE AND DIMENSIONS ARE APPROXIMATE, ACTUAL MAY VARY.

