



Locket Road

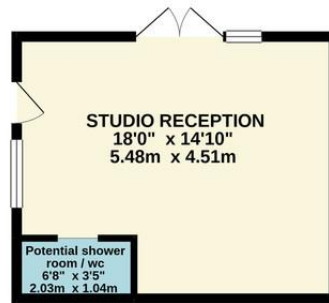
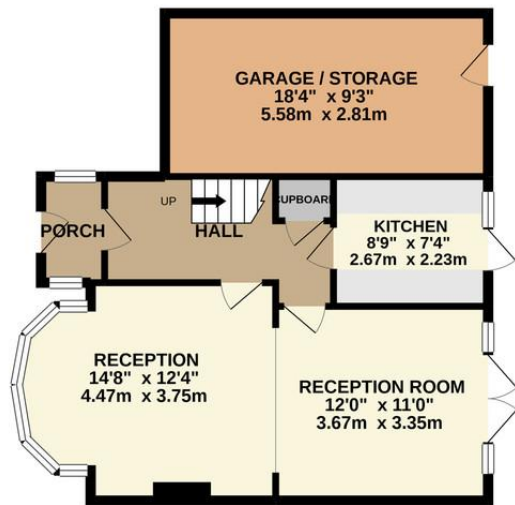
Harrow, HA3 7NR

£650,000

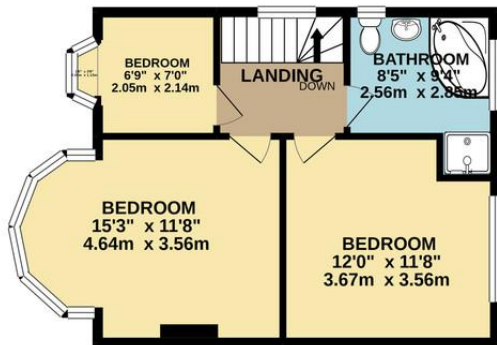
A three bedroom semi-detached house situated on a wide corner plot with potential to extend to the side, rear and loft (subject to planning permission). The property also has a detached outbuilding at the rear of the 80' south facing rear garden which has plumbing for a shower room / wc etc. Located close to Belmont and St Josephs primary schools and midway between Wealdstone High Street and Belmont Circle for shops.



GROUND FLOOR
895 sq.ft. (83.1 sq.m.) approx.



1ST FLOOR
457 sq.ft. (42.4 sq.m.) approx.



TOTAL FLOOR AREA : 1352 sq.ft. (125.6 sq.m.) approx.

Whilst every attempt has been made to ensure the accuracy of the floorplan contained here, measurements of doors, windows, rooms and any other items are approximate and no responsibility is taken for any error, omission or mis-statement. This plan is for illustrative purposes only and should be used as such by any prospective purchaser. The services, systems and appliances shown have not been tested and no guarantee as to their operability or efficiency can be given.
Made with Metropix ©2021.



EPC Rating: to be confirmed

Belmont Circle Office
506 Kenton Lane
Harrow
Middlesex
HA3 8RD

www.blacklersestateagents.co.uk
0208 907 7701
sales@blacklersstates.co.uk

Agents Note: Whilst every care has been taken to prepare these particulars, they are for guidance purposes only. All measurements are approximate and are for general guidance purposes only and whilst every care has been taken to ensure their accuracy, they should not be relied upon and potential buyers/tenants are advised to recheck the measurements