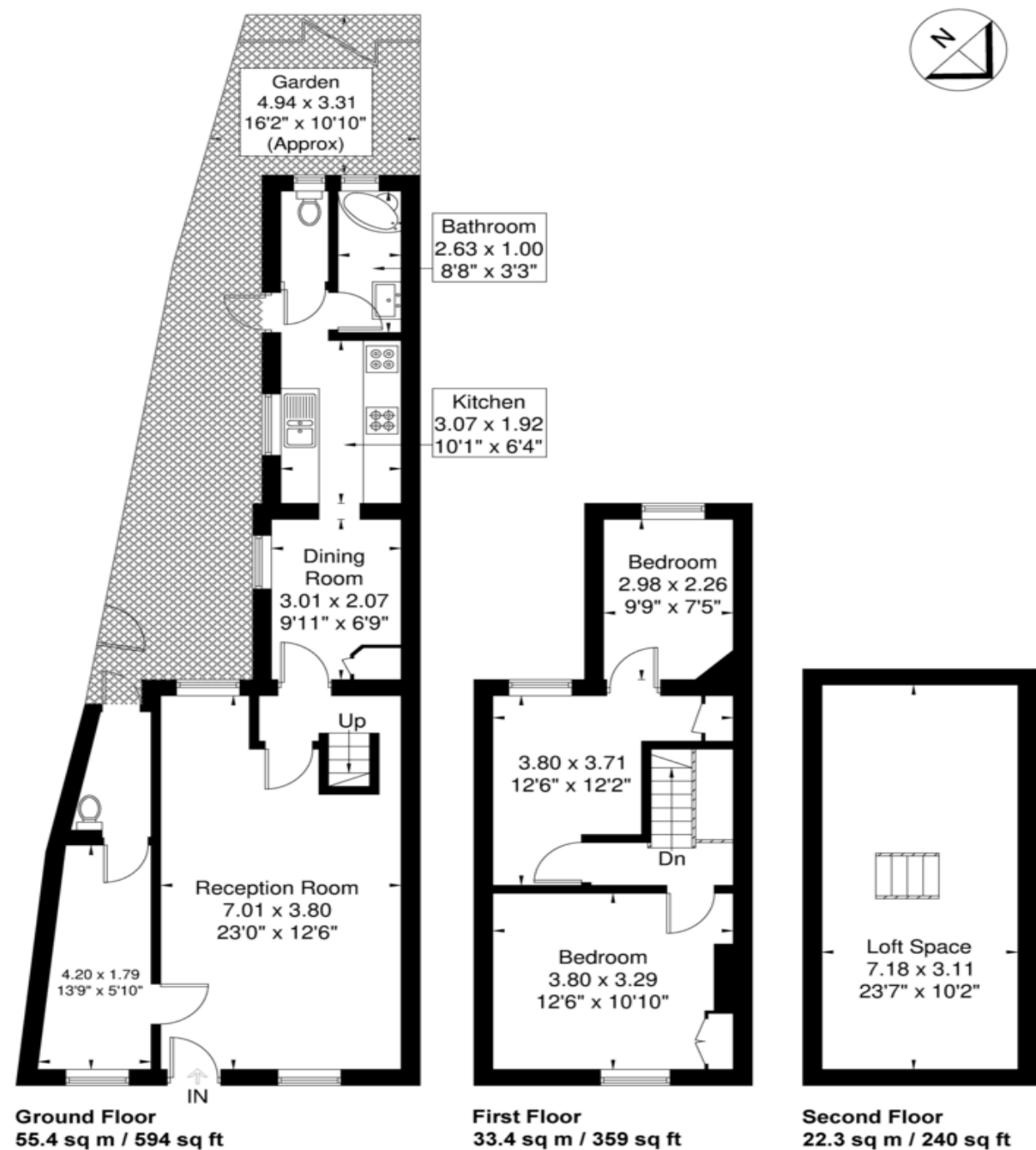


Cromwell Road

Approximate Gross Internal Area = 88.8 sq m / 955 sq ft
 Loft = 22.3 sq m / 240 sq ft
 Total = 111.1 sq m / 1195 sq ft



Although every attempt has been made to ensure accuracy, all measurements are approximate.
 The floorplan is for illustrative purposes only and not to scale.
 © www.perspective.co.uk



Cromwell Road, Wembley, HA0 1JS

£450,000 Freehold

Key Features

- Three bedrooms
- Loft Room
- Two Reception Rooms
- Separate Kitchen
- Two Bathrooms
- Close To Public Transport

Description

Three-bedroom end of terrace house situated close to Hanger Lane set back from Hanger Lane in a quiet residential street. The property on the ground floor comprises a side return two reception room and two bathrooms. The accommodation on the first floor comprises three bedrooms there is also a loft room on the second floor. The property could make a great investment for HMO use or a family home. Cromwell road is located within reach of both Alperton & Hanger Lane train station.

