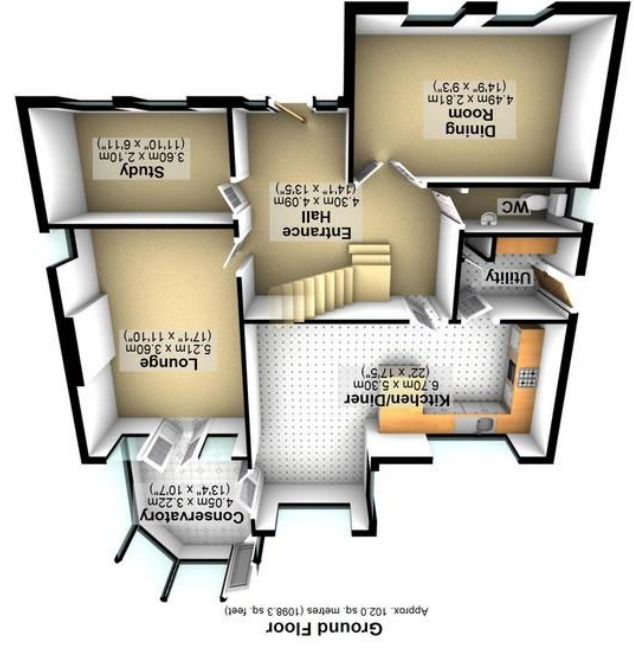
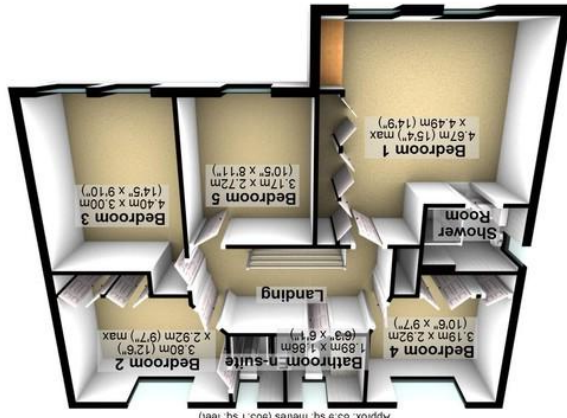


Agents Note: Whilst every care has been taken to prepare these particulars, they are for guidance purposes only. All measurements are approximate and whilst every care has been taken to ensure their accuracy, they should not be relied upon and potential buyers/tenants are advised to recheck the measurements.

WWW.EPC4U.COM

Total area: approx. 220.0 sq. metres (2368.5 sq. feet)

Energy Efficiency Rating	
Potential	Current
A (92+)	73
B (81-91)	
C (69-80)	
D (55-68)	
E (39-54)	
F (21-38)	
G (1-20)	
Not energy efficient - higher running costs	
EU Directive 2002/91/EC	





44 Oxclose Park View | Halfway | Sheffield | S20 8GQ Property Tenure: Leasehold

Only on a detailed internal inspection can the standard and space on offer in this stylish and imposing five bedroomed detached family home be truly appreciated. Located at the corner of this quiet and popular Cul-De-Sac. Having being finished throughout to a very high standard this property would be perfect for the growing family. It benefits from not only having a wealth of local amenities but also fantastic transport links and many local reputable schools. Briefly consists of an entrance hallway, study, dining room, large and well-appointed dining kitchen, lounge, laundry room, conservatory, five double bedrooms (two with en-suites) and family bathroom. Outside is a private, family friendly garden, large double garage and off road parking for numerous vehicles.



**PROPERTY FEATURES**

- FIVE BEDROOMS
- THREE BATHROOMS
- DETACHED FAMILY HOME
- DOUBLE GARAGE
- REPUTABLE LOCAL SCHOOLS
- QUIET LOCATION
- GREAT FAMILY HOME
- EXCELLENT TRANSPORT LINKS
- CLOSE TO LOCAL AMENITIES
- LEASEHOLD WITH 106 YEARS REMAINING COUNCIL TAX BAND F

**OFFERS IN REGION OF £450,000**

