

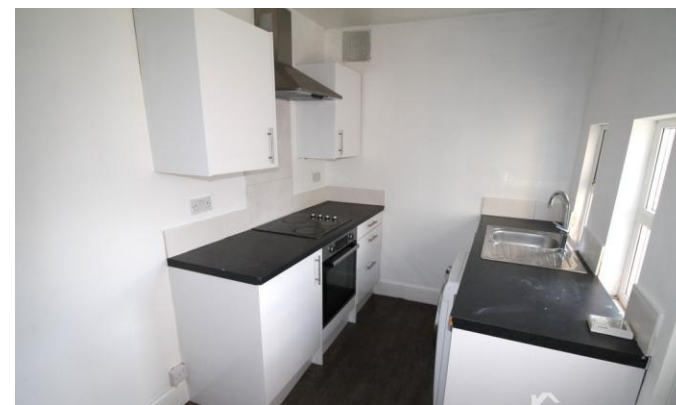
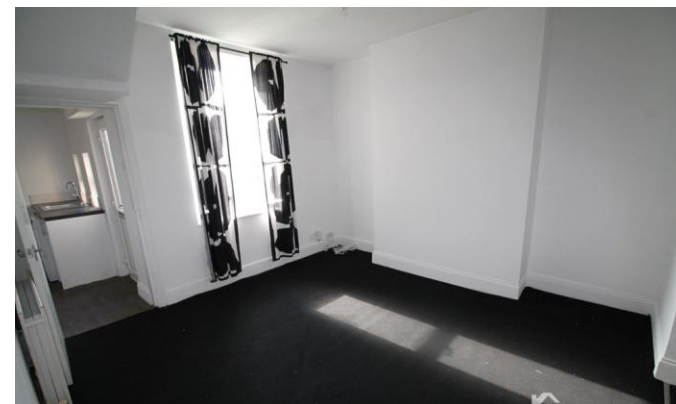


13 Robinson Street

Consett
County Durham
DH8 5TR

£720 pcm

Three Bedrooms
End Terraced House
Gas Central Heating & Double Glazing
Ideally For a Variety of Tenants
Close to Local Amenities & Transport
Links
Available Now





Safe & Secure Properties are delighted to welcome to the market this spacious three-bedroom end-terrace property located on Robinson Street, Consett. Situated within close proximity to local shops, schools, and everyday amenities, the property also benefits from excellent transport links to surrounding areas. Offering generous living accommodation throughout, this property would be ideal for a variety of tenants.

LOUNGE

12' 2" x 9' 10" (3.73m x 3.01 m) Double glazed bay window to rear, coving to ceiling, television point, radiator, stone effect fireplace.

LOUNGE/DINER

12' 5" x 12' 11" (3.79m x 3.94m) Double glazed window to front, telephone point, television point, radiator.

KITCHEN

6' 8" x 10' 7" (2.05m x 3.24m) Double glazed window to side, fitted wall & base units with coordinating work surfaces, built in electric oven and hob, space for washing machine, single drainer sink, extractor hood, ducted air vent, radiator, tiled walls, double glazed window to side.

UTILITY ROOM

Fitted wall & base units.



FIRST FLOOR LANDING

Coving to ceiling, sky light, access to roof space.

MASTER BEDROOM

12' 11" x 9' 6" (3.95 m x 2.90m) Double glazed window to front, picture rail, radiator, fireplace.

BEDROOM 2

12' 11" x 9' 4" (3.95m x 2.87m) Double glazed window to rear, picture rail, radiator.

BEDROOM 3

6' 3" x 9' 9" (1.92m x 2.98m) Double glazed window to rear, radiator.

FIRST FLOOR BATHROOM

White 3 piece suite comprising of a panelled bath with shower over, pedestal wash hand basin, low level w.c, extractor fan, radiator, boiler, double glazed window to side.

FRONT GARDEN

Mainly paved, fenced boundaries, off-street parking.

REAR GARDEN

Fenced Boundaries, gravelled area, paved area.



Local Authority
Council Tax Band
EPC Rating

Durham County Council

E

Houghton Le Spring

24-25 Westbourne Terrace
Houghton Le Spring
Tyne And Wear
DH4 4QT

Contact

0191 3854477
info@safeandsecureproperties.c
o.uk
safeandsecureproperties.co.uk

Agents Note: Whilst every care has been taken to prepare these particulars, they are for guidance purposes only. All measurements are approximate and are for general guidance purposes only and whilst every care has been taken to ensure their accuracy, they should not be relied upon and potential buyers/tenants are advised to recheck the measurements.