



Hazel Close offers in the region of £350,000

- Detached Bungalow
- Driveway & Garage
- Two Attic Rooms
- Sought After Area
- Viewing Recommended
- EPC Rating: D



 3  1  3



About the property

Packed with Potential in Newton, Porthcawl

Located in the highly sought-after Newton area of Porthcawl, this deceptively spacious 3-bedroom bungalow offers an exciting opportunity for buyers looking to create their dream home.

Boasting a versatile and functional floor plan, the property features multiple reception rooms, generous living space, and useful attic rooms offering endless possibilities for home offices, hobby rooms, guest accommodation or additional storage.

Internally the property comprises entrance hall, lounge, kitchen (with under floor heating), three bedrooms and bathroom to the ground floor. To the first floor are two further attic rooms. The property is situated on a generous sized plot with front garden and driveway to side leading to garage plus an enclosed garden to rear offering a range of fruit trees. Whether you're drawn by its rich history, coastal walks, or village charm



Accommodation

Entrance Hall

19' 2" max x 9' 10" max (5.84m max x 3.00m max)

Lounge/Diner

20' 5" x 12' 6" (6.22m x 3.81m)

Kitchen

Attic Room Two

12' 9" max x 9' 1" max (3.89m max x 2.77m max)

12' 5" x 9' 8" (3.78m x 2.95m)

Lean To

Bedroom

10' 2" x 9' 8" (3.10m x 2.95m)

Bedroom

11' 11" x 10' 4" (3.63m x 3.15m)

Bathroom

Study Area

First Floor

Attic Room One

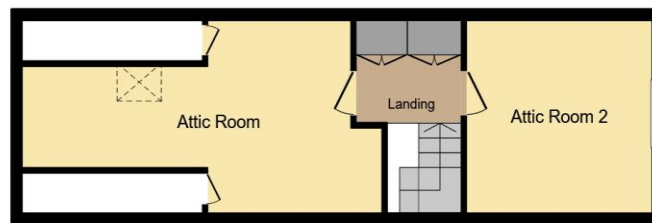
01656 771600

porthcawl@peteralan.co.uk

Floorplan



Ground Floor



First Floor

This floor plan is for illustrative purposes only. It is not drawn to scale. Any measurements, floor areas (including any total floor area), openings and orientation are approximate. No details are guaranteed, they cannot be relied upon for any purpose and they do not form part of any agreement. No liability is taken for any error, omission or misstatement. A party must rely upon its own inspection(s). Powered by www.focalagent.com

Important Information

Note while we endeavour to make our sales details accurate and reliable, if there is any point which is of particular interest to you, please contact the office and we will be pleased to confirm the position for you. We have not personally tested any apparatus, equipment, fixtures, fittings or services and cannot verify they are in working order or fit for their purposes. Nothing in these particulars is intended to indicate that carpets or curtains, furnishings or fittings, electrical goods (whether wired or not). Gas fires or light fittings or any other fixtures not expressly included form part of the property offered for sale. This computer generated Floorplan, if applicable, is intended as a general guide to the layout and design of the property. It is not to scale and should not be relied upon for dimensions. Tenure: We cannot confirm the tenure of the property as we have not had access to the legal documents. The buyer is advised to obtain verification from their solicitor or surveyor.

Peter Alan Limited is registered in England and Wales under company number 2073153. Registered Office is Cumbria House, 16-20 Hockliffe Street, Leighton Buzzard, Bedfordshire, LU7 1GN. VAT Registration Number is 500 2481 05. For activities relating to regulated mortgages and non-investment insurance contracts, Peter Alan Limited is an appointed representative of Connells Limited which is authorised and regulated by the Financial Conduct Authority. Connells Limited's Financial Services Register number is 302221. Most buy-to-let

