



Sunnyside

£430,000

- Detached three-bedroom extended cottage
- Additional study / home office
- Two reception rooms with traditional flooring
- Double garage and two private driveways
- Sought-after Maudlam village location
- Generous end plot with significant potential
- EPC Rating: C



 3  1  2



About the property

This detached three-bedroom extended cottage, complete with a study, occupies a generous end plot offering huge potential both internally and externally-ideal for those looking to create a true forever home. The property features two well-proportioned reception rooms with traditional flooring, complemented by newly installed windows that allow an abundance of natural light throughout.

Externally, the home benefits from a double garage and a private driveway, while the expansive plot provides scope for further enhancement or development, subject to the necessary consents. Situated in the highly sought-after village of Maudlam, the property enjoys scenic views, access to nature walks, and a peaceful rural setting while remaining conveniently connected.

Please note satellite outlining is just a guide.



Accommodation

Lounge

11' 2" x 10' 6" (3.40m x 3.20m)

17' 1" x 13' 1" (5.21m x 3.99m)

Dining Room

14' 5" x 10' 6" (4.39m x 3.20m)

Kitchen

13' 1" x 10' 8" (3.99m x 3.25m)

Utility Room

9' 2" x 6' 10" (2.79m x 2.08m)

Bedroom One

18' 1" x 13' 1" (5.51m x 3.99m)

Bedroom Two

13' 1" x 10' 6" (3.99m x 3.20m)

Bedroom Three

14' 9" x 13' 1" (4.50m x 3.99m)

Study

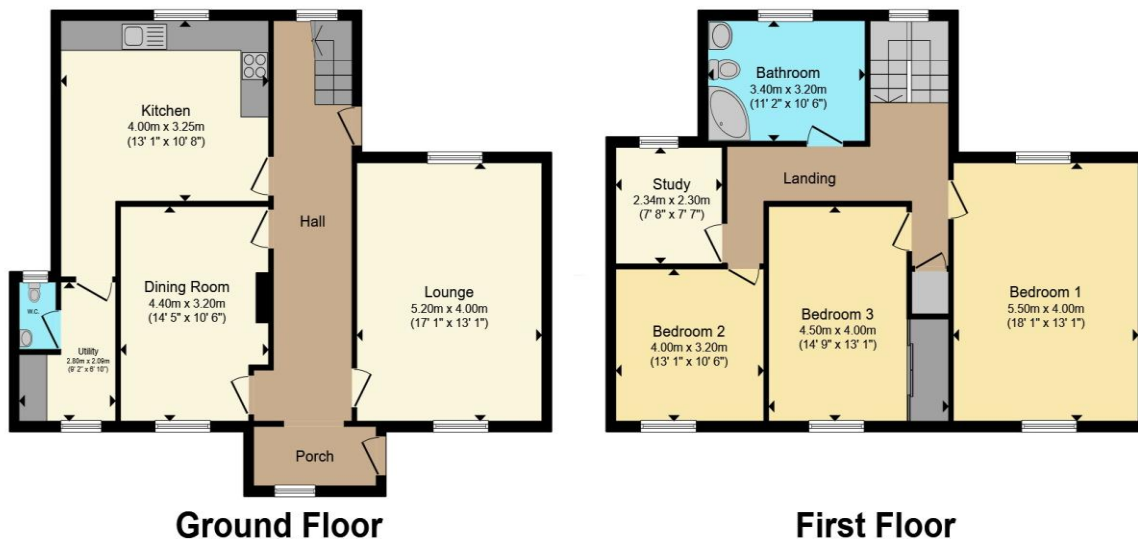
7' 8" x 7' 7" (2.34m x 2.31m)

Bathroom

01656 771600

porthcawl@peteralan.co.uk

Floorplan



Total floor area 152.0 m² (1,636 sq.ft.) approx

This floor plan is for illustrative purposes only. It is not drawn to scale. Any measurements, floor areas (including any total floor area), openings and orientation are approximate. No details are guaranteed, they cannot be relied upon for any purpose and they do not form part of any agreement. No liability is taken for any error, omission or misstatement. A party must rely upon its own inspection(s). Powered by www.propertybox.io

pa peter
alan

Important Information

Note while we endeavour to make our sales details accurate and reliable, if there is any point which is of particular interest to you, please contact the office and we will be pleased to confirm the position for you. We have not personally tested any apparatus, equipment, fixtures, fittings or services and cannot verify they are in working order or fit for their purposes. Nothing in these particulars is intended to indicate that carpets or curtains, furnishings or fittings, electrical goods (whether wired or not). Gas fires or light fittings or any other fixtures not expressly included form part of the property offered for sale. This computer generated Floorplan, if applicable, is intended as a general guide to the layout and design of the property. It is not to scale and should not be relied upon for dimensions. Tenure: We cannot confirm the tenure of the property as we have not had access to the legal documents. The buyer is advised to obtain verification from their solicitor or surveyor.

Peter Alan Limited is registered in England and Wales under company number 2073153, Registered Office is Cumbria House, 16-20 Hockliffe Street, Leighton Buzzard, Bedfordshire, LU7 1GN. VAT Registration Number is 500 2481 05. For activities relating to regulated mortgages and non-investment insurance contracts, Peter Alan Limited is an appointed representative of Connells Limited which is authorised and regulated by the Financial Conduct Authority. Connells Limited's Financial Services Register number is 302221. Most buy-to-let

pa peter
alan