

propertyladder



Mundesley Road, North Walsham, NR28

A Beautifully Updated Four Bedroom Detached Home!

GUIDE PRICE **£475,000** FREEHOLD



BRITISH
PROPERTY
AWARDS

2025



GOLD WINNER

ESTATE AGENT
IN NORWICH
(NR10-16)

SPACIOUS COMFORT IN A TUCKED-AWAY SETTING!

The accommodation begins with a welcoming entrance hall which creates an immediate sense of space and quality. A ground floor WC adds practicality, while the spacious living room provides a bright and comfortable main reception space ideal for relaxing or entertaining.

A particular highlight of the home is the stylish modern kitchen, which flows openly into the dining area to create a sociable heart of the house perfectly suited to contemporary lifestyles. The kitchen itself is well-appointed with modern units, quality work surfaces and integrated appliances, while a matching utility room provides additional storage and workspace.

Upstairs, the property offers four well-proportioned bedrooms. The generous principal bedroom benefits from a stylish ensuite shower room, while the remaining bedrooms are all of a good size and served by a modern family bathroom fitted with a contemporary suite.



“ rear garden offers an excellent degree of privacy ”



Overview

- Detached Modern Family Home
- Private Loke Position Off Mundesley Road
- Updated And Improved Throughout
- Air Conditioning Installed
- Stylish Open-Plan Kitchen Dining Room
- Matching Utility Room
- Four Well-Proportioned Bedrooms
- Ensuite To Principal Bedroom
- Detached Double Garage With Electric Roller Door
- Generous Private Rear Garden





Location

North Walsham is one of North Norfolk's most popular and well-served market towns, offering an excellent blend of convenience, community and accessibility. The town provides a wide range of amenities including supermarkets, independent shops, cafés, schools, leisure facilities and healthcare services, all within easy reach. Rail links offer direct access towards Norwich and the wider region, while the stunning North Norfolk coastline, including Mundesley and Cromer, is just a short drive away. The combination of strong amenities, nearby countryside and easy access to both the coast and Norwich makes North Walsham an increasingly desirable place to call home.

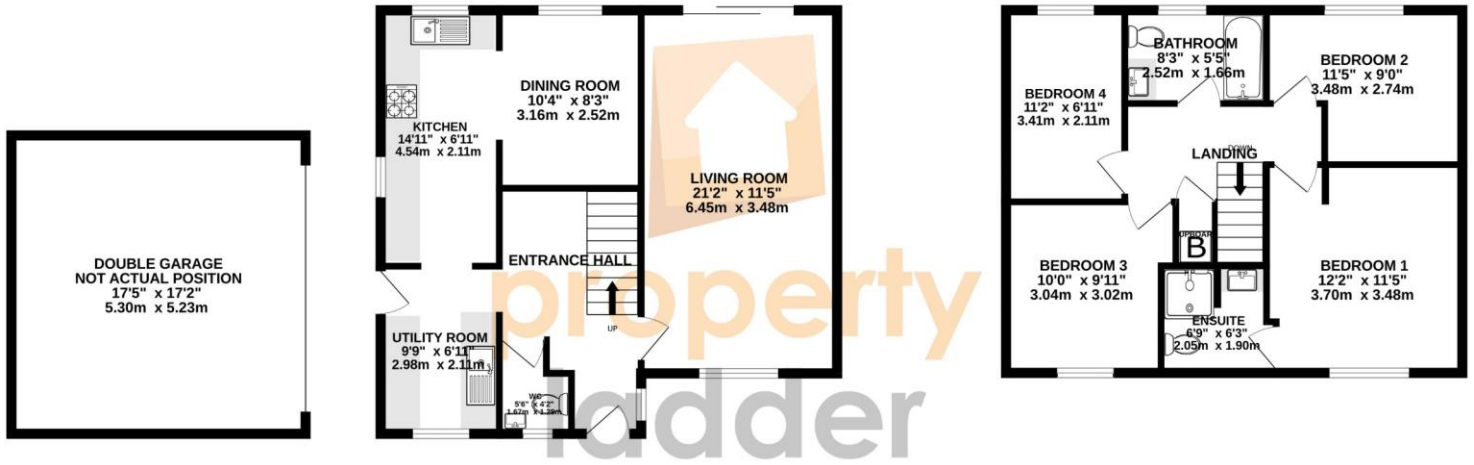


Outside

Outside, the property continues to impress. To the front there is ample off-road parking alongside a substantial detached double garage featuring a wide electric roller door. The rear garden offers an excellent degree of privacy and includes a lawned area alongside a patio perfectly suited to outdoor dining and entertaining.

GROUND FLOOR
914 sq.ft. (84.9 sq.m.) approx.

1ST FLOOR
561 sq.ft. (52.1 sq.m.) approx.



TOTAL FLOOR AREA : 1475 sq.ft. (137.0 sq.m.) approx.

Whilst every attempt has been made to ensure the accuracy of the floorplan contained here, measurements of doors, windows, rooms and any other items are approximate and no responsibility is taken for any error, omission or mis-statement. This plan is for illustrative purposes only and should be used as such by any prospective purchaser. The services, systems and appliances shown have not been tested and no guarantee as to their operability or efficiency can be given.
Made with Metropix ©2026

FULL EPC AVAILABLE UPON REQUEST

Score	Energy rating	Current	Potential
92+	A		
81-91	B		89 B
69-80	C	69 C	
55-68	D		
39-54	E		
21-38	F		
1-20	G		

COUNCIL TAX BAND: D

LOCAL AUTHORITY: NORTH NORFOLK COUNCIL

SERVICES CONNECTED: MAINS WATER, MAIN DRAINS, MAINS ELECTRICITY, GAS CENTRAL HEATING

Selling your home?

If you are considering selling your home, please contact us for your no obligation free market appraisal.

IMPORTANT NOTICE: Property Ladder, their clients and any joint agents give notice that: 1. They are not authorised to make or give any representations or warranties in relation to the property either here or elsewhere, either on their own behalf or on behalf of their client or otherwise. They assume no responsibility for any statement that may be made in these particulars. These particulars do not form part of any offer or contract and must not be relied upon as statements or representations of fact. 2. Any areas, measurements or distances are approximate. The text, photographs and plans are for guidance only and are not necessarily comprehensive. It should not be assumed that the property has all necessary planning, building regulation or other consents and Property Ladder have not tested any services, equipment or facilities. Purchasers must satisfy themselves by inspection or otherwise.