



MILE



Vertic Apartments, NW10, London £2,600 pcm

Welcome to Vertic Apartments, NW10.

A beautifully presented two-bedroom ground floor flat, newly refurbished throughout and finished to a fantastic standard.

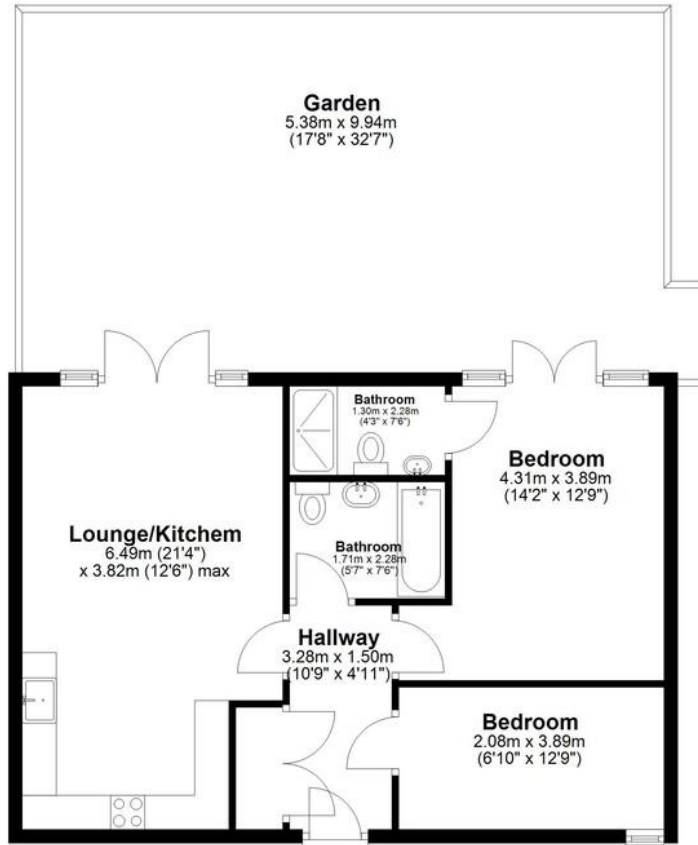
This bright and airy property offers well-proportioned living accommodation, a modern finish throughout, and direct access to a private garden, making it ideal for professionals, couples, or small families.

Ideally situated in an excellent location, the property benefits from good transport links and is within close proximity to a range of local shops, cafés, and everyday amenities.

- Two bedrooms
- Newly refurbished
- Excellent Location
- Fantastic Condition
- Good Transport Links
- Close to local shops and amenities
- Bright and Airy
- Viewing recommended
- Ground Floor Flat
- Garden

Ground Floor

Approx. 111.5 sq. metres (1199.8 sq. feet)



Total area: approx. 111.5 sq. metres (1199.8 sq. feet)

This floor plan has been created by a third party and should be used as a general outline for guidance only. Any areas, measurements or distances quoted are approximate and any intending purchaser or lessee should satisfy themselves by inspection, searches, enquiries and/or full survey as to the correctness of each statement. We accept no responsibility or liability for any loss whatsoever that may arise as a result of this plan and the information contained within.

© @modephotouk | www.modephoto.co.uk
Plan produced using PlanUp. □

Flat 2 Harlesden Gardens

MONEY LAUNDERING REGULATIONS 2003: Intending purchasers will be asked to produce identification documentation at a later stage and we would ask for your co-operation in order that there will be no delay in agreeing the sale.

General: While we endeavour to make our sales particulars fair, accurate and reliable, they are only a general guide to the property and, accordingly, if there is any point which is of particular importance to you, please contact the office and we will be pleased to check the position for you, especially if you are contemplating travelling some distance to view the property.

Measurements: These approximate room sizes are only intended as general guidance. You must verify the dimensions carefully before ordering carpets or any built-in furniture.

Services: Please note we have not tested the services or any of the equipment or appliances in this property, accordingly we strongly advise prospective buyers to commission their own survey or service reports before finalising their offer to purchase.