



04

— CHURCH CLOSE —

# Beautifully refurbished family home with smart technology, luxury finishes and versatile accommodation.

## SIX-BEDROOM RESIDENCE

Nestled in Church Close, N20, a quiet and highly sought-after cul-de-sac this beautifully refurbished family home has been meticulously renovated throughout and is presented in immaculate, turnkey condition. Secured by an electric gate entrance and boasting private off-street parking, the property offers approximately 2,427 sq ft of exceptionally well-planned accommodation, including a substantial outbuilding. This home effortlessly combines elegant living space with cutting-edge technology and luxurious contemporary finishes.

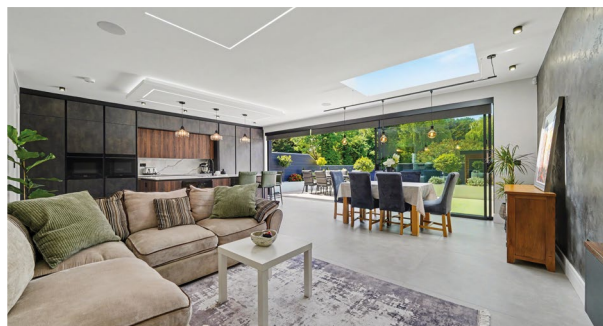


### OVERVIEW:

- 6 Bedrooms
- 3 Bathrooms
- Freehold family house
- 2 reception rooms and additional study
- A quiet no through, residential road
- Modern open plan kitchen and living room
- Smart home with Lutron lighting
- Off street gated parking
- Close to local amenities and greenery
- Easy access to M1, M25 & A406

The ground floor is centred around a stunning open-plan kitchen and dining area, creating the perfect hub for everyday living and entertaining. The bespoke German-designed kitchen is fitted with a comprehensive range of premium cabinetry and complemented by the latest fully integrated Siemens appliances.

High-quality Italian porcelain tiling and beautiful solid wood flooring flow throughout the home, while large openings to the rear garden create a seamless connection between indoor and outdoor living. A separate reception room provides a more formal setting for relaxation, while a study, utility room, guest cloakroom and welcoming entrance hall complete the ground floor accommodation.



The first floor offers excellent family accommodation, comprising four well-proportioned bedrooms, including a luxurious principal suite with en-suite facilities. The bathrooms have been finished to an exceptional standard, featuring premium Grohe fittings and fixtures together with elegant Duravit sanitaryware, basins and baths. A further family bathroom serves the remaining bedrooms, and the layout has been thoughtfully designed to maximise both space and natural light.



The second floor provides two additional bedrooms together with further ancillary storage space, making it ideal for larger families, guest accommodation, or flexible use as home offices, hobby rooms or dressing areas. Throughout the property, the emphasis on quality and comfort is evident. The home benefits from underfloor heating throughout, full air conditioning, a sophisticated Lutron lighting system, and an integrated Sonos sound system, creating a truly modern smart-home environment with effortless control and exceptional day-to-day living.










Outside, the property enjoys a generous rear garden featuring a dedicated outdoor BBQ area, perfect for al fresco dining and entertaining during the warmer months. To the rear of the garden sits a substantial outbuilding/outhouse, offering excellent versatility as a gym, home office, studio, games room or additional storage. Having been newly renovated throughout to an outstanding specification, this exceptional home offers stylish contemporary interiors, extensive family accommodation across three floors, premium fixtures and finishes, and superb outdoor amenities in one of North London's most desirable residential locations.



## Valuable information

---

### EDUCATION:

-  Oakleigh School & Acorn Assessment Centre  
0.2 miles
-  Friern Barnet School  
0.6 miles
-  St Andrew The Apostle Greek Orthodox School  
0.4 miles
-  Wren Academy Finchley  
0.7 miles
-  Sacred Heart Roman Catholic Primary School  
0.5 miles

---

### TRANSPORTATION:

Transport connections are excellent, with Totteridge & Whetstone Underground Station (Northern Line) providing direct access into Central London, while Oakleigh Park Station offers convenient Great Northern rail services into Moorgate and King's Cross. The area is also well served by local bus routes and enjoys easy access to the A1, A406 North Circular and M25, making it an ideal location for commuters and families seeking a balance between suburban tranquillity and city convenience.



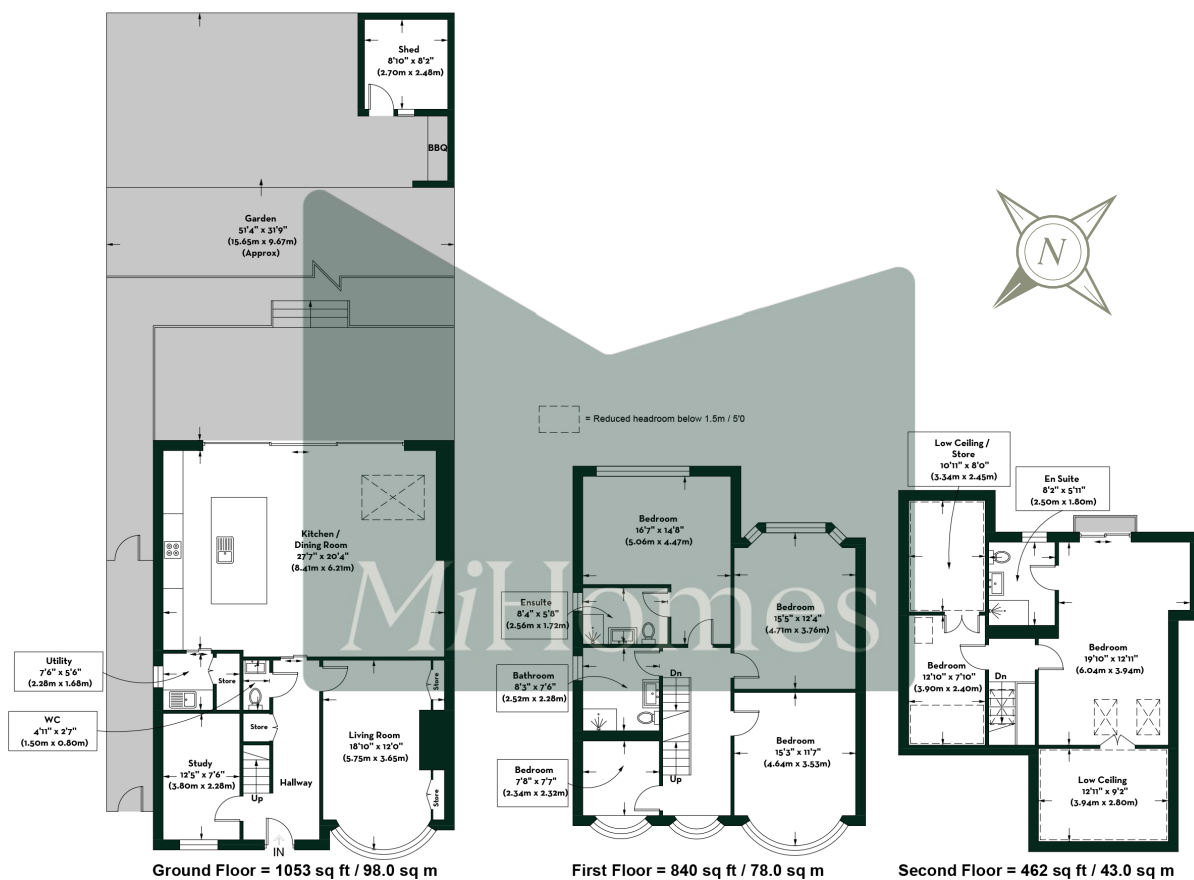
---

### LOCATION:

Church Close is a quiet and highly sought-after cul-de-sac in the heart of Whetstone, one of North London's most popular family neighbourhoods. The area offers an excellent selection of boutique shops, cafés, restaurants and supermarkets centred around Whetstone High Road and nearby Totteridge. Families are particularly drawn to the area for its excellent choice of highly regarded state and independent schools, as well as the abundance of green open spaces including Totteridge Green, Swan Lane, and Friary Park.



Floorplan:



4 CHURCH CLOSE, WHETSTONE, N20 0JU

- EPC rating: C
- Council tax band: G
- Freehold
- Approximate gross internal floor area: 2355 sq ft / 219 sq m
- Outbuilding: 72 sq ft / 43 sq m
- Total: 2427 sq ft / 226 sq m

This plan is for layout purposes only. Not drawn to scale unless stated. Window and door opening are approximate. Whilst every care is taken in the preparation of this plan, please check all dimensions, shapes and compass bearings before making any decisions reliant upon them. (ID 1304837)



PRIME  
*MiHomes*

5 Reasons you can trust us to  
secure your new home:

01

Dedicated whatsapp  
group for effective  
sales progression

02

Low fall through rate  
(just 8%) compared to a  
national average of over 35%

03

An average of 9 weeks  
between sale agreed  
and completion

04



Outstanding client service  
(4.9/5 stars from over 470  
Google reviews)

05

Over 80% of business  
generated solely by  
recommendations

CONTACT:



+44 (0) 20 7323 9574



hello@mi-homes.co.uk



mi-homes.co.uk



9 Onslow Parade, Hampden Square,  
Southgate, N14 5JN

SOCIAL:



mi.homes



mihomespropertyagents

#youdeservemore

We would love to help you make this  
dream a reality. Let's talk.