



Bwlch Road, offers over £325,000

- Four Bedrooms!
- Driveway
- Sought After Location
- Detached house!
- EPC Rating: D



 4  1  2



About the property

Situated on the popular Bwlch Road in Cimla, this well-proportioned four-bedroom detached home offers spacious and versatile family accommodation in a convenient location. With fantastic links to local amenities throughout Neath Town Centre, including public transport via bus & train, high street stores and well renowned schools including Gnoll Primary, Crynallt Primary and Cefn Saeson Community Comprehensive School. Also well situated for commuters providing great access to the M4 corridor via the A465.

The home is approached via a double driveway and front lawn with hedges surrounding the home creating a private setting. The accommodation comprises a welcoming hallway with stairs to the landing and a door through to a spacious lounge, separate dining space, fitted kitchen and conservatory.

Upstairs, the property offers four bedrooms and a family bathroom, making it an ideal choice for growing families.

To the rear, the property boasts a sizable enclosed rear garden, providing a safe and private space for outdoor enjoyment.

Viewings are recommended to fully appreciate the space and potential on offer!

Accommodation

Entrance Hallway

Lounge

13' x 14' 8" (3.96m x 4.47m)

Dining Room

12' 8" x 9' 2" (3.86m x 2.79m)

Kitchen

12' 5" x 9' 9" (3.78m x 2.97m)

Conservatory

11' 9" x 8' 4" (3.58m x 2.54m)



Cloakroom

Bedroom Four

8' 7" x 5' 9" (2.62m x 1.75m)

Landing

Bathroom

Bedroom One

14' 9" x 10' 3" (4.50m x 3.12m)

Front & Rear Gardens

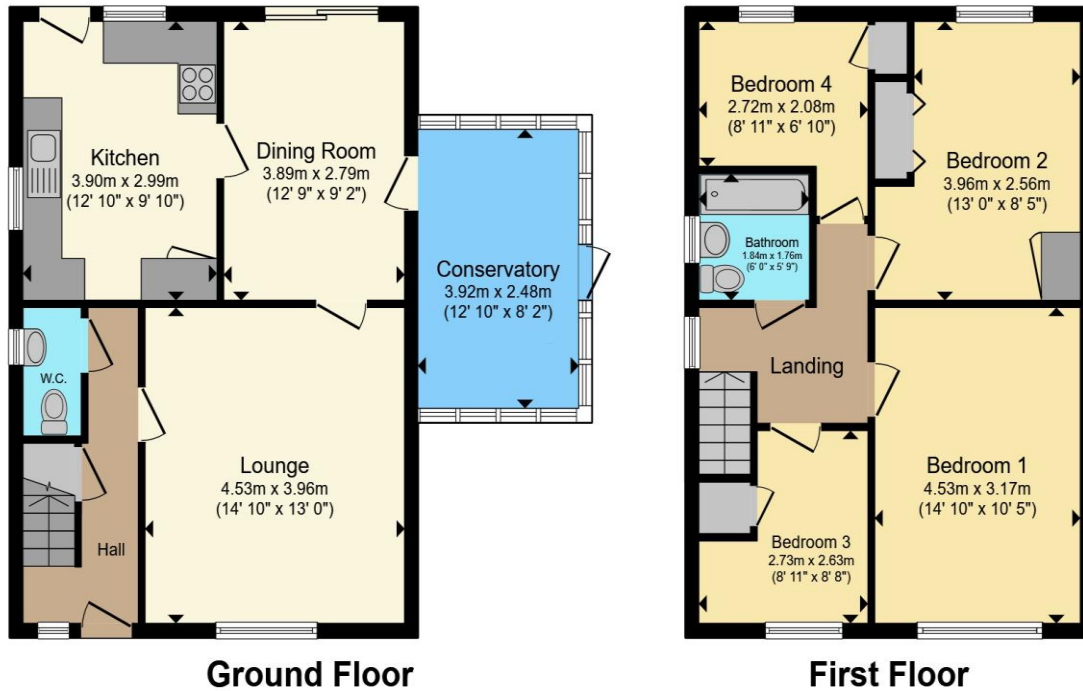
Bedroom Two

13' x 8' 4" (3.96m x 2.54m)

Bedroom Three

8' 9" x 6' 8" (2.67m x 2.03m)

Floorplan



Total floor area 112.2 m² (1,208 sq.ft.) approx

This floor plan is for illustrative purposes only. It is not drawn to scale. Any measurements, floor areas (including any total floor area), openings and orientation are approximate. No details are guaranteed, they cannot be relied upon for any purpose and they do not form part of any agreement. No liability is taken for any error, omission or misstatement. A party must rely upon its own inspection(s). Powered by www.propertybox.io

Important Information

Note while we endeavour to make our sales details accurate and reliable, if there is any point which is of particular interest to you, please contact the office and we will be pleased to confirm the position for you. We have not personally tested any apparatus, equipment, fixtures, fittings or services and cannot verify they are in working order or fit for their purposes. Nothing in these particulars is intended to indicate that carpets or curtains, furnishings or fittings, electrical goods (whether wired or not). Gas fires or light fittings or any other fixtures not expressly included form part of the property offered for sale. This computer generated Floorplan, if applicable, is intended as a general guide to the layout and design of the property. It is not to scale and should not be relied upon for dimensions. Tenure: We cannot confirm the tenure of the property as we have not had access to the legal documents. The buyer is advised to obtain verification from their solicitor or surveyor.