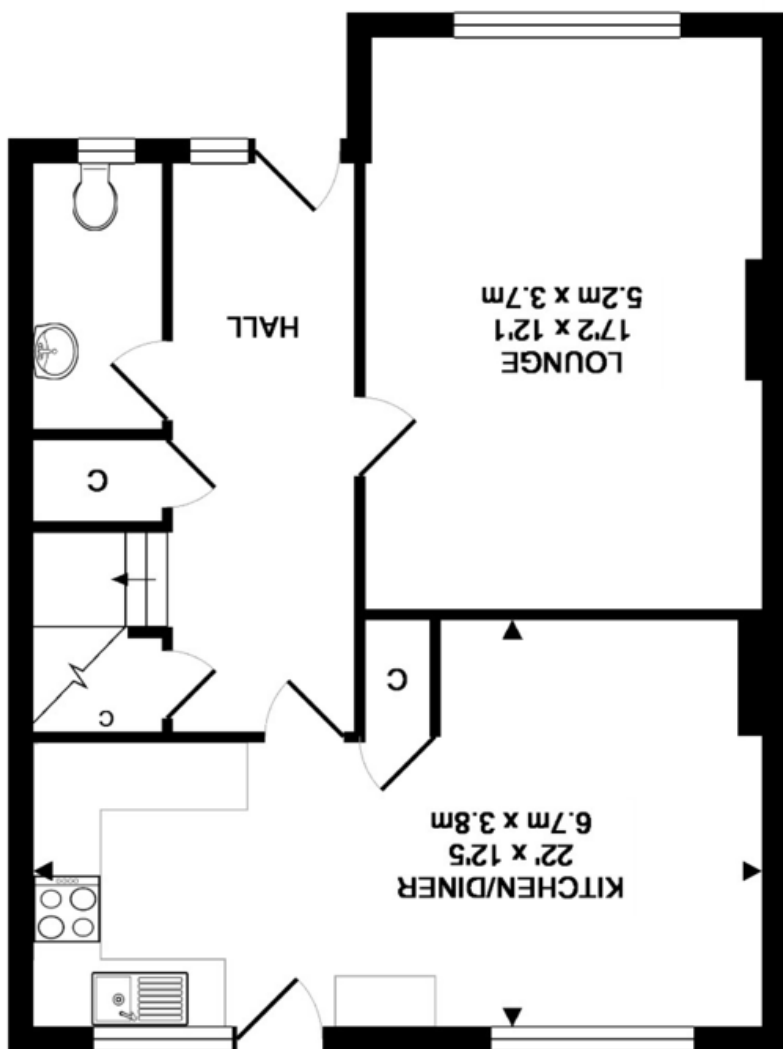


Agents Note: Whilst every care has been taken to prepare these sales particulars, they are for guidance purposes only. All measurements are approximate and for general guidance purposes only and whilst every care has been taken to ensure their accuracy, they should not be relied upon and potential buyers are advised to recheck the measurements.



GROUND FLOOR
APPROX. FLOOR
AREA 607 SQ.FT.
(56.4 SQ.M.)

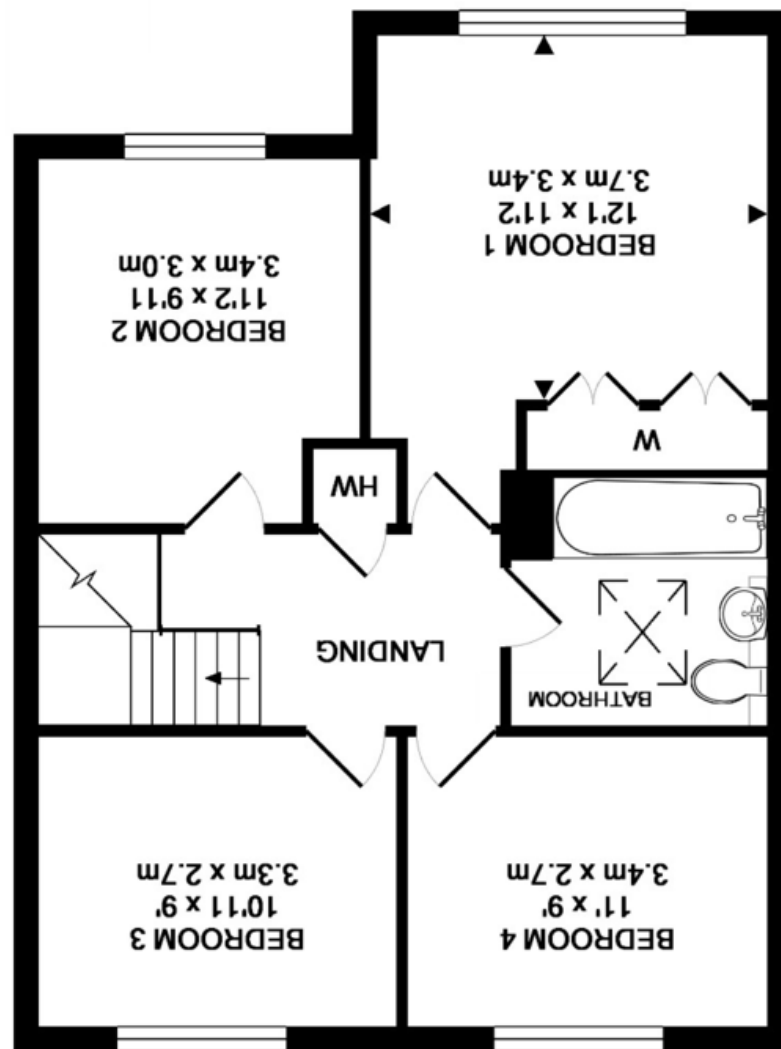


TOTAL APPROX. FLOOR AREA 1220 SQ.FT. (113.4 SQ.M.)

The floor plan is provided in good faith and believed to be accurate, but location and sizes of rooms, doors and windows are provided for guidance only and as such should not be relied upon. It is made with Metropix @2017



1ST FLOOR
APPROX. FLOOR
AREA 613 SQ.FT.
(56.9 SQ.M.)



37 Cresswells, Corsham, Wiltshire, SN13 9NJ

DAVID
INGRAM
RESIDENTIAL SALES

37 Cresswells, Corsham, Wiltshire, SN13 9NJ

- Four double bedrooms
- Well presented throughout
- Bathroom with modern white suite
- Superb kitchen/diner
- UPVC double glazing
- Good sized gardens
- Garage

OIEO - £285,000



Situation and Description

A very well presented and deceptively spacious family home situated in a popular cul de sac with good sized gardens and a garage.

The property offers accommodation comprising entrance hall with cloakroom off, sitting room with feature fireplace, spacious kitchen/diner with modern units, four double bedrooms and a bathroom with white suite.

Externally there are good sized, predominately lawned gardens to the front and rear. The rear garden is well enclosed and enjoys a good deal of privacy.

Garage

Single unit with up and over door situated in a block at the end of the terrace.

Cresswells is a popular cul de sac which was built in the 1970's and is situated within easy walking distance of the local schools, and community campus incorporating the swimming pool, library, cafe and other leisure facilities. The picturesque high street is only a short walk further on and bus services to bath and Chippenham pick up close by on the Valley road.

EPC Rating - D



Directions

From our office on the High Street turn right into the Pickwick Road, proceed over the first mini roundabout and at the second mini roundabout turn left into Valley Road. Take the second left turning into Cresswells, where the property can be found on the left hand side.