

stuart  
thomas



- NO ONWARD CHAIN
- IN NEED OF REFURBISHMENT
- GOOD SIZE KITCHEN/DINER
- SPACIOUS LOUNGE

36 Chaucer Close, Tilbury, Essex, RM18 8EG

£215,000

PUT YOUR OWN STAMP ON THIS ONE! In need of REFURBISHMENT is this MID TERRACE three bedroom house with a GARDEN and OFF STREET PARKING. Being sold with NO ONWARD CHAIN CALL NOW to Make an appointment to come along to our OPEN HOME on SATURDAY 16TH JUNE.



## Property Description

### ENTRANCE LOBBY

Double glazed entrance door leads to the entrance lobby. Further double glazed door leads to the:-

### ENTRANCE HALL

Stairs to the first floor. Door to :-

### LOUNGE

16' 10" x 10' 7" (5.13m x 3.23m) Double glazed window to the front. Electric heater. Understairs storage cupboard. Feature yorkstone fireplace.

### KITCHEN/DINER

14' 11" x 8' 10" (4.55m x 2.69m) Fitted with units at eye and base level. Single drainer stainless steel sink unit with mixer tap over. Space and plumbing for a washing machine. Double glazed door and window to the rear garden.

### BEDROOM ONE

14' 6" x 8' 5" (4.42m x 2.57m) Double glazed window to the front. Electric panel heater.

### BEDROOM TWO

11' 7" x 7' (3.53m x 2.13m) Double glazed window to the rear. Electric panel heater.

### BEDROOM THREE

11' 5" x 6' 2" (3.48m x 1.88m) Double glazed window to the front. Electric panel heater. Bulkhead.

### BATHROOM

3 piece suite comprises a low level wc pedestal wash hand basin and panelled bath. Double glazed obscure window to





the rear.

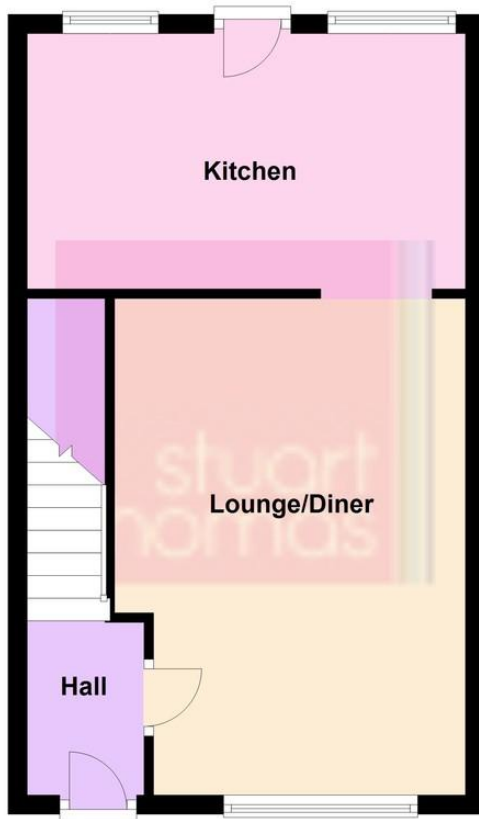
OFF STREET PARKING

To the front of the property.

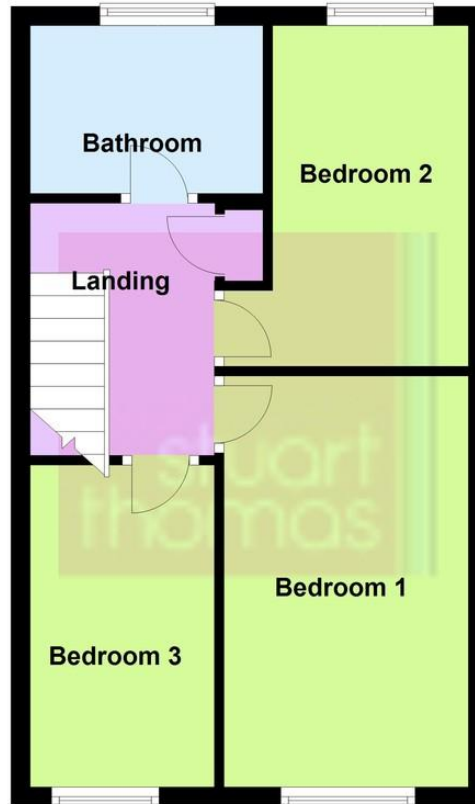
REAR GARDEN

In excess of 45' in need of some attention.

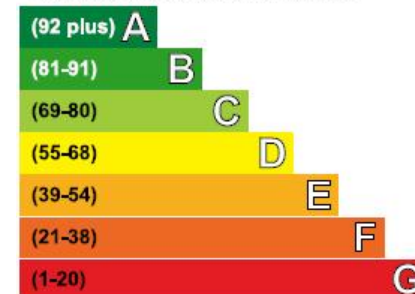
## Ground Floor



## First Floor



Very energy efficient - lower running costs



Current	Potential
63	87

294 Kiln Road, Benfleet, Essex,  
SS7 1QT

stestates.co.uk  
01702 558110  
info@stestates.co.uk

Agents Note: Whilst every care has been taken to prepare these sales particulars, they are for guidance purposes only. All measurements are approximate and for general guidance purposes only and whilst every care has been taken to ensure their accuracy, they should not be relied upon and potential buyers are advised to recheck the measurements