



Upper Cloister Walk
Exminster £185,000

West of EXE

Upper Cloister Walk

Exminster £185,000

Located in beautiful inner Cloisters area of Devington Park is this light and spacious first floor two bedroom apartment. This well presented property with high ceilings and tall windows comprises of; large lounge/dining room, modern fitted kitchen, two double bedrooms and shower room. The property also benefits from the use of all the communal grounds and facilities, plus allocated and visitors parking.

Light and spacious first floor apartment | Two double bedrooms | Large L-shaped lounge/dining room | Modern fitted kitchen | Shower room with white suite | Use of communal grounds and facilities | Allocated and visitors parking | Use of fitness room | Ideal first home or investment property

PROPERTY DETAILS:

APPROACH

Front door to apartment 7 and entrance hallway. Outside light.

ENTRANCE HALLWAY

Attractive entrance hallway with high coved ceiling. Central heating radiator. Entry phone. Door to airing cupboard housing gas combi boiler and shelving. Door to high level loft cupboard. Doors to lounge/dining room, bedrooms and shower room.

LOUNGE/DINING ROOM

19' 5" x 16' 4" (5.92m x 4.98m) (narrowing to 9'2" (2.74m)) Light and spacious L-shape double aspect room with two tall arch top sash windows to front aspect and tall arch top window to rear aspect with outlooks over the grounds and gardens. High coved ceiling and picture rail. Three central heating radiators. Fitted ornate fireplace mantle. Part wood laminate flooring to dining area. TV and telephone points. Arch to kitchen.



KITCHEN

9' 2" x 6' 8" (2.79m x 2.03m) Modern fitted kitchen with range of base and wall units in light wood effect finish. Roll-edge worktop with tiled surround and inset stainless steel sink. Integral double electric oven and gas hob with extractor hood over. Further integral appliances comprising; fridge, freezer, dishwasher and washer/dryer. Extractor fan. Recess spotlighting.

BEDROOM 1

13' 2" x 10' 8" (4.01m x 3.25m) (max) Spacious double bedroom with high coved ceiling and picture rail. Tall arch top window to rear aspect with outlook over the gardens and grounds. Central heating radiator. Range of fitted bedroom furniture in light wood effect finish comprising; wardrobes and high level storage cupboards. TV and telephone points.

BEDROOM 2

11' 10" x 8' 10" (3.61m x 2.69m) Further spacious double bedroom with high coved ceiling. Arch top window to rear aspect with outlook over the gardens and grounds. Central heating radiator.

SHOWER ROOM

8' 3" x 6' 3" (2.51m x 1.91m) Large arch top sash window to front aspect. White suite comprising; low level w.c., pedestal hand wash basin with mirror and feature lighting over, and large corner tiled shower enclosure with glass sliding doors and electric shower over. Extractor fan. Central heating radiator. Recess spotlight. Large fitted mirror.

OUTSIDE

PARKING

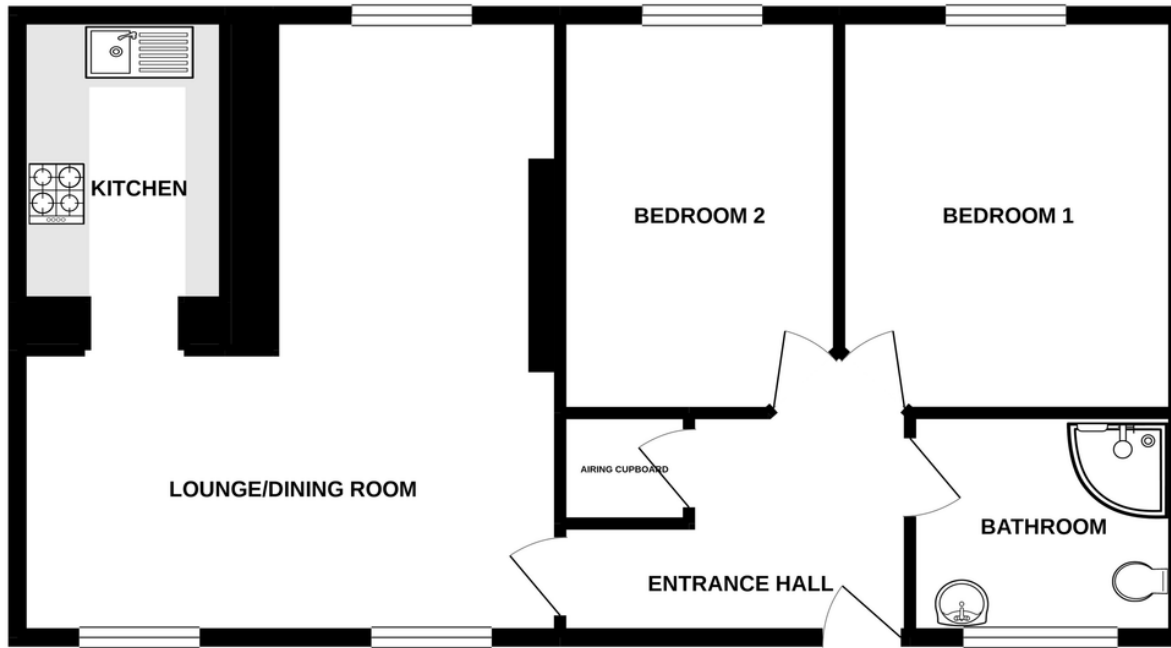
Allocated parking space and ample visitors parking located at the front of the development.

COMMUNAL FACILITIES

Use of wonderful communal grounds including large pond with seating area, fitness room, drying room and bike store.



GROUND FLOOR



Epc to follow

Whilst every attempt has been made to ensure the accuracy of the floorplan contained here, measurements of doors, windows, rooms and any other items are approximate and no responsibility is taken for any error, omission or mis-statement. This plan is for illustrative purposes only and should be used as such by any prospective purchaser. The services, systems and appliances shown have not been tested and no guarantee as to their operability or efficiency can be given.
Made with Metropix ©2020

Agents Note: Whilst every care has been taken to prepare these sales particulars, they are for guidance purposes only. All measurements are approximate and are for general guidance purposes only and whilst every care has been taken to ensure their accuracy, they should not be relied upon and potential buyers are advised to recheck the measurements. West of Exe is a trading name for East of Exe Ltd. Reg. no. 07121967



EXETER OFFICE
18 Southernhay West Exeter EX1 1PJ
Tel: 01392 833999
enquiries@eastofexe.co.uk
www.eastofexe.co.uk

EAST DEVON OFFICE
61 Fore Street Topsham Exeter EX3 0HL
Tel: 01392 345070
enquiries@eastofexe.co.uk
www.eastofexe.co.uk

WEST OF EXE OFFICE
Main Road Exminster EX6 8DB
Tel: 01392 833999
enquiries@westofexe.co.uk
www.westofexe.co.uk