



Granville Street, Loughborough, Leicestershire

£170,000

Property Description

Great investment opportunity for a property with a history of letting at 101pppw excluding bills (48 weeks) . The property has two reception rooms The fitted kitchen has a range of wall and base units with work surface, inset cooker, space for washing machine and wall mounted gas boiler. There is door to the side giving access to the rear and side entrance. To the first floor are two double bedrooms. A separate bathroom with white three piece suite comprising bath with shower over, pedestal wash hand basin and low level wc. Viewing recommended

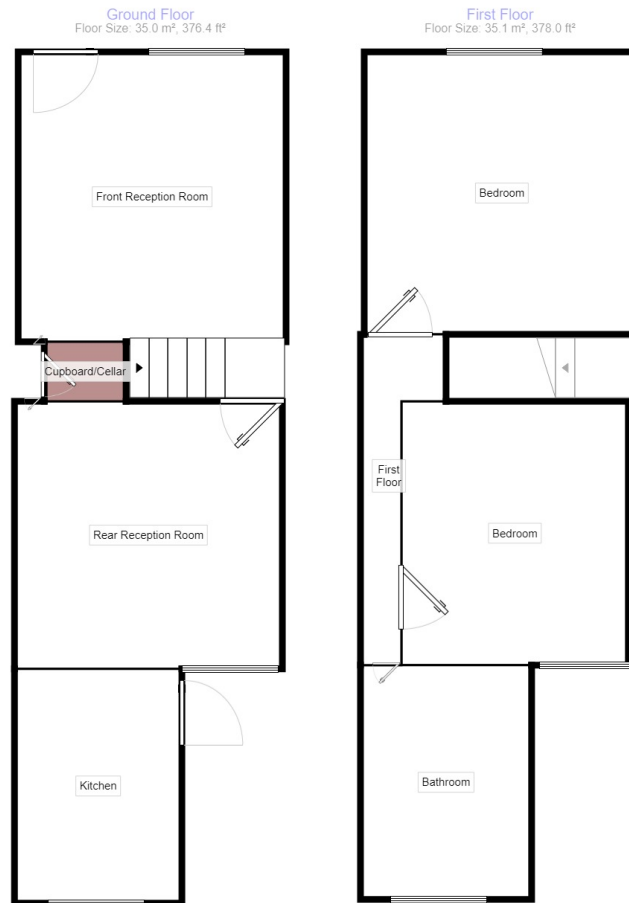


Our View

An opportunity to purchase a property with a history of letting close to all amenities

Location

Loughborough also offers a fine range of amenities including excellent shopping, schooling for all ages, a wide variety of recreational amenities and regular public transport services by both road and rail to Nottingham, Derby, Leicester, London and beyond. The property is located within walking distance to the University and to the Town



Measurements are approximate. Not to scale. For illustrative purposes only.



EPC D

For full EPC please contact the branch

IMPORTANT NOTE TO PURCHASERS: We endeavour to make our sales particulars accurate and reliable, however, they do not constitute or form part of an offer or any contract and none is to be relied upon as statements of representation or fact. The services, systems and appliances listed in this specification have not been tested by us and no guarantee as to their operating ability or efficiency is given. All measurements have been taken as guide to prospective buyers only, and are not precise. Floor plans where included are not to scale and accuracy is not guaranteed. If you require clarification or further information on any points, please contact us, especially if you are travelling some distance to view. Fixtures and fittings other than those mentioned are to be agreed with the seller.

The Your Move branch is operated by National Home Move Limited which is independently owned and operated under a licence from your-move.co.uk Limited. National Home Move Limited is registered in England and Wales with company number 11805074, registered office: 5 Brooklands Place, Brookland Road, Sale, United Kingdom, M33 3SD. VAT Reg No: 31525523.

*Calls may be recorded and/or monitored for training and/or security purposes.

65/66, Baxter Gate, Loughborough, Leicestershire,
LE11 1TH

01509 231731 * loughborough@your-move.co.uk



YOUR MOVE