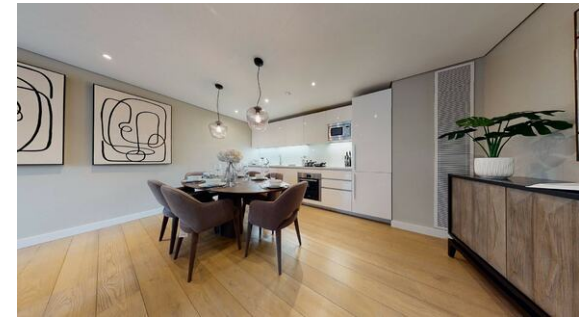




Q Investments
International

3 Bedroom Apartment / Flat
Paddington

£6,716.67 per month
<https://qinvestments.london>



London, Paddington

New Build 3 Bedroom Apartment on Edgware Road in Paddington, Central London.

Size: 942 square feet

The stunning apartment comprises spacious living and entertaining area with a beautiful reception room, modern fully fitted open plan kitchen, one bedroom, one bathroom and ample storage space.

Property is located in the prestigious waterside building and benefits from private underground parking spaces, concierge service and round the clock security.

Apartment is located in one of London's most prestigious postcodes between Paddington and Marylebone. This is a unique location, placed between Hyde Park and Regents Park. There are many transport links being located from nearby Edgware Road Station and even a short walk away from Paddington Station.

The property is a short walk away from the green spaces of Hyde Park as well as the shopping destinations of Oxford Street. You can find there famous department stores like Selfridges, Marks and Spencer, expensive boutiques at Bond Street with all world's high-end designers for fashion, jewellery and watches.

