



Norris Close
Leicester, LE4 0QF

£270,000

Property Features

- FOUR BEDROOMS (ONE ENSUITE)
- FAMILY SHOWER ROOM UPSTAIRS
- DRESSING ROOM
- KITCHEN/DINER
- LIVING ROOM
- DOWNSTAIRS W.C.
- STORE ROOM
- UTILITY AREAS
- PRIVATE ENCLOSED REAR GARDEN

Full Description

This is a GREAT HOUSE offering PLENTY OF ACCOMMODATION! Upstairs there are FOUR BEDROOMS (ONE ENSUITE) as well as a FAMILY SHOWER ROOM. Downstairs there is a SPACIOUS KITCHEN/DINER, a GOOD-SIZED LIVING ROOM, TWO UTILITY AREAS, a STORE ROOM and a W.C. There is OFF-STREET PARKING for one vehicle to the front of the property and to the rear is a PRIVATE ENCLOSED GARDEN.

ENTRANCE HALL

10' 3" x 6' 11" (3.12m x 2.11m)

PVCu double glazed front door leading to light filled entrance hall, providing access to living room, store rooms and carpeted stairwell. Space for hanging coats, tiled flooring and radiator.

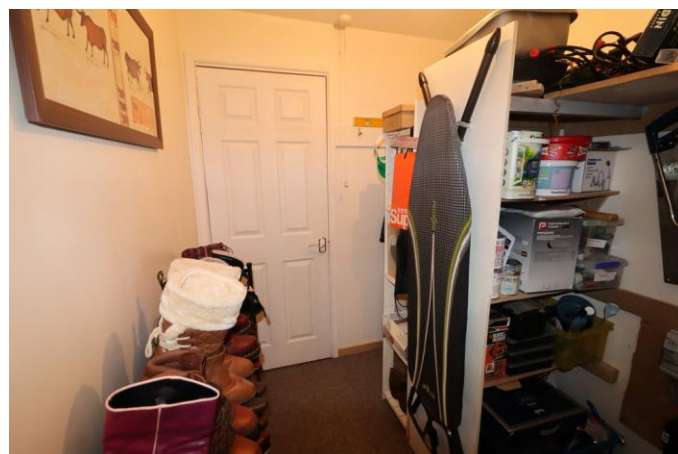
STORE AND UTILITY AREA

A succession of very practical storage areas providing shelving, cupboards and space for utilities including the boiler, washing machine and downstairs WC and sink. Glass panelled PVCu door allowing side access to the property.

LIVING ROOM

20' 7" x 11' 4" (6.27m x 3.45m)

Generously proportioned open plan living room leading to dining/kitchen area allowing great space for entertaining with light and airy feel. Feature gas fireplace with marble hearth and surround and feature wall. Laminate wood flooring, radiator and PVCu window to front aspect.



DINING ROOM

13' 4" x 9' 4" (4.06m x 2.84m)

Lying adjacent to and opening onto kitchen area divided by practical breakfast bar. Laminate wood flooring for continuity from living room, PVCu French doors on to garden, radiator and plenty of space for dining room table, chairs and American fridge freezer.

KITCHEN/BREAKFAST ROOM

13' 4" x 7' 8" (4.06m x 2.34m)

Open plan living/kitchen space, fitted with a range of wall, base and drawer units and laminate work surfaces. Tiled flooring and subway tiled walls, gas hob with extractor fan over, electric oven, space for microwave and one and a half bowl sink and drainer. Breakfast bar allowing plenty of preparation space and casual dining. Under-counter space for washing machine and dishwasher. PVCu windows to both garden and side access of house.

LANDING

Doors to all bedrooms and bathroom, carpet and radiator. PVCu window to side access allowing light filled space.

BEDROOM ONE

15' 0" x 9' 5" (4.57m x 2.87m)

PVCu window to front aspect, carpet, radiator and ample space for wardrobes.

ENSUITE

Fitted with a three piece suite comprising close coupled W.C, pedestal wash hand basin with fitted storage unit beneath and large separate shower cubicle. Tiled flooring and partially tiled walls.

BEDROOM TWO

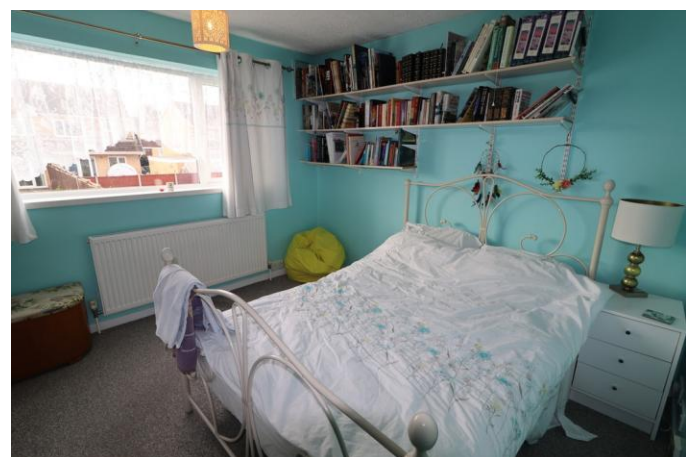
10' 10" x 10' 5" (3.3m x 3.18m)

PVCu window to rear aspect, carpet, radiator and wardrobe space.

BEDROOM THREE

14' 11" x 7' 8" (4.55m x 2.34m)

PVCu window to front aspect, carpet, radiator and door to separate dressing area housing wardrobe and shelving with window to side aspect and radiator.



BEDROOM FOUR

14' 3" x 5' 9" (4.34m x 1.75m)

Irregular shaped room allowing for a dressing area with PVCu windows to rear and side access, carpet and radiator.

BATHROOM

Fitted with a three piece suite comprising close coupled W.C, pedestal wash hand basin with fitted storage unit beneath and large separate shower cubicle. Tiled flooring and partially tiled walls.

OUTSIDE

The front of the property has a block paved driveway allowing for off-street parking and gated access to the side and rear of the house and a selection of planted borders surrounding the front door. The side of the property allows for ample storage of garden tools and bins with access to the storage room area inside. The rear of the property comprises a large patio area directly leading from the dining room with lawns and flower/vegetable patches enclosed in wooden panelled fencing for security and privacy.

