



MILE



## Drayton Road, London NW10 £385,000 Share of Freehold

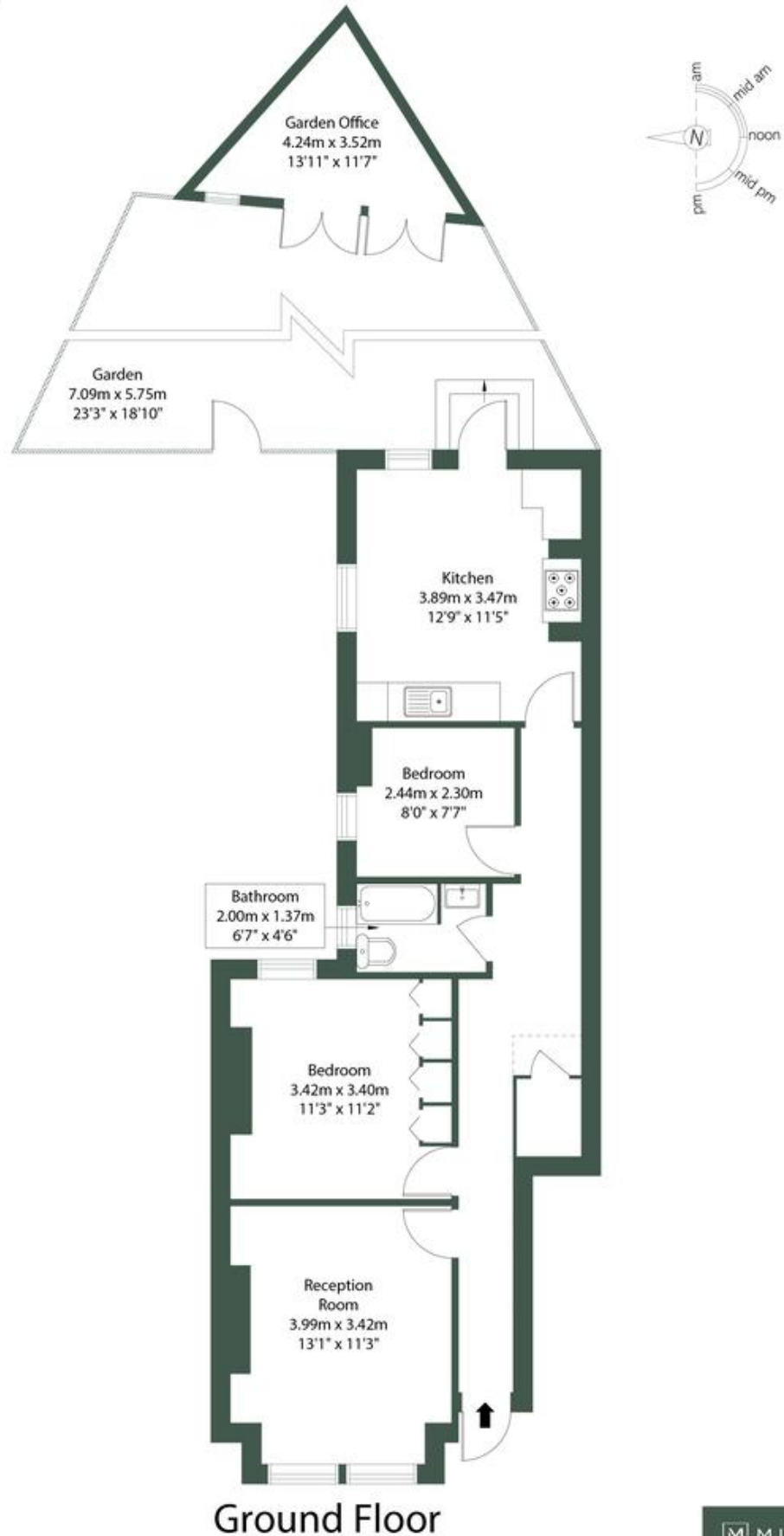
**Welcome to Drayton Road.** Offered as a blank canvas, this charming two-bedroom home presents an exciting opportunity to create your ideal living space in the heart of Harlesden. The property features a spacious reception room with bay windows, a fully fitted eat-in kitchen with French doors opening onto a generous garden—perfect for entertaining—and a sleek, modern three-piece bathroom. At the rear of the garden, a cleverly designed studio/office space offers a versatile work-from-home solution or creative retreat. Additional benefits include two well-proportioned bedrooms, high ceilings, wood sash windows, excellent natural light, and ample storage throughout. The home also enjoys its own private entrance and is carpeted throughout for comfort. Sold chain free and with a share of the freehold, this is a rare opportunity to secure a beautifully presented home with flexible living options. Drayton Road is ideally located just moments from the shops, cafés, and amenities of Harlesden and within walking distance to the vibrant offerings of Willesden Junction. Maple Walk School and the open green spaces of Roundwood Park are just a short stroll away. Excellent transport links via Willesden Junction (Bakerloo Line & Overground) make commuting into Central London swift and convenient.

- Superb garden maisonette
- Two bedrooms / one bathroom
- Great 25ft garden with office space
- Blank canvas
- Chain free
- Share of freehold
- Eat-in kitchen
- Own entrance
- 723 sq ft
- Good location

# Drayton Road, NW10

Approximate Gross Internal Area = 67.21 sq.m / 723 sq.ft  
(Including Study)

Study = 5.95 sq.m / 64 sq.ft



M MILE

**MONEY LAUNDERING REGULATIONS 2003:** Intending purchasers will be asked to produce identification documentation at a later stage and we would ask for your co-operation in order that there will be no delay in agreeing the sale.

**General:** While we endeavour to make our sales particulars fair, accurate and reliable, they are only a general guide to the property and, accordingly, if there is any point which is of particular importance to you, please contact the office and we will be pleased to check the position for you, especially if you are contemplating travelling some distance to view the property.

**Measurements:** These approximate room sizes are only intended as general guidance. You must verify the dimensions carefully before ordering carpets or any built-in furniture.

**Services:** Please note we have not tested the services or any of the equipment or appliances in this property, accordingly we strongly advise prospective buyers to commission their own survey or service reports before finalising their offer to purchase.