



## Tydraw Street offers over £130,000

- Ideal First Time Purchase Or Investment
- Recently Refurbished Throughout
- No On-Going Chain
- Council Tax Band - B
- First Floor Family Bathroom, Ground Floor Cloakroom
- EPC Rating: C



 3  1  2



## About the property

A very well presented, four bedroom terraced home to be sold with no on-going chain within Port Talbot! Boasting excellent links to renowned local schools including St. Joseph's Catholic Schools as well as fantastic public transport links by mainline trainstation or bus routes in the town centre.

Situated great for commuters with brilliant access to the M4 corridor in neighbouring cities! The home is approached via a gated yard to the front, tucked into a private cul-de-sac. Internally, the property comprises of an entrance hallway, with stairs to the landing, and doors through to a lounge and dining room which opens into the kitchen and cloakroom. The first floor houses all four bedrooms, of which three are doubles, as well as the family bathroom and access to the loft space. Internal viewings are highly recommended.

## Accommodation

### Entrance Hallway

### Cloakroom

### Lounge

10' x 12' 4" Plus Recess ( 3.05m x 3.76m Plus Recess )

### Dining Room

12' 2" x 12' 5" ( 3.71m x 3.78m )

### Kitchen

10' 9" x 8' 7" ( 3.28m x 2.62m )



## Landing

## Bedroom One

10' 2" Into Recess x 13' 5" Plus Recess ( 3.10m Into Recess x 4.09m Plus Recess )

## Bedroom Two

10' 7" x 6' 6" ( 3.23m x 1.98m )

## Bedroom Three

9' Into Recess x 10' 3" Plus Recess ( 2.74m Into Recess x 3.12m Plus Recess )

## Bedroom Four

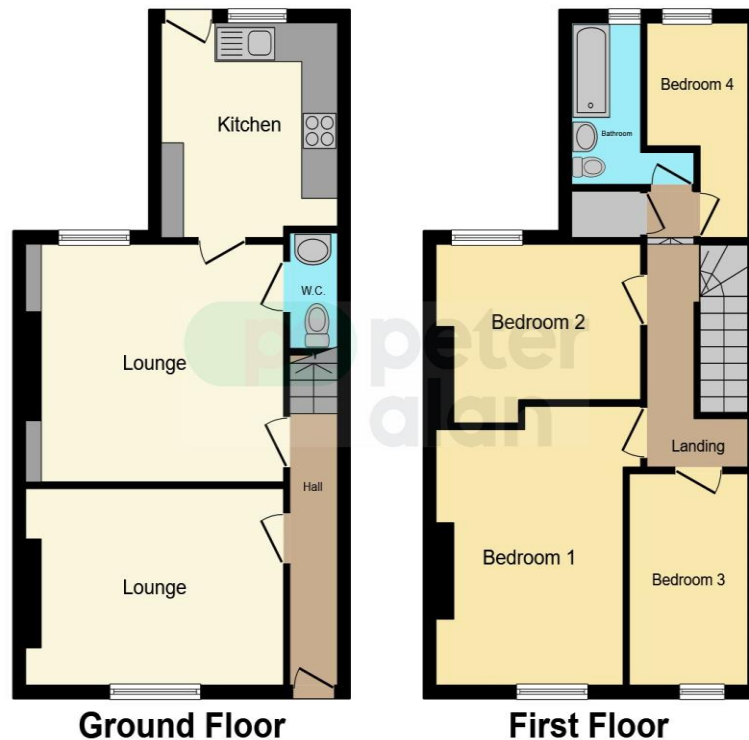
5' 2" Max x 11' 2" ( 1.57m Max x 3.40m )

## Bathroom

## Front Yard & Rear Garden

## Garage

## Floorplan



This floor plan is for illustrative purposes only. It is not drawn to scale. Any measurements, floor areas (including any total floor area), openings and orientation are approximate. No details are guaranteed, they cannot be relied upon for any purpose and they do not form part of any agreement. No liability is taken for any error, omission or misstatement. A party must rely upon its own inspection(s). Powered by [www.focalagent.com](http://www.focalagent.com)

## Important Information

Note while we endeavour to make our sales details accurate and reliable, if there is any point which is of particular interest to you, please contact the office and we will be pleased to confirm the position for you. We have not personally tested any apparatus, equipment, fixtures, fittings or services and cannot verify they are in working order or fit for their purposes. Nothing in these particulars is intended to indicate that carpets or curtains, furnishings or fittings, electrical goods (whether wired or not), Gas fires or light fittings or any other fixtures not expressly included form part of the property offered for sale. This computer generated Floorplan, if applicable, is intended as a general guide to the layout and design of the property. It is not to scale and should not be relied upon for dimensions. Tenure: We cannot confirm the tenure of the property as we have not had access to the legal documents. The buyer is advised to obtain verification from their solicitor or surveyor.

Peter Alan Limited is registered in England and Wales under company number 2073153, Registered Office is Cumbria House, 16-20 Hockliffe Street, Leighton Buzzard, Bedfordshire, LU7 1GN. VAT Registration Number is 500 2481 05. For activities relating to regulated mortgages and non-investment insurance contracts, Peter Alan Limited is an appointed representative of Connells Limited which is authorised and regulated by the Financial Conduct Authority. Connells Limited's Financial Services Register number is 302221. Most buy-to-let