



Parc Tyisha, £365,000

- Great Location
- No Chain!
- Off Road parking
- Garage
- Potential To Extend
- Close To Local Amenities
- Quiet Area
- EPC Rating: C



 3  1  2



About the property

Nestled along a quiet road in the sought-after coastal town of Burry Port, this charming three-bedroom detached bungalow offers a wonderful opportunity to create your perfect home in a peaceful yet convenient location.

Tucked away to provide a real sense of privacy, the property welcomes you with a generously sized reception room - an ideal space for relaxing evenings or entertaining family and friends. A bright conservatory overlooks the garden, creating a lovely spot to enjoy your morning coffee while taking in the greenery. The kitchen is practical and functional, offering great potential for modernisation to suit your personal style.

All three bedrooms are well-proportioned and versatile, whether you need comfortable sleeping accommodation, a home office, or hobby space. The bathroom serves the home conveniently, while the layout as a whole provides excellent flow and usability.

Outside, the property truly shines. The delightful garden offers a private and peaceful retreat - perfect for children, pets, or simply enjoying the outdoors. With off-road parking for two to three vehicles and a garage ideal for storage or with potential for conversion (subject to the necessary consents), this home delivers both practicality and flexibility.

For those needing additional space in the future, the property also presents exciting potential to extend upwards (subject to planning), making it an excellent long-term investment for growing families.



Accommodation

Lounge

17' 7" x 11' 9" (5.36m x 3.58m)

Kitchen

9' 11" x 9' 1" (3.02m x 2.77m)

Conservatory

11' 5" x 9' 5" (3.48m x 2.87m)

Bedroom 1

12' 10" x 9' 9" (3.91m x 2.97m)

Bedroom 2

9' 10" x 9' 5" (3.00m x 2.87m)

Bedroom 3

9' 11" x 7' 9" (3.02m x 2.36m)

Bathroom

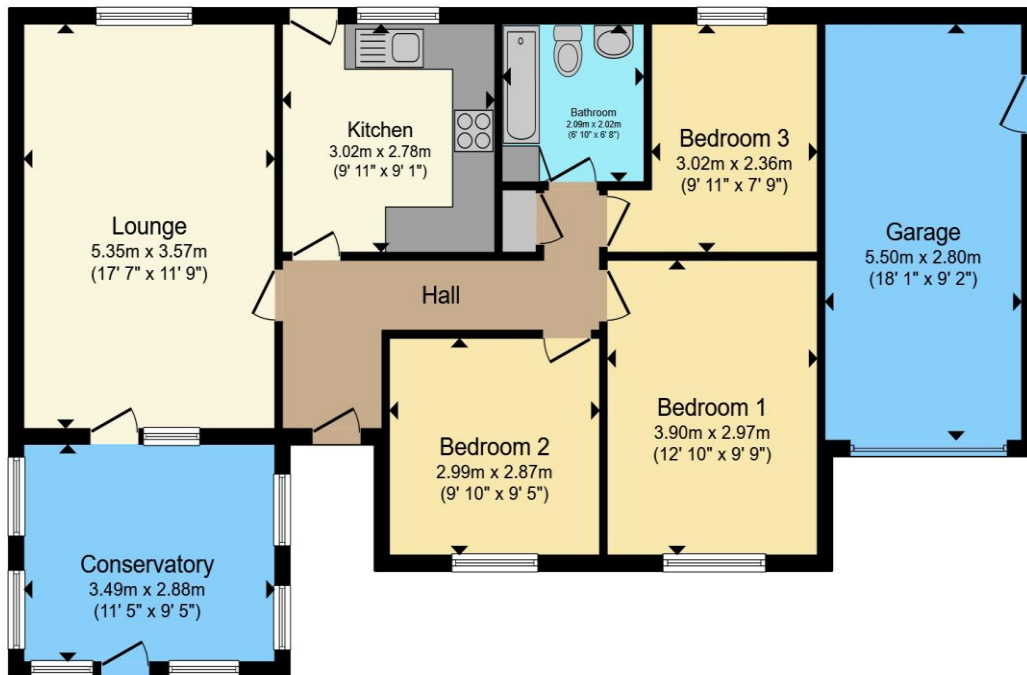
Garage

18' 1" x 7' 9" (5.51m x 2.36m)

01792 894422

gorseinon@peteralan.co.uk

Floorplan



Total floor area 97.4 m² (1,048 sq.ft.) approx

This floor plan is for illustrative purposes only. It is not drawn to scale. Any measurements, floor areas (including any total floor area), openings and orientation are approximate. No details are guaranteed, they cannot be relied upon for any purpose and they do not form part of any agreement. No liability is taken for any error, omission or misstatement. A party must rely upon its own inspection(s). Powered by www.propertybox.io



Important Information

Note while we endeavour to make our sales details accurate and reliable, if there is any point which is of particular interest to you, please contact the office and we will be pleased to confirm the position for you. We have not personally tested any apparatus, equipment, fixtures, fittings or services and cannot verify they are in working order or fit for their purposes. Nothing in these particulars is intended to indicate that carpets or curtains, furnishings or fittings, electrical goods (whether wired or not). Gas fires or light fittings or any other fixtures not expressly included form part of the property offered for sale. This computer generated Floorplan, if applicable, is intended as a general guide to the layout and design of the property. It is not to scale and should not be relied upon for dimensions. Tenure: We cannot confirm the tenure of the property as we have not had access to the legal documents. The buyer is advised to obtain verification from their solicitor or surveyor.

Peter Alan Limited is registered in England and Wales under company number 2073153. Registered Office is Cumbria House, 16-20 Hockliffe Street, Leighton Buzzard, Bedfordshire, LU7 1GN. VAT Registration Number is 500 2481 05. For activities relating to regulated mortgages and non-investment insurance contracts, Peter Alan Limited is an appointed representative of Connells Limited which is authorised and regulated by the Financial Conduct Authority. Connells Limited's Financial Services Register number is 302221. Most buy-to-let

