



One Bedroom (Over 60's) Retirement Home Parish Court, St Marks Hill, Surbiton KT6 4PL £142,100 Leasehold

A light and bright good size apartment on the 2nd floor of the highly regarded Parish Court, Surbiton.

A secure lift serviced development, catering for residents of over 60 years old, ideally situated within a short walk from Surbiton town centre, church and mainline train station with frequent trains to London Waterloo.

. Offering spacious rooms, fitted kitchen and bathroom suite.

The development is managed by a friendly onsite warden with 24 hour assistance service, a strong community feel is present offering frequent activities.

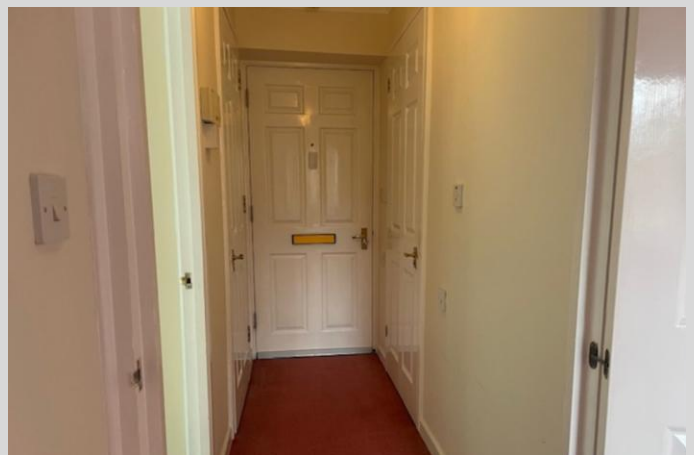
On the ground floor there is a very spacious communal room providing ample space for residents to relax, socialise and entertain guests. Residents also benefit from use of a large laundry room and a guest bedroom available for friends and family.

Well maintained communal gardens, a number of unallocated and several visitors parking spaces.

WWW.STACKANDBONNER.COM

020 8974 8844

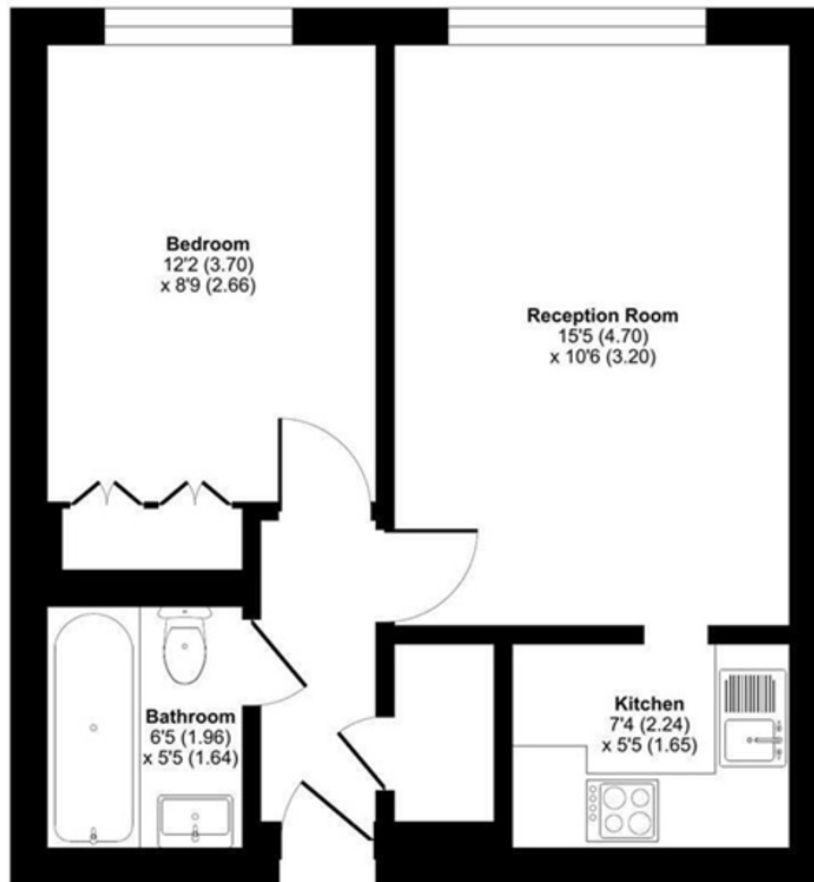
sales@stackandbonner.com



Parish Court, St. Mark's Hill, Surbiton, KT6

Approximate Area = 416 sq ft / 38.6 sq m

For identification only - Not to scale



SECOND FLOOR

Whilst every attempt has been made to ensure the accuracy of the floor plan contained here, measurements of doors, windows, rooms and any other items are approximate, and no responsibility is taken for any error, omission or misstatement. This plan is for illustrative purposes only and should be used as such by any prospective purchaser. The services systems and appliances shown have not been tested, and no guarantee of their operability or efficiency can be given.

- Over 60's Only
- 2nd Floor Spacious Apartment, Lift Service
- Fitted Kitchen
- Fitted Bathroom Suite
- 416 Sq. Ft Living Space
- Service Charge: £2,600
- Ground Rent: £500
- Lease: 88 Years
- On Site Warden with 24 Hour Assistance Service
- Residents Common room and Laundry Room
- Communal Gardens