



**Fitzgerald Place, Cambridge, Cambridgeshire, CB4 1WA**

**£2,000 pcm**

**Unfurnished**

**2 Bedrooms**

**Available from 27/06/2026**

**EPC rating: B**

**45 Mill Road, Cambridge CB1 2AW**

**TEL: 01223 322552**

**E-MAIL: [cambridgelettings@pocock.co.uk](mailto:cambridgelettings@pocock.co.uk)**

**WEB: [www.pocock.co.uk](http://www.pocock.co.uk)**



**Fitzgerald Place, Cambridge,  
Cambridgeshire  
CB4 1WA**

Well presented two bedroom, two bathroom first floor flat overlooking Logans Meadow and the Equiano Bridge. Offered unfurnished with kitchen white goods. One allocated parking spot.

- Unfurnished first floor flat.
- Lift access available.
- Two bedrooms, two bathrooms.
- Appliances provided.
- Balcony.
- One allocated parking space.
- Communal bike store.
- Deposit: £2307.
- Council tax: D
- EPC: B

Rent: £2,000 pcm

Viewing by appointment

**Kitchen Living room**

26'5" x 18'5" (8.06 m x 5.62 m)

The kitchen is fitted with gas hob, electric oven, washer dryer, dishwasher and fridge freezer. Spacious living area with dual aspect including access to the balcony.

**Main bedroom**

13'11" x 11'9" (4.24 m x 3.57 m)

Double room with wardrobe and access to the balcony, plus en-suite.

**En-suite**

10'2" x 5'3" (3.09 m x 1.59 m)

Shower enclosure, WC and basin. Inset mirror.

**Second bedroom**

10'6" x 8'6" (3.21 m x 2.60 m)

Well proportioned room.

**Family bathroom**

10'7" x 6'2" (3.23 m x 1.88 m)

Shower over the bath, basin and WC. Inset mirror. Heated towel rail and cupboard housing the boiler.

**Balcony**

18'5" x 4'11" (5.62 m x 1.51 m)

Green views towards Logans Meadow and the bridge.

## Energy Efficiency Rating

	Current	Potential
<i>Very energy efficient - lower running costs</i>		
(92 plus) <b>A</b>		
(81-91) <b>B</b>		
(69-80) <b>C</b>	82	82
(55-68) <b>D</b>		
(39-54) <b>E</b>		
(21-38) <b>F</b>		
(1-20) <b>G</b>		
<i>Not energy efficient - higher running costs</i>		

## Additional information

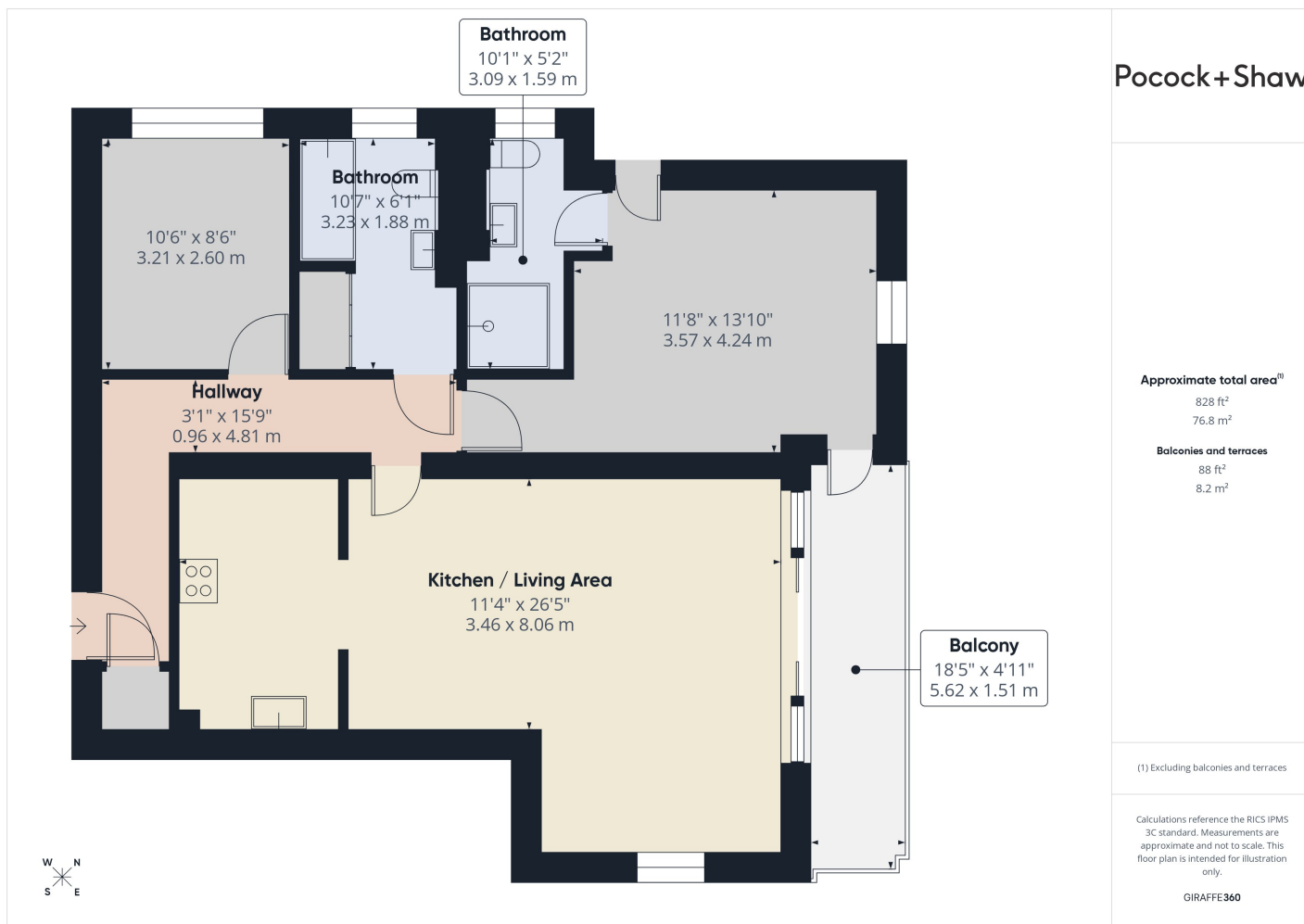
The flat is accessed from the communal corridor.  
 The entrance hall takes you to all rooms.  
 Additional storage cupboard.  
 Parking is allocated.  
 Communal bike store.  
 Lift available.  
 Entry phone system.

**Council Tax Band:** D

**Holding Deposit:** £461

### Material Information:

[https://sprift.com/dashboard/property-report/?access\\_report\\_id=5351119](https://sprift.com/dashboard/property-report/?access_report_id=5351119)



Pocock+Shaw

## Applying for a Property

British or Irish Citizens must evidence their right to rent from the documents listed below.

Either:

- a passport
- a travel document issued by the Home Office
- an immigration status document sent to you when you were given permission to stay in the UK

All of the above must include a Home Office endorsement. For example, a stamp or a vignette (sticker) inside. This must say you have one of the following

- indefinite leave to enter or indefinite leave to remain in the UK
- no time limit to your stay in the UK
- a certificate of entitlement to the right of abode
- exemption from immigration control
- limited leave to enter or limited leave to remain in the UK, or permission to stay for a time limited period - this must cover the time you'll be renting
- a certificate of entitlement to readmission to the UK

Non British or Irish Citizens will need to obtain a share code and including the following documentation to indicate the named person may stay in the UK. <https://www.gov.uk/prove-right-to-rent/get-a-share-code-online>

Either:

- a British passport (current or expired)
- an Irish passport or passport card (current or expired)
- a certificate of reintegration or naturalisation as a British citizen

**OR**

Two of the following:

- a current UK driving licence (full or provisional)
- a full birth or adoption certificate from the UK, Guernsey, Jersey, the Isle of Man or Ireland
- a letter from your employer
- a letter from a British passport holder in an accepted profession
- a letter from a UK government department or local council
- proof that you currently receive benefits
- a letter from a British school, college, or university that you currently go to
- a Disclosure and Barring Service (DBS) certificate
- proof that you have served in the UK armed forces
- a letter from a private rented sector access scheme or a voluntary organisation assisting you with housing
- a letter confirming you have been released from prison within the past 6 months
- a letter confirming you are on probation from your offender manager
- a letter from the UK police about the theft of your passport

These checks need to be followed up either 12 months from the date of the previous check, or before the expiry of the person's right to live in the UK. Copies of these documents are kept and will also be sent to our reference company so they can be verified

### Important

All applications and negotiations are subject to contract, successful referencing and landlord approval. The payment of the initial monies will be deemed as acceptance of these terms.

### Deposit held during the tenancy:

The security deposit of no more than the equivalent of 5 weeks' rent (or 6 weeks' for a property with a rent of over £50,000 per year), is held during the tenancy and this, together with the initial rent payment, is to be received by Pocock & Shaw before the tenancy can commence.

### Other costs a tenant may incur

In addition to the deposit and rent, a tenant may potentially be charged for the following when required:

1. A holding deposit of no more than one weeks' rent;
2. A default fee for late payment of rent (after 14 days);
3. Reasonable charges for lost keys or security fobs;
4. Costs associated with contract variation when requested by the tenant, at £50, or reasonable costs incurred if higher.
5. Costs associated with early termination of the tenancy, when requested by the tenant; and
6. Costs in respect of bills - utilities, communication services, TV licence, council tax and green deal or other energy efficiency charges.