





Tucked away in one of Liss village's most peaceful and sought-after roads, this delightful two bedroom detached bungalow is a wonderful opportunity for those looking to put their own stamp on a much-loved home in the heart of the South Downs National Park. Offered to the market with no onward chain, the property sits behind a beautifully established cottage-style front garden, bursting with colour and character.

Bright and spacious living and dining room, a genuinely impressive space measuring almost 20ft x 20ft (6.00 x 5.78m). Two outlook aspects frame the most incredible open countryside views directly to the rear.

The fitted kitchen offers solid pine cabinetry with ample storage and workspace, and benefits from a separate utility room - a practical addition that buyers always appreciate. There are two well-proportioned double bedrooms, both with fitted wardrobes. A family bathroom complete the internal accommodation.

Outside, the rear garden is a nature-lover's paradise - lush, mature and wonderfully private, with a greenhouse for keen gardeners and a timber outbuilding/shed providing excellent additional storage. The direct outlook over open fields and countryside beyond is simply stunning and gives this property a sense of space and tranquillity.

To the front, a driveway leads to an attached garage (4.97 x 2.44m), with the cottage-style front garden providing real kerb appeal with its vibrant planting and climbing roses.

Riverside Close is ideally located for everything that makes Liss such a popular village - the mainline station (London



Waterloo/Ports mouth), village shops and local amenities are all within comfortable walking distance. The historic market town of Petersfield is approximately 4 miles to the south, while the South Downs National Park offers endless walking and cycling on the doorstep.

Viewing is absolutely essential to appreciate everything on offer!

EPC - TBC

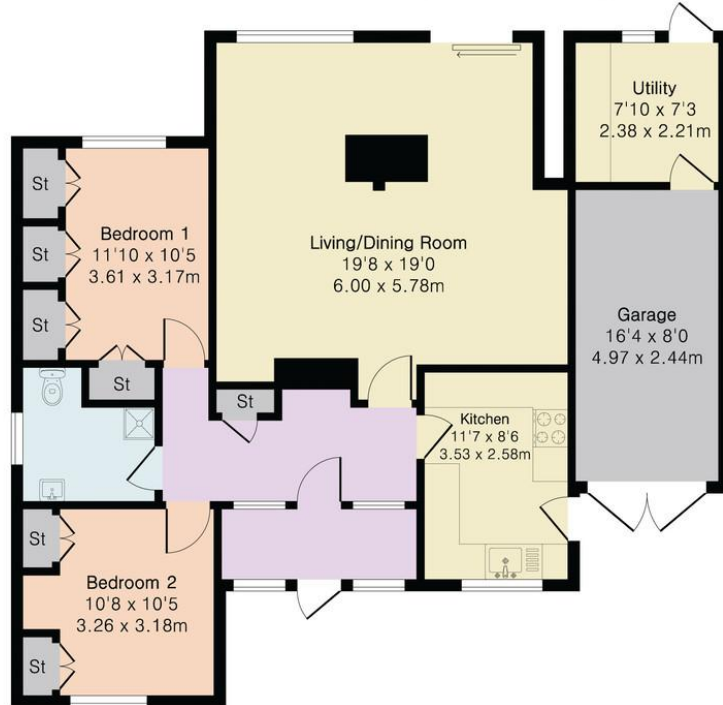
Council Tax Band D - £2323 per annum.

Viewing through Jacobs & Hunt Estate Agents Ltd.



**Approximate Gross Internal Area 905 sq ft - 84 sq m  
(Excluding Garage)**

Garage Area 196 sq ft - 18 sq m



Ground Floor



26 Lavant Street, Petersfield,  
Hampshire, GU32 3EF

[www.jacobshunt.co.uk](http://www.jacobshunt.co.uk)  
01730 262744  
[properties@jacobshunt.co.uk](mailto:properties@jacobshunt.co.uk)

Agents Note: Whilst every care has been taken to prepare these particulars, they are for guidance purposes only. All measurements are approximate and for general guidance purposes only and whilst every care has been taken to ensure their accuracy, they should not be relied upon and potential buyers/tenants are advised to recheck the measurements



Zoopa rightmove  onTheMarket