



Highfield Stadwen

£240,000

- Three Bedroom Detached Bungalow
- Two Conservatories
- Three Generous-Sized Bedrooms
- Detached Garage
- Driveway
- No Ongoing Chain
- EPC Rating: E



 3  1  1



About the property

Situated in the highly sought-after area of Llansamlet, this beautifully presented detached three-bedroom bungalow offers spacious and versatile accommodation throughout, making it an ideal home for families, retirees, or those seeking convenient single-storey living.

Upon entering the property, you are welcomed into a generous and inviting lounge, providing the perfect space for relaxation and entertaining. The modern fitted kitchen has been thoughtfully designed to offer both style and practicality, with ample storage and workspace.

The bungalow boasts three generously sized bedrooms, all offering comfortable living accommodation, alongside a well-appointed family bathroom. A particular feature of this delightful home is the addition of two conservatories, creating bright and versatile spaces that can be enjoyed throughout the year while overlooking the gardens.

Externally, the property benefits from a large driveway providing ample off-road parking for multiple vehicles, together with a detached garage. To the front and rear are attractive gardens, offering excellent outdoor space for gardening enthusiasts, family enjoyment, or simply relaxing in a peaceful setting.



Accommodation

Hallway

Driveway

Kitchen

Garage

11' 10" x 11' 7" (3.61m x 3.53m)

Lounge

10' 10" x 14' 9" (3.30m x 4.50m)

Conservatory Two

9' 4" x 10' 10" (2.84m x 3.30m)

Bathroom

9' 3" x 9' 11" (2.82m x 3.02m)

Bedroom One

13' x 11' 4" (3.96m x 3.45m)

Bedroom Two

10' x 12' 10" (3.05m x 3.91m)

Bedroom Three

8' 11" x 8' 3" (2.72m x 2.51m)

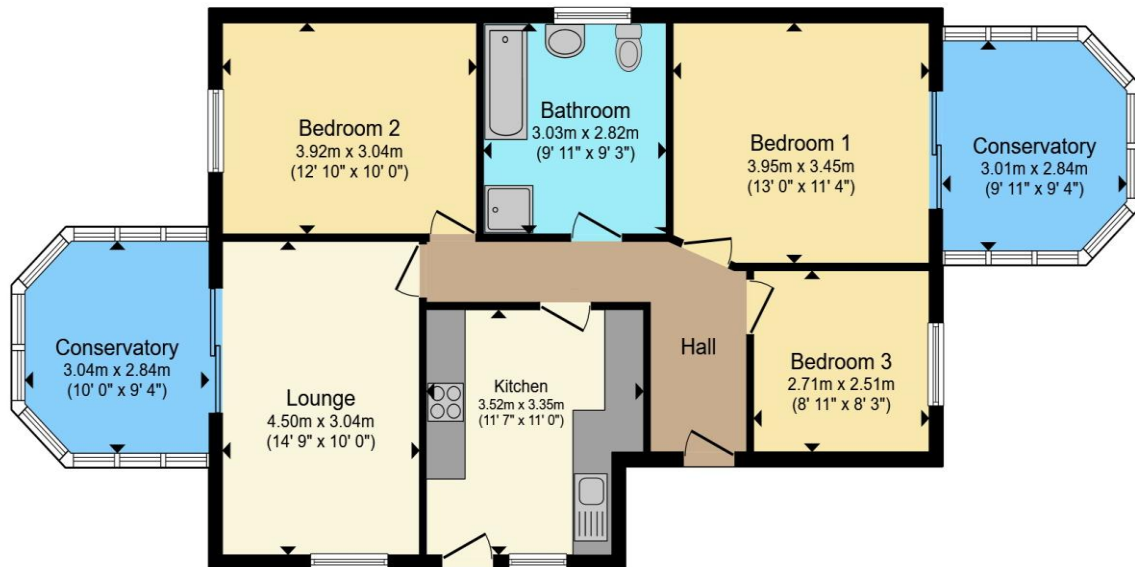
Conservatory One

9' 11" x 9' 4" (3.02m x 2.84m)

01792 798201

morrison@peteralan.co.uk

Floorplan



Total floor area 93.2 m² (1,004 sq.ft.) approx

This floor plan is for illustrative purposes only. It is not drawn to scale. Any measurements, floor areas (including any total floor area), openings and orientation are approximate. No details are guaranteed, they cannot be relied upon for any purpose and they do not form part of any agreement. No liability is taken for any error, omission or misstatement. A party must rely upon its own inspection(s). Powered by www.propertybox.io



Important Information

Note while we endeavour to make our sales details accurate and reliable, if there is any point which is of particular interest to you, please contact the office and we will be pleased to confirm the position for you. We have not personally tested any apparatus, equipment, fixtures, fittings or services and cannot verify they are in working order or fit for their purposes. Nothing in these particulars is intended to indicate that carpets or curtains, furnishings or fittings, electrical goods (whether wired or not). Gas fires or light fittings or any other fixtures not expressly included form part of the property offered for sale. This computer generated Floorplan, if applicable, is intended as a general guide to the layout and design of the property. It is not to scale and should not be relied upon for dimensions. Tenure: We cannot confirm the tenure of the property as we have not had access to the legal documents. The buyer is advised to obtain verification from their solicitor or surveyor.

Peter Alan Limited is registered in England and Wales under company number 2073153, Registered Office is Cumbria House, 16-20 Hockliffe Street, Leighton Buzzard, Bedfordshire, LU7 1GN. VAT Registration Number is 500 2481 05. For activities relating to regulated mortgages and non-investment insurance contracts, Peter Alan Limited is an appointed representative of Connells Limited which is authorised and regulated by the Financial Conduct Authority. Connells Limited's Financial Services Register number is 302221. Most buy-to-let

