



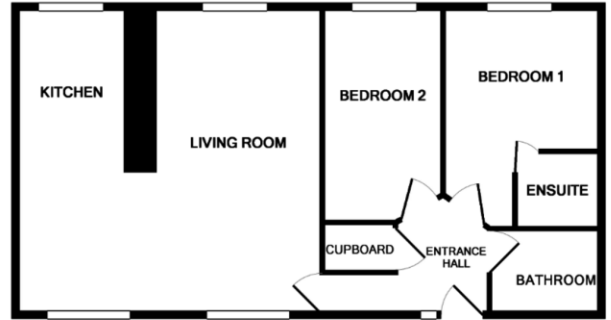
Superb two double bedroom apartment situated in a tucked away location within the beautiful grounds of Devington Park, Exminster. This attractive property offers light and spacious accommodation with high ceilings and tall windows, and comprises of; large double aspect lounge/dining room, modern fitted kitchen, two double bedrooms - master with en-suite, and bathroom. Residents of Devington Park can enjoy the use of the beautifully kept grounds and gardens, fitness room and allocated/visitors parking. Chain Free.

Lower Cloister Walk
Exminster £180,000

West of 

Lower Cloister Walk Exminster £180,000

Attractive property and surroundings | Good access to the city of Exeter and major road network | Two double bedrooms | Large lounge/dining room | Modern fitted kitchen | Master bedroom with en-suite | Bathroom with white suite | Allocated parking space and further visitors spaces | Use of all communal facilities | Chain Free



PROPERTY DETAILS:

APPROACH:

The Cloisters are accessed via steps located in the corner of North Wing located near the front of the development. Steps lead up to a glass panelled door which leads into the Cloisters walkway and the front entrance to No 8.

FRONT DOOR TO APARTMENT AND ENTRANCE HALLWAY

Outside light.

ENTRANCE HALLWAY

Front door leading to a spacious and attractive hallway with wood effect laminate flooring and high coved ceiling. Spacious airing cupboard with central heating boiler and shelving. Central heating radiator. Entrance phone. Telephone socket. Panel doors to lounge, bedrooms, and bathroom.

LOUNGE

19' 6" x 11' 6" (5.94m x 3.51m) Bright and spacious double aspect lounge with tall arched windows to front and rear aspects. High coved ceiling with picture rail. Attractive fireplace with wood surround and marble effect inset and hearth. Two central heating radiators. TV and telephone sockets. Archway to kitchen/dining room.

KITCHEN/DINING AREA

19' 6" x 7' 2" (5.94m x 2.18m) Beautifully fitted modern kitchen in attractive light wood effect finish with excellent range of base and wall units. Integrated stainless steel electric cooker and gas hob with cooker hood over. Integrated fridge, freezer, dishwasher, and washer-dryer. Roll-edge worktop with tiled surround and inset stainless steel sink. Arched sash windows to front and rear aspects. High coved ceiling with recess spotlights. Extractor fan. Central heating radiator. Ceramic tiled flooring in kitchen area.

BEDROOM 1

13' 8" x 9' 5" (4.17m x 2.87m) Tall arched window to rear aspect and high coved ceiling. Central heating radiator. Television socket. Door to en-suite shower room.

EN-SUITE SHOWER ROOM

High coved ceiling with recessed spotlights and fitted extractor fan. Modern white suite comprising: low level w/c, pedestal wash basin, and tiled shower enclosure with glass door and electric shower. Fitted mirror with wall lights. Central heating radiator. Chrome bathroom accessories. Shaver socket.

BEDROOM 2

12' 5" x 8' 0" (3.78m x 2.44m) Tall arched window to rear aspect and high coved ceiling. Central heating radiator.

BATHROOM

6' 6" x 5' 3" (1.98m x 1.6m) High coved ceiling with recessed spotlights. Modern white bathroom suite comprising: low level w.c., pedestal hand wash basin, and bath with tiled surround, inset mirror and chrome taps with mixer shower. Wall mirror with wall lights. Radiator. Shaver socket. Extractor fan. Chrome bathroom accessories.

OUTSIDE

PARKING

Allocated parking space and ample visitors parking.

COMMUNAL FACILITIES

Use of wonderful communal grounds including mini lake with seating area, fitness room, drying room and bike store.



Agents Note: Whilst every care has been taken to prepare these sales particulars, they are for guidance purposes only. All measurements are approximate and for general guidance purposes only and whilst every care has been taken to ensure their accuracy, they should not be relied upon and potential buyers are advised to recheck the measurements. West of Exe is a trading name for East of Exe Ltd, Reg. no. 07121967

EAST DEVON OFFICE

61 Fore Street Topsham Exeter EX3 0HL
Tel: 01392 345070
enquiries@eastofexe.co.uk
www.eastofexe.co.uk

EXETER OFFICE

18 Southernhay West Exeter EX1 1PJ
Tel: 01392 833999
enquiries@eastofexe.co.uk
www.eastofexe.co.uk

WEST OF EXE OFFICE

Main Road Exminster EX6 8DB
Tel: 01392 833999
enquiries@westofexe.co.uk
www.westofexe.co.uk