



STUART THOMAS
ESTATES



- SEMI DETACHED BUNGALOW
- GOOD SIZE THROUGHOUT
- TWO GOOD SIZE BEDROOMS
- SHOWER ROOM

7 Cedar Hall Gardens, Thundersley, Essex, SS7 3RS

Guide Price £310,000

Come along to view this DELIGHTFUL semi-detached TWO DOUBLE BEDROOM bungalow with a GARAGE. With a WELL FITTED kitchen and shower room with a good size lounge. Within WALKING DISTANCE of Thundersley Village shops and The Common! NO ONWARD CHAIN. Call our office to view on SATURDAY 21ST NOVEMBER.



Property Description

ENTRANCE HALL

Composite door leading to a good size hallway. Radiator. Access to the loft. Wood effect flooring. Cupboard.

LOUNGE

14' 11" x 10' 11" (4.55m x 3.33m) This good size room is bright with doors to the rear garden. Feature fireplace. Radiator. Carpeted.

KITCHEN

11' 09" x 7' 10" (3.58m x 2.39m) Fitted with a range of units at eye and base level. Door leading to rear garden. One and half bowl single drainer stainless steel sink unit with a mixer tap over. Space for free standing fridge freezer and washing machine. Integrated oven and gas hob cooker. Extractor hood above.

BEDROOM ONE

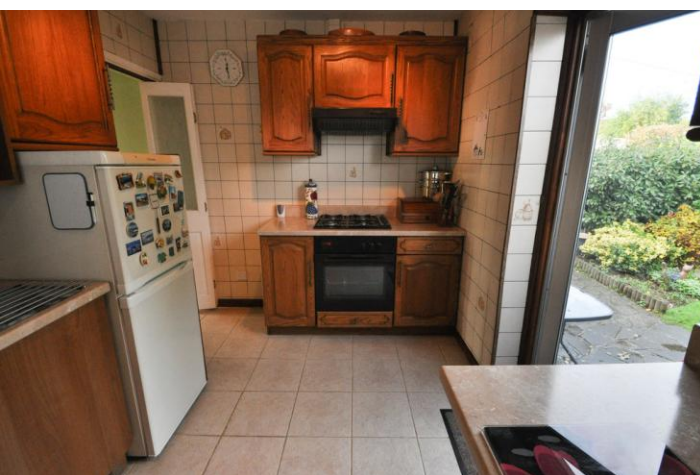
9' 11" x 8' 11" (3.02m x 2.72m) Two double glazed windows to the front. Radiator.

BEDROOM TWO

11' 04" x 9' 10" (3.45m x 3m) Double glazed window to the front. Radiator.

SHOWER ROOM

8' 00" x 5' 09" (2.44m x 1.75m) 3 piece white suite comprising a low level wc pedestal wash hand basin and shower and shower screen. Double glazed obscure window to the side. Heated towel rail. Tiled to all visible walls. Combi Boiler housed in cupboard.





REAR GARDEN

Well established and secluded rear garden with an abundance of shrubs and the remainder laid to lawn. Patio area.

GARAGE

Shared driveway leading to detached garage.

AGENTS NOTE

NO ONWARD CHAIN.





%epcGraph_c_1_334%

294 Kiln Road, Benfleet, Essex,
SS7 1QT

stestates.co.uk
01702 558110
info@stestates.co.uk

Agents Note: Whilst every care has been taken to prepare these sales particulars, they are for guidance purposes only. All measurements are approximate are for general guidance purposes only and whilst every care has been taken to ensure their accuracy, they should not be relied upon and potential buyers are advised to recheck the measurements.