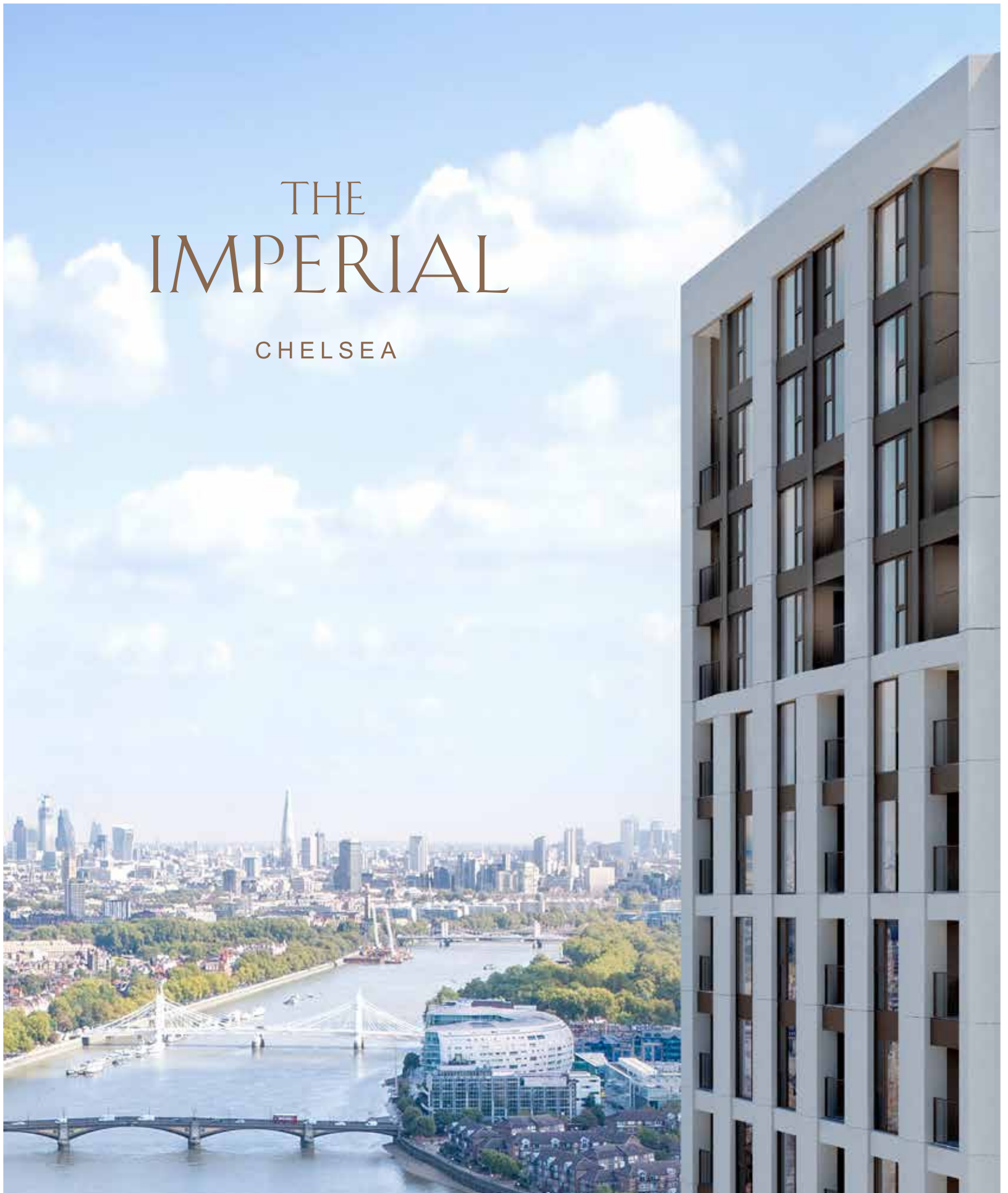


THE IMPERIAL

CHELSEA



<https://qinvestments.eu/>

LOCATED IN ONE
OF THE WORLD'S MOST
EXCLUSIVE NEIGHBOURHOODS
JUST MOMENTS FROM THE
POPULAR KING'S ROAD,
THE IMPERIAL AT CHELSEA
CREEK OFFERS A COLLECTION
OF MANHATTAN, 1, 2, 3
& 4-BEDROOM LUXURY
APARTMENTS AND
PENTHOUSES IN A UNIQUE
WATERSIDE SETTING.





HARRODS

HYDE PARK

KING'S ROAD

DUKE OF YORK SQUARE

SLOANE SQUARE

THE CITY

CHELSEA BRIDGE

THE IMPERIAL

CHELSEA CREEK

CANARY WHARF

BATTERSEA PARK

CHELSEA HARBOUR

IMPERIAL WHARF STATION

RIVER THAMES

CGI is indicative only



View from The Imperial (Computer generated image, indicative only)

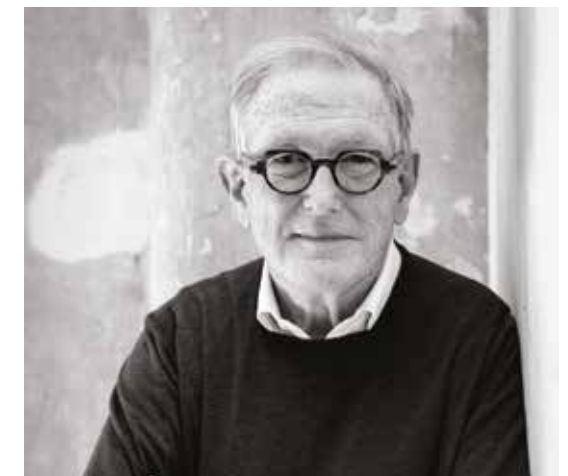
Towering 31-stories above the city, The Imperial boasts breathtaking views of London and the River Thames. Each apartment features a balcony and is designed to offer residents an abundance of natural light.



Computer generated image is indicative only.

THE VISION

Chelsea Creek brings a characteristically European style of waterside living to central London. Award-winning architectural practice Squire and Partners looked to Amsterdam and Copenhagen for inspiration. Bright, contemporary apartments overlooking restful canal waterways and tree-lined promenades offer a refreshingly unique urban lifestyle.



Architect: Michael Squire

A TRANQUIL WATERSIDE SETTING

Discover peace and tranquility away from fast-paced city life. Over half of Chelsea Creek is dedicated to carefully considered open spaces, such as landscaped gardens, lawns and flowerbeds. Wander down tree-lined avenues and walk over beautifully designed bridges to enjoy the meandering waterways unique to Chelsea Creek.

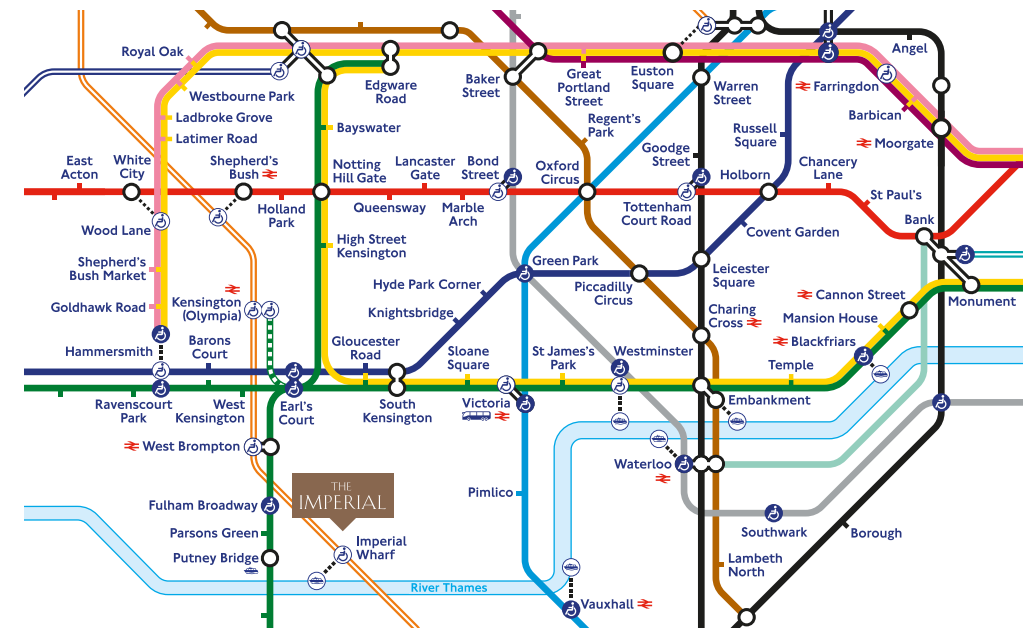


GETTING AROUND

Conveniently located on the River Thames and close to a range of transport options, it's easy to move around and discover more of the vibrant city from your base at Chelsea Creek.



Map is not to scale and shows approximate locations only



WALKING

Imperial Wharf	4 Mins
Chelsea Harbour	5 Mins
King's Road	8 Mins
Fulham Broadway	14 Mins
Hurlingham Club	23 Mins
Battersea Park	35 Mins
South Kensington	41 Mins
Saatchi Gallery	42 Mins
Sloane Square	46 Mins
Design Museum	48 Mins

DRIVING

Sloane Square	10 Mins
Chelsea & Westminster Hospital	10 Mins
Knightsbridge	12 Mins
Westfield	14 Mins
Hyde Park	16 Mins
Park Lane	16 Mins
Oxford Street	20 Mins
King's Cross	30 Mins
Heathrow Airport	35 Mins
Gatwick Airport	55 Mins
London City Airport	60 Mins
Luton Airport	1 Hr 15 Mins
Stansted Airport	1 Hr 30 Mins

LONDON HELIPORT

Located within easy reach, London Heliport is open daily from 7am until 10.30pm. Extended operating hours are available by prior appointment.

PUBLIC TRANSPORT*

West Brompton	3 Mins
Clapham Junction	5 Mins
Kensington (Olympia)	6 Mins
Shepherd's Bush	8 Mins
Victoria	21 Mins
High Street Kensington	23 Mins
Bond Street	24 Mins
Oxford Circus	25 Mins
Imperial College	28 Mins
Gatwick Airport	42 Mins
Heathrow Airport	54 Mins

CYCLING

Fulham Broadway	3 Mins
Parsons Green	4 Mins
South Kensington	10 Mins
Sloane Square	12 Mins
Harrods	12 Mins
Hyde Park	17 Mins
White City	21 Mins
Oxford Circus	25 Mins

RIVER TAXI

Fast, frequent and exhilarating, the river taxi is a popular choice for hopping to and from Chelsea Harbour, from right outside Imperial Wharf to Blackfriars, Putney and other favourite spots. The service runs Monday to Friday from 6.30am.

Journey times are approximate only. Source: www.tfl.gov.uk & Google
*Public transport times are from Imperial Wharf.

CINEMA ROOM

Relax and unwind while watching the latest movie or sporting event in the deluxe Cinema room.

Cinema Room (Computer generated image, indicative only)



REJUVENATE AND RESTORE

Make more time for yourself at the holistic wellness centre. Take a dip in the indoor heated pool or enjoy our treatment room, rain shower, Scandinavian-style sauna and steam room.

Lifestyle images are indicative only.



FITNESS SUITE

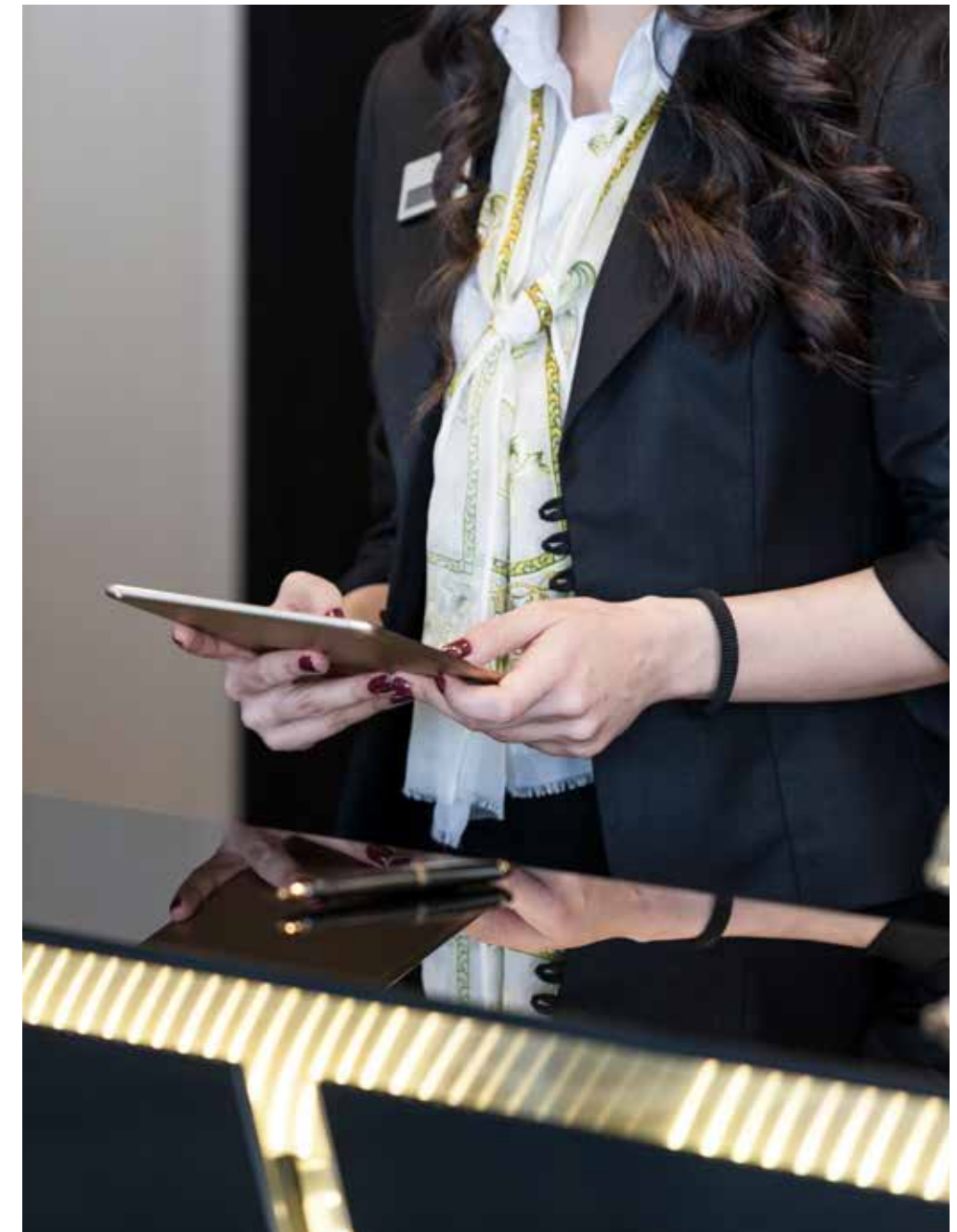
The sleek, modern gymnasium provides the latest cardio and kinesis equipment, and includes embedded televisions to enjoy as you exercise.



Residents gym

A SEAMLESS SERVICE

With exclusive community-focused events, a 24-hour concierge service and an on-site team to take care of management and security, we're dedicated to providing five-star service that caters to every nuance of modern living.



Concierge service

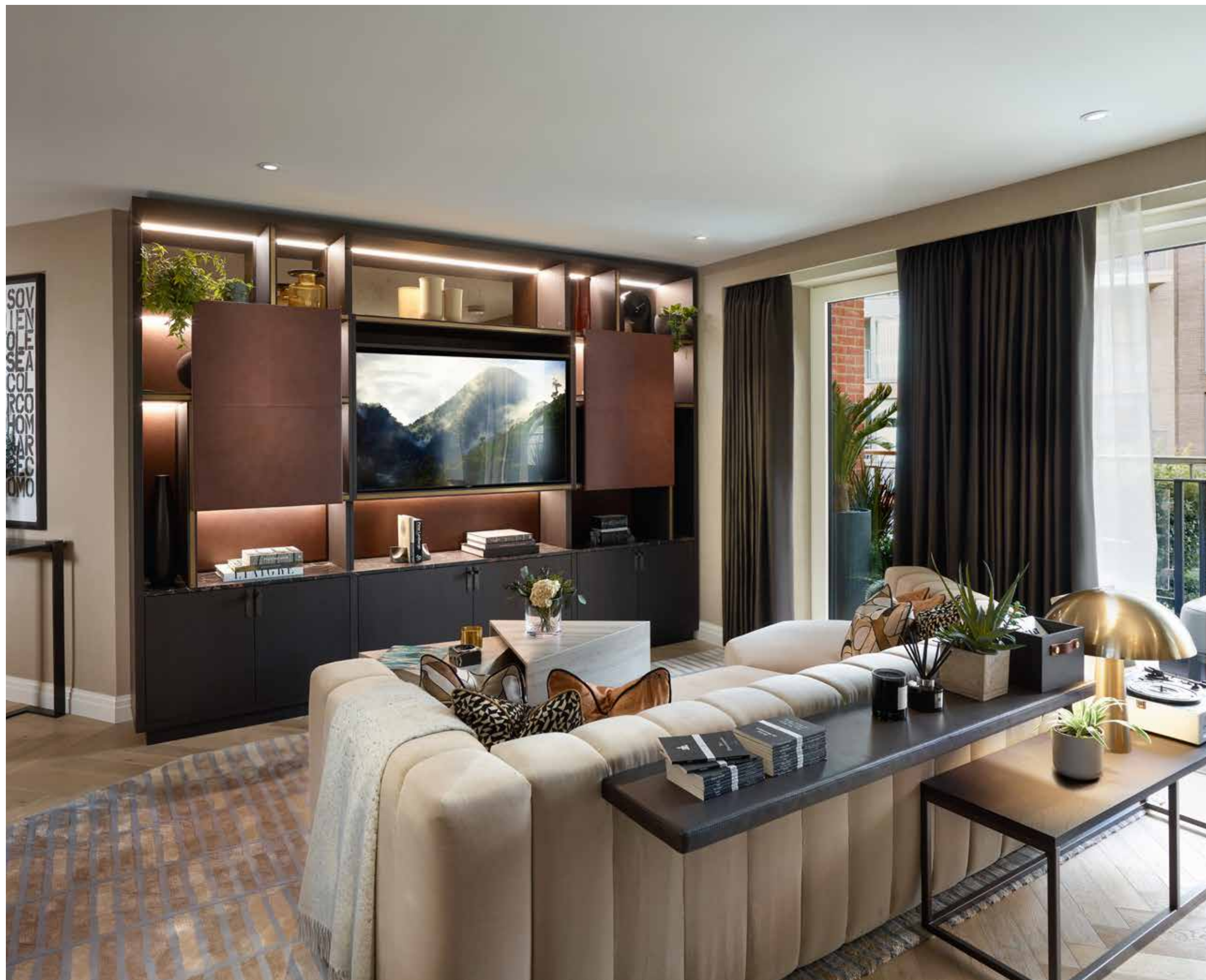


CURATED INTERIORS

Timeless materials and textures combine seamlessly to create functional yet contemporary interiors. Choose between a feeling of cool elegance to warm sophistication from our selection of three distinct interior palettes. Come home to a personal sanctuary – the ideal accompaniment to a busy London lifestyle.

A PLACE WHERE CLASSIC BRITISH MEETS CONTEMPORARY

Taking inspiration from Chelsea's rich arts and design culture, the apartments at The Imperial are a contemporary reimagining of traditional London style.



Interior photography is of the showhome living room. Lifestyle images are indicative only.



Manhattan apartment (Computer generated image, indicative only)



Principle Bedroom (Computer generated image, indicative only)

KNIGHTSBRIDGE COLLECTION

Bathroom (Computer generated image, indicative only)



Black marble floor and wall tiles bring sophistication to this sultry and sleek bathroom. Featuring 3D contrasting wall tiles and stylish brushed brass fittings.

Kitchen (Computer generated image, indicative only)



Elegant beaded profile to herbaceous green kitchen cabinet doors. Brushed brass ironmongery and composite stone worktops and splashbacks.

KENSINGTON COLLECTION

Interior photography is of the showhome bathroom. Lifestyle images are indicative only.



White marble floor and wall tiles create a sophisticated space with contrasting 3D wall tiles and brushed brass fittings.

Interior photography is of the showhome kitchen. Lifestyle images are indicative only.



Elegant beaded profile to stylish blue kitchen cabinet doors. Brushed brass ironmongery and composite stone worktops and splashbacks.

CHELSEA COLLECTION

Interior photography is of the showhome bathroom. Lifestyle images are indicative only.



A serene and calming space with white marble wall tiles and black marble floor tiles. Featuring contrasting 3D wall tiles and brushed brass fittings.

Kitchen (Computer generated image, indicative only)



Elegant beaded profile to soft taupe kitchen cabinet doors. Brushed brass ironmongery and composite stone worktops and splashbacks.

FLOORPLANS

A 31 storey tower offering a collection of manhattan, 1, 2 and 3 bedroom luxury apartments and duplex penthouses in a unique waterside setting.



APARTMENT	LEVEL	PAGE
MANHATTAN APARTMENTS		
1113, 1119, 1126, 1133, 1140, 1147 & 1154	1 - 7	34
1114, 1120, 1127, 1134, 1141 1148 & 1155	1 - 7	35
1 BEDROOM APARTMENTS		
1112 & 1118	1 & 2	36
1125, 1132 & 1153	3, 4 & 7	37
1139 & 1146	5 & 6	38
1116	1	39
1123	2	40
1163, 1178, 1183, 1198, 1203, 1218, 1223, 1238 & 1243	8, 11, 12, 15, 16, 19, 20, 23, 24	41
1168, 1173, 1188, 1193, 1208, 1213, 1228, 1233, 1248 & 1253	9, 10, 13, 14, 17, 18, 21, 22, 25, 26	42
1258 & 1263	27 & 28	43
1124	2	44
1131, 1138, 1159, 1164, 1179, 1184, 1199, 1204, 1219, 1224, 1239 & 1244	3, 4, 7, 8, 11, 12, 15, 16, 19, 20, 23 & 24	45
1145, 1152, 1169, 1174, 1189, 1194, 1209, 1214, 1229, 1234, 1249 & 1254	5, 6, 9, 10, 13, 14, 17, 18, 21, 22, 25 & 26	46
1259 & 1264	27 & 28	47
1130, 1137 & 1158	3, 4 & 7	48
1144 & 1151	5 & 6	49
2 BEDROOM APARTMENTS		
1115	1	50
1117	1	51
1121	2	52
1128, 1135 & 1156	3, 4 & 7	53
1142 & 1149	5 & 6	54
1162, 1177, 1182, 1197, 1202, 1217, 1222, 1237 & 1242	8, 11, 12, 15, 16, 19, 20, 23 & 24	55
1167, 1172, 1187, 1192, 1207, 1212, 1227, 1232, 1247 & 1252	9, 10, 13, 14, 17, 18, 21, 22, 25 & 26	56
1257 & 1262	27 & 28	57
1160	8	58
1165, 1170, 1185, 1190, 1205, 1210, 1225, 1230, 1245 & 1250	9, 10, 13, 14, 17, 18, 21, 22, 25 & 26	59
1175, 1180, 1195, 1200, 1215, 1220, 1235 & 1240	11, 12, 15, 16, 19, 20, 23 & 24	60
1255 & 1260	27 & 28	61
3 BEDROOM APARTMENTS		
1122	2	62
1129, 1136 & 1157	3, 4 & 7	63
1143 & 1150	5 & 6	64
1161	8	65
1166, 1171, 1186, 1191, 1206, 1211, 1226, 1231, 1246 & 1251	9, 10, 13, 14, 17, 18, 21, 22, 25 & 26	66
1176, 1181, 1196, 1201, 1216, 1221, 1236 & 1241	11, 12, 15, 16, 19, 20, 23 & 24	67
1256 & 1261	27 & 28	68
THE PENTHOUSES		
1265	29 & 30	72-73
1266	29 & 30	74-75
1267	29 & 30	78-79
1268	29 & 30	82-83

MANHATTAN APARTMENT

APARTMENTS 1113*, 1119*, 1126, 1133, 1140, 1147 & 1154
LEVELS 1-7



View towards
King's Road Park



MANHATTAN APARTMENT

APARTMENTS 1114, 1120, 1127, 1134, 1141, 1148 & 1155
LEVELS 1-7

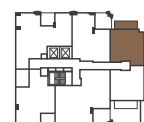


View towards
canal



TOTAL INTERNAL AREA	46.16 SQ M	497 SQ FT
LIVING / DINING	3.33M X 4.63M	10' 11" X 15' 2"
KITCHEN	2.12M X 2.76M	6' 11" X 9' 0"
BEDROOM	3.38M X 3.43M	11' 1" X 11' 3"
BALCONY	6.97 SQ M	75 SQ FT

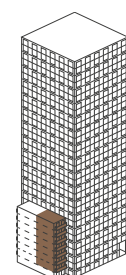
LEVEL 1



LEVEL 2



ELEVATION
NORTH WEST

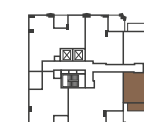


- Washing machine
- Integrated fridge freezer
- 4 ring hob
- C Cupboard
- U Utility room
- TV
- PS Privacy screen

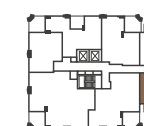
*Apartments 1113 & 1119 are wheelchair adaptable, please contact the Sales Team for more information.

TOTAL INTERNAL AREA	44.69 SQ M	481 SQ FT
LIVING / DINING	3.44M X 4.31M	11' 3" X 14' 1"
KITCHEN	2.22M X 2.76M	7' 3" X 9' 0"
BEDROOM	3.27M X 3.10M	10' 8" X 10' 2"
BALCONY	6.95 SQ M	75 SQ FT

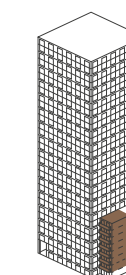
LEVEL 1



LEVEL 2



ELEVATION
SOUTH EAST



Floor plans shown are approximate measurements only. Exact layout and size may vary. All measurements may vary within a tolerance of 5%. Please note, the furniture is not included. Please contact the Chelsea Creek sales team for further details.

1 BEDROOM

APARTMENTS 1112 & 1118
LEVELS 1 & 2

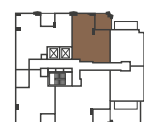


View towards
King's Road Park

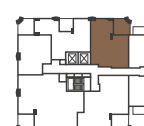


TOTAL INTERNAL AREA	63.81 SQ M	687 SQ FT
LIVING / DINING	4.62M X 4.35M	15' 2" X 14' 3"
KITCHEN	2.67M X 2.45M	8' 9" X 8' 1"
BEDROOM	3.25M X 3.37M	10' 8" X 11' 1"
BALCONY	10.08 SQ M	108 SQ FT

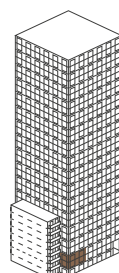
LEVEL 1



LEVEL 2



ELEVATION
NORTH WEST
NORTH EAST



Washing machine
 Integrated fridge freezer
 4 ring hob
 C Cupboard
 U Utility room
 TV
 PS Privacy screen

*Apartment 1112 is wheelchair adaptable, please contact the Sales Team for more information.

1 BEDROOM

APARTMENTS 1125, 1132 & 1153
LEVELS 3, 4 & 7



View towards
King's Road Park

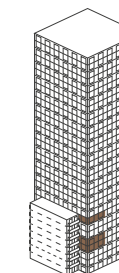


TOTAL INTERNAL AREA	63.67 SQ M	685 SQ FT
LIVING / DINING	4.63M X 4.35M	15' 2" X 14' 3"
KITCHEN	2.67M X 2.45M	8' 9" X 8' 1"
BEDROOM	3.25M X 3.37M	10' 8" X 11' 1"
BALCONY	10.08 SQ M	108 SQ FT

LEVEL 3



ELEVATION
NORTH WEST
NORTH EAST



Floor plans shown are approximate measurements only. Exact layout and size may vary. All measurements may vary within a tolerance of 5%. Please note, the furniture is not included. Please contact the Chelsea Creek sales team for further details.

1 BEDROOM

APARTMENTS 1139 & 1146
LEVELS 5 & 6

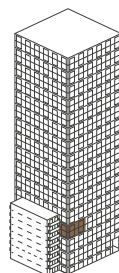


TOTAL INTERNAL AREA	63.67 SQ M	685 SQ FT
LIVING / DINING	4.63M X 4.35M	15' 2" X 14' 3"
KITCHEN	2.67M X 2.45M	8' 9" X 8' 0"
BEDROOM	3.25M X 3.37M	10' 8" X 11' 1"
BALCONY	10.08 SQ M	108 SQ FT

LEVEL 5



ELEVATION NORTH WEST
NORTH EAST



Washing machine
 Integrated fridge freezer
 4 ring hob
 C Cupboard
 U Utility room
 TV
 PS Privacy screen

1 BEDROOM

APARTMENT 1116
LEVEL 1

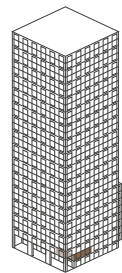


TOTAL INTERNAL AREA	63.56 SQ M	684 SQ FT
LIVING / DINING	4.92M X 4.10M	16' 2" X 13' 5"
KITCHEN	1.89M X 3.28M	6' 2" X 10' 9"
BEDROOM	3.00M X 4.69M	9' 10" X 15' 4"
BALCONY	6.73 SQ M	72 SQ FT

LEVEL 1



ELEVATION SOUTH EAST
SOUTH WEST



Floor plans shown are approximate measurements only. Exact layout and size may vary. All measurements may vary within a tolerance of 5%. Please note, the furniture is not included. Please contact the Chelsea Creek sales team for further details.

1 BEDROOM

APARTMENT 1123
LEVEL 2

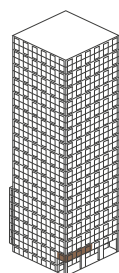


TOTAL INTERNAL AREA	49.97 SQ M	538 SQ FT
LIVING / DINING	4.45M X 3.86M	14' 7" X 12' 8"
KITCHEN	2.20M X 3.21M	7' 2" X 10' 7"
BEDROOM	3.30M X 3.60M	10' 10" X 11' 10"
BALCONY	10.08 SQ M	108 SQ FT

LEVEL 2



ELEVATION SOUTH WEST NORTH WEST



Washing machine
 Integrated fridge freezer
 4 ring hob
 C Cupboard
 U Utility room
 TV
 PS Privacy screen

1 BEDROOM

APARTMENTS 1163, 1178, 1183, 1198, 1203, 1218, 1223, 1238 & 1243
LEVELS 8, 11, 12, 15, 16, 19, 20, 23 & 24

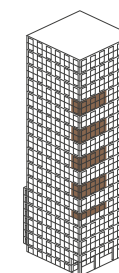


TOTAL INTERNAL AREA	52.72 SQ M	567 SQ FT
LIVING / DINING	4.46M X 4.22M	14' 7" X 13' 10"
KITCHEN	2.20M X 3.22M	7' 2" X 10' 7"
BEDROOM	3.31M X 3.23M	10' 10" X 10' 7"
BALCONY	10.08 SQ M	108 SQ FT

LEVEL 8



ELEVATION SOUTH WEST NORTH WEST



LEVEL 11



Floor plans shown are approximate measurements only. Exact layout and size may vary. All measurements may vary within a tolerance of 5%. Please note, the furniture is not included. Please contact the Chelsea Creek sales team for further details.

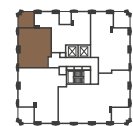
1 BEDROOM

APARTMENTS 1168, 1173, 1188, 1193, 1208, 1213, 1228, 1233, 1248 & 1253
LEVELS 9, 10, 13, 14, 17, 18, 21, 22, 25 & 26

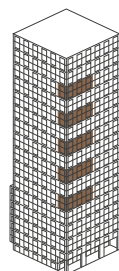


TOTAL INTERNAL AREA	52.72 SQ M	567 SQ FT
LIVING / DINING	4.46M X 4.22M	14' 7" X 13' 10"
KITCHEN	2.20M X 3.22M	7' 2" X 10' 7"
BEDROOM	3.31M X 3.23M	10' 10" X 10' 7"
BALCONY	10.08 SQ M	108 SQ FT

LEVEL 9



ELEVATION SOUTH WEST NORTH WEST



Washing machine
 Integrated fridge freezer
 4 ring hob
 C Cupboard
 U Utility room
 TV
 PS Privacy screen

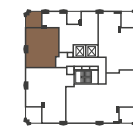
1 BEDROOM

APARTMENTS 1258 & 1263
LEVELS 27 & 28

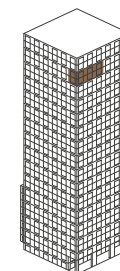


TOTAL INTERNAL AREA	52.71 SQ M	567 SQ FT
LIVING / DINING	4.46M X 4.22M	14' 7" X 13' 10"
KITCHEN	2.20M X 3.22M	7' 2" X 10' 7"
BEDROOM	3.31M X 3.23M	10' 10" X 10' 7"
BALCONY	10.08 SQ M	108 SQ FT

LEVEL 27



ELEVATION SOUTH WEST NORTH WEST



Floor plans shown are approximate measurements only. Exact layout and size may vary. All measurements may vary within a tolerance of 5%. Please note, the furniture is not included. Please contact the Chelsea Creek sales team for further details.

1 BEDROOM

APARTMENT 1124
LEVEL 2

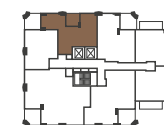


View towards
King's Road Park

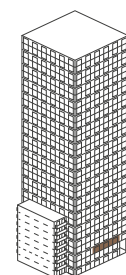


TOTAL INTERNAL AREA	57.35 SQ M	617 SQ FT
LIVING ROOM	3.17M X 3.91M	10' 5" X 12' 10"
KITCHEN / DINING	4.54M X 2.54M	14' 11" X 8' 4"
BEDROOM	4.30M X 3.08M	14' 1" X 10' 1"
BALCONY	7.04 SQ M	76 SQ FT

LEVEL 2



ELEVATION
NORTH WEST



Washing machine
 Integrated fridge freezer
 4 ring hob
 C Cupboard
 U Utility room
 TV
 PS Privacy screen

1 BEDROOM

APARTMENTS 1131, 1138, 1159, 1164, 1179, 1184, 1199, 1204, 1219, 1224, 1239 & 1244
LEVELS 3, 4, 7, 8, 11, 12, 15, 16, 19, 20, 23 & 24



View towards
King's Road Park

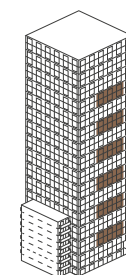


TOTAL INTERNAL AREA	58.15 SQ M	626 SQ FT
LIVING ROOM	3.28M X 3.91M	10' 9" X 12' 10"
KITCHEN / DINING	4.54M X 2.54M	14' 11" X 8' 4"
BEDROOM	4.30M X 2.83M	14' 1" X 9' 3"
BALCONY	6.02 SQ M	65 SQ FT

LEVEL 3



ELEVATION
NORTH WEST



LEVEL 11



LEVEL 8



Floor plans shown are approximate measurements only. Exact layout and size may vary. All measurements may vary within a tolerance of 5%. Please note, the furniture is not included. Please contact the Chelsea Creek sales team for further details.

1 BEDROOM

APARTMENTS 1145, 1152, 1169, 1174, 1189, 1194, 1209, 1214, 1229, 1234, 1249 & 1254
LEVELS 5, 6, 9, 10, 13, 14, 17, 18, 21, 22, 25 & 26



View towards
King's Road Park

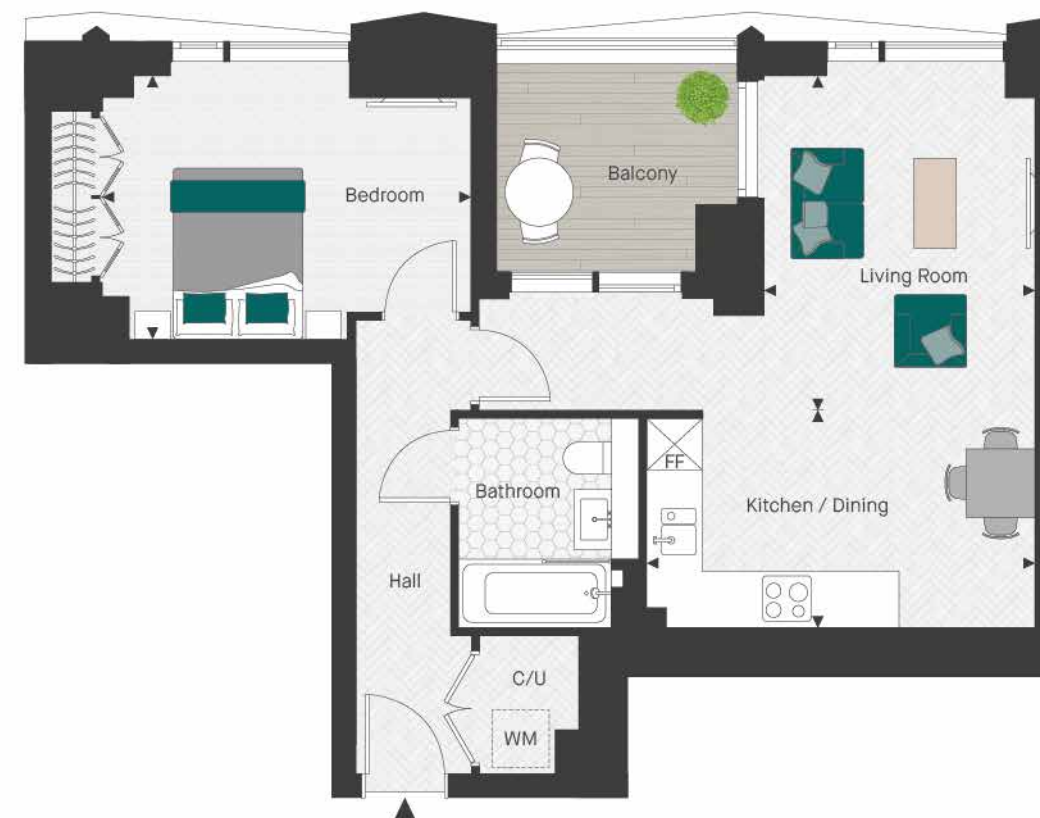


1 BEDROOM

APARTMENTS 1259 & 1264
LEVELS 27 & 28



View towards
King's Road Park



TOTAL INTERNAL AREA	58.15 SQ M	626 SQ FT
LIVING ROOM	3.28M X 3.91M	10' 9" X 12' 10"
KITCHEN / DINING	4.54M X 2.54M	14' 11" X 8' 4"
BEDROOM	4.30M X 2.83M	14' 1" X 9' 3"
BALCONY	6.02 SQ M	65 SQ FT

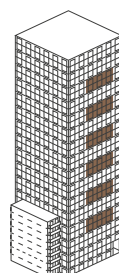
LEVEL 5



LEVEL 9



ELEVATION
NORTH WEST



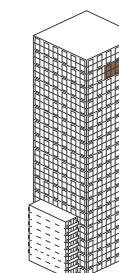
Washing machine
 Integrated fridge freezer
 4 ring hob
 C Cupboard
 U Utility room
 TV
 PS Privacy screen

TOTAL INTERNAL AREA	57.25 SQ M	616 SQ FT
LIVING ROOM	3.17M X 3.91M	10' 5" X 12' 10"
KITCHEN / DINING	4.54M X 2.54M	14' 11" X 8' 4"
BEDROOM	4.30M X 3.08M	14' 1" X 10' 1"
BALCONY	7.07 SQ M	76 SQ FT

LEVEL 27



ELEVATION
NORTH WEST



Floor plans shown are approximate measurements only. Exact layout and size may vary. All measurements may vary within a tolerance of 5%. Please note, the furniture is not included. Please contact the Chelsea Creek sales team for further details.

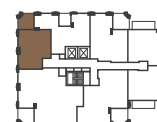
1 BEDROOM

APARTMENTS 1130, 1137 & 1158
LEVELS 3, 4 & 7

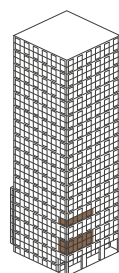


TOTAL INTERNAL AREA	49.96 SQ M	538 SQ FT
LIVING / DINING	4.45M X 3.86M	14' 7" X 12' 8"
KITCHEN	2.20M X 3.21M	7' 2" X 10' 7"
BEDROOM	3.30M X 3.60M	10' 10" X 11' 10"
BALCONY	10.08 SQ M	108 SQ FT

LEVEL 3



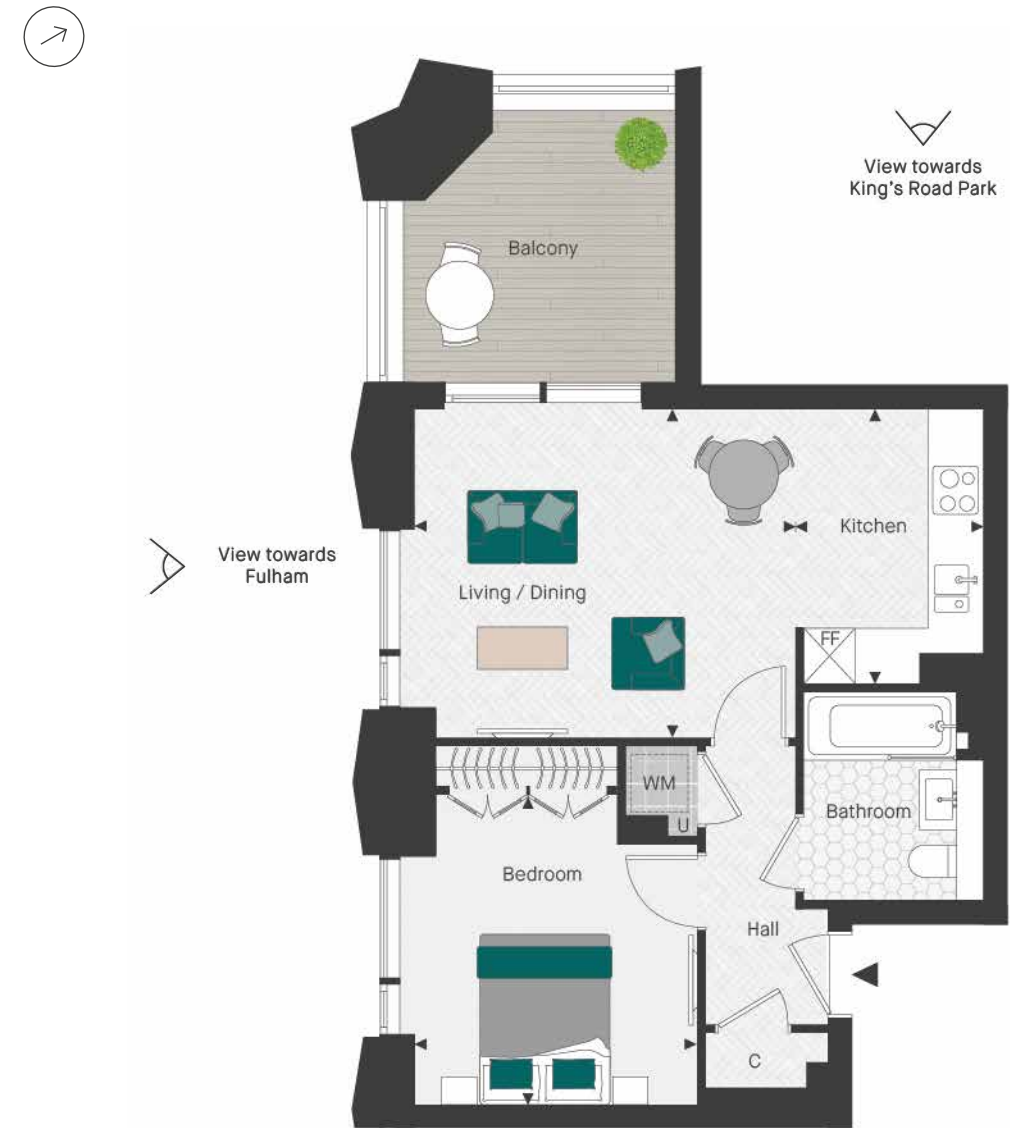
ELEVATION SOUTH WEST NORTH WEST



Washing machine
 Integrated fridge freezer
 4 ring hob
 C Cupboard
 U Utility room
 TV
 PS Privacy screen

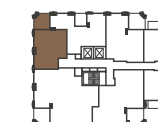
1 BEDROOM

APARTMENTS 1144 & 1151
LEVELS 5 & 6

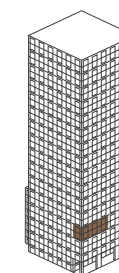


TOTAL INTERNAL AREA	49.96 SQ M	538 SQ FT
LIVING / DINING	4.45M X 3.86M	14' 7" X 12' 8"
KITCHEN	2.20M X 3.21M	7' 2" X 10' 7"
BEDROOM	3.30M X 3.60M	10' 10" X 11' 10"
BALCONY	10.08 SQ M	108 SQ FT

LEVEL 5



ELEVATION NORTH WEST SOUTH WEST



Floor plans shown are approximate measurements only. Exact layout and size may vary. All measurements may vary within a tolerance of 5%. Please note, the furniture is not included. Please contact the Chelsea Creek sales team for further details.

2 BEDROOM

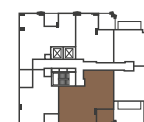
APARTMENT 1115*
LEVEL 1



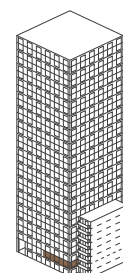
View towards canal

TOTAL INTERNAL AREA	94.43 SQ M	1016 SQ FT
LIVING ROOM	5.28M X 4.37M	17' 4" X 14' 4"
DINING	2.84M X 3.54M	9' 4" X 11' 7"
KITCHEN	2.88M X 3.54M	9' 5" X 11' 7"
BEDROOM 1	3.83M X 3.67M	12' 7" X 12' 0"
BEDROOM 2	2.77M X 3.29M	9' 1" X 10' 10"
BALCONY	11.04 SQ M	119 SQ FT

LEVEL 1



ELEVATION SOUTH EAST NORTH EAST



Washing machine
 Integrated fridge freezer
 4 ring hob
 C Cupboard
 U Utility room
 TV
 PS Privacy screen

*Apartment 1115 is wheelchair adaptable, please contact the Sales Team for more information.

2 BEDROOM

APARTMENT 1117
LEVEL 1



View towards King's Road Park



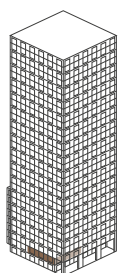
View towards Fulham

TOTAL INTERNAL AREA	85.85 SQ M	924 SQ FT
LIVING ROOM	3.17M X 3.88M	10' 5" X 12' 9"
DINING	3.07M X 3.59M	10' 1" X 11' 9"
KITCHEN	3.45M X 2.57M	11' 4" X 8' 5"
BEDROOM 1	4.91M X 3.27M	16' 1" X 10' 9"
BEDROOM 2	2.60M X 3.28M	8' 6" X 10' 9"
BALCONY	7.04 SQ M	76 SQ FT

LEVEL 1



ELEVATION NORTH WEST SOUTH WEST



Floor plans shown are approximate measurements only. Exact layout and size may vary. All measurements may vary within a tolerance of 5%. Please note, the furniture is not included. Please contact the Chelsea Creek sales team for further details.

2 BEDROOM

APARTMENT 1121*
LEVEL 2



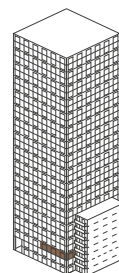
View towards canal

TOTAL INTERNAL AREA	81.47 SQ M	877 SQ FT
LIVING ROOM	4.12M X 3.99M	13' 6" X 13' 1"
KITCHEN / DINING	3.18M X 3.32M	10' 5" X 10' 11"
BEDROOM 1	3.65M X 3.39M	12' 0" X 11' 1"
BEDROOM 2	3.36M X 3.90M	11' 0" X 12' 9"
BALCONY	11.06 SQ M	119 SQ FT

LEVEL 2



ELEVATION SOUTH EAST NORTH EAST



Washing machine
 Integrated fridge freezer
 4 ring hob
 C Cupboard
 U Utility room
 TV
 PS Privacy screen

*Apartment 1121 is wheelchair adaptable, please contact the Sales Team for more information.

2 BEDROOM

APARTMENTS 1128, 1135 & 1156
LEVELS 3, 4 & 7



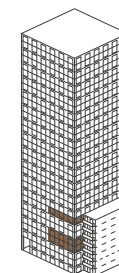
View towards canal

TOTAL INTERNAL AREA	81.36 SQ M	876 SQ FT
LIVING ROOM	4.12M X 3.99M	13' 6" X 13' 1"
KITCHEN / DINING	3.18M X 3.32M	10' 5" X 10' 11"
BEDROOM 1	3.65M X 3.39M	12' 0" X 11' 1"
BEDROOM 2	3.36M X 3.90M	11' 0" X 12' 9"
BALCONY	11.01 SQ M	118 SQ FT

LEVEL 3



ELEVATION SOUTH EAST NORTH EAST



Floor plans shown are approximate measurements only. Exact layout and size may vary. All measurements may vary within a tolerance of 5%. Please note, the furniture is not included. Please contact the Chelsea Creek sales team for further details.

2 BEDROOM

APARTMENT 1142* & 1149*
LEVELS 5 & 6

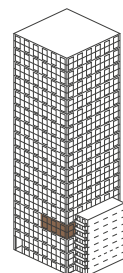


TOTAL INTERNAL AREA	81.36 SQ M	876 SQ FT
LIVING ROOM	4.12M X 3.99M	13' 6" X 13' 1"
KITCHEN / DINING	3.18M X 3.32M	10' 5" X 10' 11"
BEDROOM 1	3.65M X 3.39M	12' 0" X 11' 1"
BEDROOM 2	3.36M X 3.90M	11' 0" X 12' 9"
BALCONY	11.01 SQ M	118 SQ FT

LEVEL 5



ELEVATION SOUTH EAST
NORTH EAST



Washing machine
 Integrated fridge freezer
 4 ring hob
 C Cupboard
 U Utility room
 TV
 PS Privacy screen
 P Pantry

*Apartments 1142 & 1149 are wheelchair adaptable, please contact the Sales Team for more information.

2 BEDROOM

APARTMENTS 1162, 1177, 1182, 1197, 1202, 1217, 1222, 1237 & 1242
LEVELS 8, 11, 12, 15, 16, 19, 20, 23 & 24



View towards Fulham

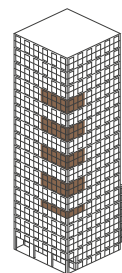


TOTAL INTERNAL AREA	84.25 SQ M	907 SQ FT
LIVING ROOM	4.78M X 3.14M	15' 8" X 10' 4"
KITCHEN / DINING	5.05M X 3.24M	16' 7" X 10' 7"
BEDROOM 1	4.13M X 2.87M	13' 7" X 9' 5"
BEDROOM 2	2.99M X 3.82M	9' 10" X 12' 6"
BALCONY	10.06 SQ M	108 SQ FT

LEVEL 8



ELEVATION SOUTH WEST
SOUTH EAST



LEVEL 11



Floor plans shown are approximate measurements only. Exact layout and size may vary. All measurements may vary within a tolerance of 5%. Please note, the furniture is not included. Please contact the Chelsea Creek sales team for further details.

2 BEDROOM

APARTMENTS 1167, 1172, 1187, 1192, 1207, 1212, 1227, 1232, 1247 & 1252
LEVELS 9, 10, 13, 14, 17, 18, 21, 22, 25 & 26

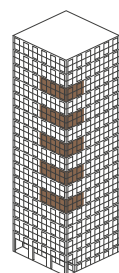


TOTAL INTERNAL AREA	84.25 SQ M	907 SQ FT
LIVING ROOM	4.78M X 3.14M	15' 8" X 10' 4"
KITCHEN / DINING	5.05M X 3.24M	16' 7" X 10' 7"
BEDROOM 1	4.14M X 2.87M	13' 7" X 9' 5"
BEDROOM 2	2.99M X 3.82M	9' 10" X 12' 6"
BALCONY	10.06 SQ M	108 SQ FT

LEVEL 9



ELEVATION SOUTH WEST SOUTH EAST



2 BEDROOM

APARTMENTS 1257 & 1262
LEVELS 27 & 28

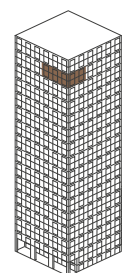


TOTAL INTERNAL AREA	84.22 SQ M	907 SQ FT
LIVING ROOM	4.78M X 3.14M	15' 8" X 10' 4"
KITCHEN / DINING	5.05M X 3.24M	16' 7" X 10' 7"
BEDROOM 1	4.14M X 2.87M	13' 7" X 9' 5"
BEDROOM 2	2.99M X 3.82M	9' 10" X 12' 6"
BALCONY	10.06 SQ M	108 SQ FT

LEVEL 27



ELEVATION SOUTH WEST SOUTH EAST



Washing machine
 Integrated fridge freezer
 4 ring hob
 C Cupboard
 U Utility room
 | TV
 PS Privacy screen
 P Pantry

Floor plans shown are approximate measurements only. Exact layout and size may vary. All measurements may vary within a tolerance of 5%. Please note, the furniture is not included. Please contact the Chelsea Creek sales team for further details.

2 BEDROOM

APARTMENT 1160
LEVEL 8

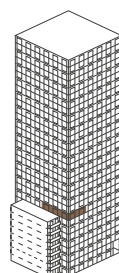


TOTAL INTERNAL AREA	79.42 SQ M	855 SQ FT
LIVING / DINING	4.63M X 3.94M	15' 2" X 12' 11"
KITCHEN	3.25M X 2.26M	10' 8" X 7' 5"
BEDROOM 1	3.54M X 3.42M	11' 7" X 11' 2"
BEDROOM 2	2.87M X 3.86M	9' 5" X 12' 8"
BALCONY	10.08 SQ M	108 SQ FT

LEVEL 8



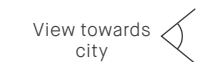
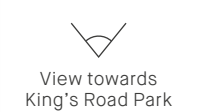
ELEVATION NORTH EAST
NORTH WEST



Washing machine
 Integrated fridge freezer
 4 ring hob
 C Cupboard
 U Utility room
 TV
 PS Privacy screen

2 BEDROOM

APARTMENTS 1165, 1170, 1185, 1190, 1205, 1210, 1225, 1230, 1245 & 1250
LEVELS 9, 10, 13, 14, 17, 18, 21, 22, 25 & 26

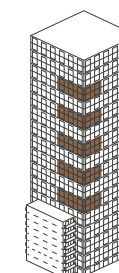


TOTAL INTERNAL AREA	79.42 SQ M	855 SQ FT
LIVING / DINING	4.63M X 3.94M	15' 2" X 12' 11"
KITCHEN	3.25M X 2.26M	10' 8" X 7' 5"
BEDROOM 1	3.54M X 3.42M	11' 7" X 11' 2"
BEDROOM 2	2.87M X 3.88M	9' 5" X 12' 9"
BALCONY	10.08 SQ M	108 SQ FT

LEVEL 9



ELEVATION NORTH EAST
NORTH WEST



Floor plans shown are approximate measurements only. Exact layout and size may vary. All measurements may vary within a tolerance of 5%. Please note, the furniture is not included. Please contact the Chelsea Creek sales team for further details.

2 BEDROOM

APARTMENTS 1175, 1180, 1195, 1200, 1215, 1220, 1235 & 1240
LEVELS 11, 12, 15, 16, 19, 20, 23 & 24

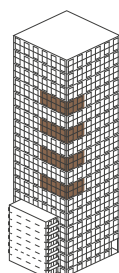


TOTAL INTERNAL AREA	79.42 SQ M	855 SQ FT
LIVING / DINING	4.63M X 3.94M	15' 2" X 12' 11"
KITCHEN	3.25M X 2.26M	10' 8" X 7' 5"
BEDROOM 1	3.54M X 3.42M	11' 7" X 11' 2"
BEDROOM 2	2.87M X 3.86M	9' 5" X 12' 8"
BALCONY	10.08 SQ M	108 SQ FT

LEVEL 11



ELEVATION NORTH EAST NORTH WEST



Washing machine
 Integrated fridge freezer
 4 ring hob
 C Cupboard
 U Utility room
 TV
 PS Privacy screen

2 BEDROOM

APARTMENTS 1255 & 1260
LEVELS 27 & 28

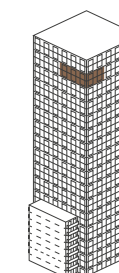


TOTAL INTERNAL AREA	79.65 SQ M	857 SQ FT
LIVING / DINING	4.63M X 3.94M	15' 2" X 12' 11"
KITCHEN	3.25M X 2.26M	10' 8" X 7' 5"
BEDROOM 1	3.54M X 3.42M	11' 7" X 11' 2"
BEDROOM 2	2.87M X 3.88M	9' 5" X 12' 9"
BALCONY	10.08 SQ M	108 SQ FT

LEVEL 27



ELEVATION NORTH EAST NORTH WEST



Floor plans shown are approximate measurements only. Exact layout and size may vary. All measurements may vary within a tolerance of 5%. Please note, the furniture is not included. Please contact the Chelsea Creek sales team for further details.

3 BEDROOM

APARTMENT 1122*
LEVEL 2

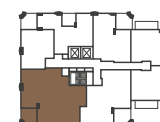


View towards Fulham

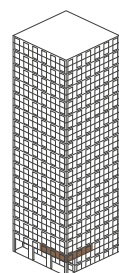
View of landscaping

TOTAL INTERNAL AREA	120.53 SQ M	1297 SQ FT
LIVING ROOM	5.15M X 3.75M	16' 11" X 12' 4"
DINING	3.22M X 3.34M	10' 7" X 11' 0"
KITCHEN	2.28M X 3.34M	7' 6" X 11' 0"
BEDROOM 1	3.41M X 3.57M	11' 2" X 11' 8"
BEDROOM 2	3.19M X 3.30M	10' 5" X 10' 10"
BEDROOM 3	2.91M X 3.99M	9' 7" X 13' 1"
BALCONY	10.06 SQ M	108 SQ FT

LEVEL 2



ELEVATION SOUTH WEST SOUTH EAST



WM Washing machine
 FF Integrated fridge freezer
 4 4 ring hob
 C Cupboard
 U Utility room
 TV TV
 PS Privacy screen

*Apartment 1122 is wheelchair adaptable, please contact the Sales Team for more information.

3 BEDROOM

APARTMENTS 1129*, 1136* & 1157
LEVELS 3, 4 & 7



View towards Fulham

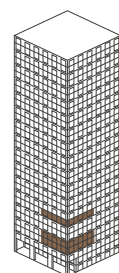
View of landscaping

TOTAL INTERNAL AREA	120.30 SQ M	1295 SQ FT
LIVING ROOM	5.15M X 3.75M	16' 11" X 12' 4"
DINING	3.22M X 3.34M	10' 7" X 11' 0"
KITCHEN	2.28M X 3.34M	7' 6" X 11' 0"
BEDROOM 1	3.41M X 3.57M	11' 2" X 11' 8"
BEDROOM 2	3.19M X 3.30M	10' 5" X 10' 10"
BEDROOM 3	2.91M X 3.99M	9' 7" X 13' 1"
BALCONY	10.06 SQ M	108 SQ FT

LEVEL 3



ELEVATION SOUTH WEST SOUTH EAST



Floor plans shown are approximate measurements only. Exact layout and size may vary. All measurements may vary within a tolerance of 5%. Please note, the furniture is not included. Please contact the Chelsea Creek sales team for further details.

*Apartments 1129 & 1136 are wheelchair adaptable, please contact the Sales Team for more information.

3 BEDROOM

APARTMENTS 1143* & 1150*
LEVELS 5 & 6



View towards Fulham

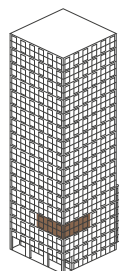
View of landscaping

TOTAL INTERNAL AREA	120.30 SQ M	1,295 SQ FT
LIVING ROOM	5.15M X 3.75M	16' 11" X 12' 4"
DINING	3.22M X 3.34M	10' 7" X 11' 0"
KITCHEN	2.28M X 3.34M	7' 6" X 11' 0"
BEDROOM 1	3.41M X 3.57M	11' 2" X 11' 8"
BEDROOM 2	3.19M X 3.30M	10' 5" X 10' 10"
BEDROOM 3	2.91M X 3.99M	9' 7" X 13' 1"
BALCONY	10.06 SQ M	108 SQ FT

LEVEL 5



ELEVATION SOUTH WEST SOUTH EAST



3 BEDROOM

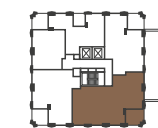
APARTMENT 1161
LEVEL 8



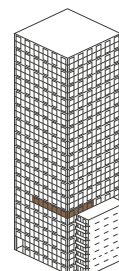
View towards Battersea

TOTAL INTERNAL AREA	117.57 SQ M	1,266 SQ FT
LIVING ROOM	5.25M X 3.46M	17' 3" X 11' 4"
DINING	3.11M X 3.84M	10' 2" X 12' 7"
KITCHEN	2.91M X 3.93M	9' 6" X 12' 11"
BEDROOM 1	3.04M X 3.33M	10' 0" X 10' 11"
BEDROOM 2	2.80M X 3.24M	9' 2" X 10' 7"
BEDROOM 3	2.77M X 3.65M	9' 1" X 12' 0"
BALCONY	11.00 SQ M	118 SQ FT

LEVEL 8



ELEVATION SOUTH EAST NORTH EAST



Washing machine Integrated fridge freezer 4 ring hob C Cupboard U Utility room TV PS Privacy screen P Pantry

*Apartments 1143 & 1150 are wheelchair adaptable, please contact the Sales Team for more information.

Floor plans shown are approximate measurements only. Exact layout and size may vary. All measurements may vary within a tolerance of 5%. Please note, the furniture is not included. Please contact the Chelsea Creek sales team for further details.

3 BEDROOM

APARTMENTS 1166, 1171, 1186, 1191, 1206, 1211, 1226, 1231, 1246 & 1251
LEVELS 9, 10, 13, 14, 17, 18, 21, 22, 25 & 26



View towards
Battersea

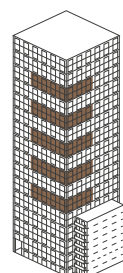
View
towards City

TOTAL INTERNAL AREA	117.57 SQ M	1,266 SQ FT
LIVING ROOM	5.25M X 3.46M	17' 3" X 11' 4"
DINING	3.11M X 3.84M	10' 2" X 12' 7"
KITCHEN	2.91M X 3.93M	9' 6" X 12' 11"
BEDROOM 1	3.04M X 3.34M	10' 0" X 10' 11"
BEDROOM 2	2.80M X 3.24M	9' 2" X 10' 7"
BEDROOM 3	2.77M X 3.65M	9' 1" X 12' 0"
BALCONY	11.00 SQ M	118 SQ FT

LEVEL 9



ELEVATION
SOUTH EAST
NORTH EAST



Washing machine
 Integrated fridge freezer
 4 ring hob
 C Cupboard
 U Utility room
 TV
 PS Privacy screen
 P Pantry

3 BEDROOM

APARTMENTS 1176, 1181, 1196, 1201, 1216, 1221, 1236 & 1241
LEVELS 11, 12, 15, 16, 19, 20, 23 & 24



View towards
Battersea

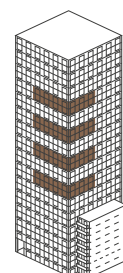
View
towards City

TOTAL INTERNAL AREA	117.57 SQ M	1,266 SQ FT
LIVING ROOM	5.25M X 3.46M	17' 3" X 11' 4"
DINING	3.11M X 3.84M	10' 2" X 12' 7"
KITCHEN	2.91M X 3.93M	9' 6" X 12' 11"
BEDROOM 1	3.04M X 3.33M	10' 0" X 10' 11"
BEDROOM 2	2.80M X 3.24M	9' 2" X 10' 7"
BEDROOM 3	2.77M X 3.65M	9' 1" X 12' 0"
BALCONY	11.00 SQ M	118 SQ FT

LEVEL 11



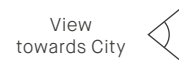
ELEVATION
SOUTH EAST
NORTH EAST



Floor plans shown are approximate measurements only. Exact layout and size may vary. All measurements may vary within a tolerance of 5%. Please note, the furniture is not included. Please contact the Chelsea Creek sales team for further details.

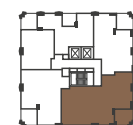
3 BEDROOM

APARTMENTS 1256 & 1261
LEVELS 27 & 28

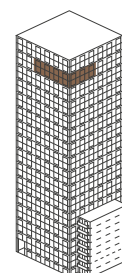


TOTAL INTERNAL AREA	117.78 SQ M	1,268 SQ FT
LIVING ROOM	5.25M X 3.46M	17' 3" X 11' 4"
DINING	3.11M X 3.84M	10' 2" X 12' 7"
KITCHEN	2.91M X 3.93M	9' 6" X 12' 11"
BEDROOM 1	3.04M X 3.33M	10' 0" X 10' 11"
BEDROOM 2	2.80M X 3.24M	9' 2" X 10' 7"
BEDROOM 3	2.77M X 3.90M	9' 1" X 12' 9"
BALCONY	11.06 SQ M	119 SQ FT

LEVEL 27



ELEVATION SOUTH EAST NORTH EAST



Washing machine
 Integrated fridge freezer
 4 ring hob
 C Cupboard
 U Utility room
 TV
 PS Privacy screen
 P Pantry

Floor plans shown are approximate measurements only. Exact layout and size may vary. All measurements may vary within a tolerance of 5%.

Please note, the furniture is not included. Please contact the Chelsea Creek sales team for further details.



THE DUPLEX PENTHOUSES

The Imperial's spacious duplex penthouses are designed to welcome in natural light, with each apartment meticulously finished to the highest standard, to create a haven of calm from the moment you step in the door.



Penthouse (Computer generated image, indicative only)

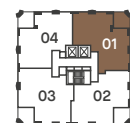
4 BEDROOM DUPLEX

APARTMENT 1265
LEVELS 29 and 30

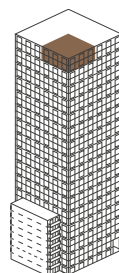


TOTAL INTERNAL AREA	207.62 SQ M	2,235 SQ FT
LIVING ROOM	8.30M X 4.02M	27' 3" X 13' 2"
DINING	4.60M X 4.97M	15' 1" X 16' 4"
KITCHEN	4.60M X 3.25M	15' 1" X 10' 8"
BALCONY	11.34 SQ M	122 SQ FT

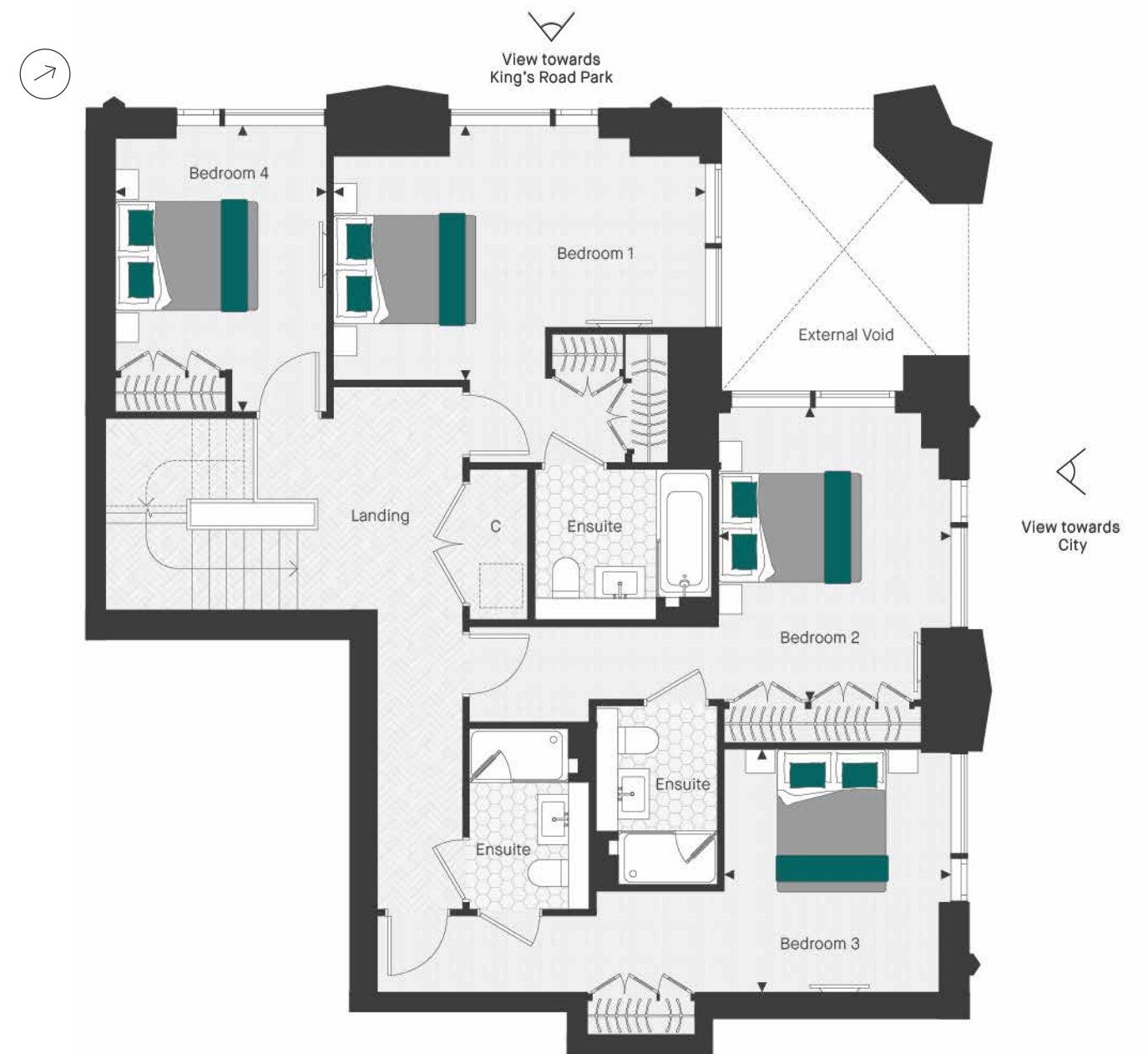
LEVEL 29



ELEVATION
NORTH WEST
NORTH EAST



Washing machine
 Integrated fridge freezer
 4 ring hob
 C Cupboard
 U Utility room
 TV
 PS Privacy screen



BEDROOM 1	5.23M X 3.56M	17' 2" X 11'8"
BEDROOM 2	3.25M X 4.14M	10' 8" X 13' 7"
BEDROOM 3	3.17M X 3.37M	10' 5" X 11' 1"
BEDROOM 4	2.98M X 4.00M	9' 9" X 13' 2"

LEVEL 30



Floor plans shown are approximate measurements only. Exact layout and size may vary. All measurements may vary within a tolerance of 5%. Please note, the furniture is not included. Please contact the Chelsea Creek sales team for further details.

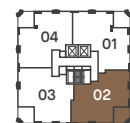
3 BEDROOM DUPLEX

APARTMENT 1266
LEVELS 29 and 30

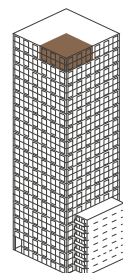


TOTAL INTERNAL AREA	199.46 SQ M	2,147 SQ FT
LIVING ROOM	4.94M X 7.48M	16' 2" X 24' 6"
DINING	5.21M X 3.59M	17' 1" X 11' 9"
KITCHEN	3.10M X 4.97M	10' 2" X 16' 4"
BALCONY	11.32 SQ M	122 SQ FT

LEVEL 29



ELEVATION SOUTH EAST NORTH EAST



Washing machine
 Integrated fridge freezer
 4 ring hob
 C Cupboard
 U Utility room
 TV TV
 PS Privacy screen
 P Pantry



BEDROOM 1	4.56M X 3.17M	14' 11" X 10' 5"
BEDROOM 2	3.33M X 3.85M	10' 11" X 12' 8"
BEDROOM 3	5.81M X 3.58M	19' 1" X 11' 9"

LEVEL 30



Floor plans shown are approximate measurements only. Exact layout and size may vary. All measurements may vary within a tolerance of 5%. Please note, the furniture is not included. Please contact the Chelsea Creek sales team for further details.



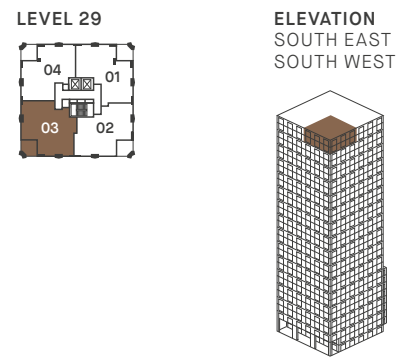
Penthouse balcony view (Computer generated image, indicative only)

3 BEDROOM DUPLEX

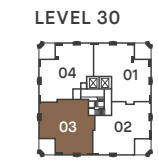
APARTMENT 1267
LEVELS 29 and 30



TOTAL INTERNAL AREA	205.05 SQ M	2,207 SQ FT
LIVING ROOM	7.49M X 4.28M	24' 7" X 14' 1"
DINING	6.58M X 4.51M	21' 7" X 14' 9"
KITCHEN	4.26M X 3.10M	14' 0" X 10' 2"
BALCONY	11.32 SQ M	122 SQ FT



BEDROOM 1	4.90M X 4.34M	16' 1" X 14' 3"
BEDROOM 2	3.56M X 3.73M	11' 8" X 12' 3"
BEDROOM 3	3.51M X 3.06M	11' 6" X 10' 0"



☐ Washing machine
 ☒ Integrated fridge freezer
 ☒ 4 ring hob
 C Cupboard
 U Utility room
 | TV
 PS Privacy screen
 P Pantry

Floor plans shown are approximate measurements only. Exact layout and size may vary. All measurements may vary within a tolerance of 5%. Please note, the furniture is not included. Please contact the Chelsea Creek sales team for further details.



Penthouse dining (Computer generated image, indicative only)

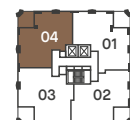
3 BEDROOM DUPLEX

APARTMENT 1268
LEVELS 29 and 30

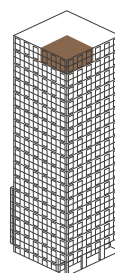


TOTAL INTERNAL AREA	199.09 SQ M	2,143 SQ FT
LIVING ROOM	5.04M X 5.06M	16' 7" X 16' 7"
DINING	3.93M X 4.49M	12' 11" X 14' 9"
KITCHEN	3.93M X 3.10M	12' 11" X 10' 2"
STUDY	2.75M X 4.20M	9' 0" X 13' 10"
BALCONY	11.33 SQ M	122 SQ FT

LEVEL 29

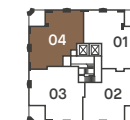


ELEVATION SOUTH WEST NORTH WEST



BEDROOM 1	3.80M X 4.22M	12' 6" X 13' 10"
BEDROOM 2	4.12M X 3.43M	13' 6" X 11' 3"
BEDROOM 3	3.67M X 3.79M	12' 1" X 12' 5"

LEVEL 30



Floor plans shown for The Imperial are approximate measurements and areas only. Exact layouts, sizes, measurements and areas may vary within a tolerance of 5%. The net sales area is based on the RICS standard method of measurement and is the internal areas of the home including internal partitions, internal columns and service boxing. The dimensions and areas are not intended to be used for carpet sizes, appliance sizes or items of furniture. Furniture and kitchen layouts are indicative only. Colours are indicative only and may vary depending on the customer palette selection. Electrical positions shown are indicative only. Views are indicative only. Please ask a Sales Consultant for further information.

Washing machine
 Integrated fridge freezer
 4 ring hob
 Cupboard
 Utility room
 TV
 PS Privacy screen
 P Pantry

Floor plans shown are approximate measurements only. Exact layout and size may vary. All measurements may vary within a tolerance of 5%. Please note, the furniture is not included. Please contact the Chelsea Creek sales team for further details.



Bedroom (Computer generated image, indicative only)

APARTMENT SPECIFICATION



GENERAL SPECIFICATION

- Comfort Cooling to living room and bedroom ¹
- Aluminium powder-coated external doors and windows
- Engineered herringbone timber flooring to living room, kitchen and hallway
- Carpet to bedrooms ²
- Fitted wardrobes with drawer pack ³
- Painted and fluted glass wardrobe doors
- Feature painted skirting and architraves
- Painted internal doors with feature routing detail
- Glass doors to living rooms ⁴
- Coved coffer to dining area ⁵
- Coved coffer to Duplex living areas
- Bronze effect ironmongery
- Balcony
- 10-year warranty from date of legal completion
- 999-year lease from 1 June 2010

KITCHENS

- Fully integrated kitchen
- Composite stone worktop and splashback
- Contemporary shaker style painted kitchen doors
- Brushed brass effect door handles
- Stainless steel recessed sink
- Integrated Miele electronic oven
- Integrated Miele induction hob
- Integrated extractor fan (re-circulating)
- Integrated Miele microwave
- Integrated Miele fridge / freezer
- Integrated Miele dishwasher
- Deck-mounted mixer tap in brushed brass finish
- Washer / dryer ⁶
- Feature lighting below high level cupboards
- Integrated wine cooler
- Feature glass display unit at high level ⁷
- Fitted pantry with lit glass shelving where located on plan

BATHROOMS & ENSUITES

- Brass effect mirrored vanity units
- Feature tiles to vanity wall
- Feature deck-mounted basin
- Brass effect taps and accessories
- Brass effect overhead shower and handheld shower in shower enclosure
- Brass effect framed glass shower and bath screen / enclosure
- Marble wall and floor tiles ⁸
- Wall-mounted WC

LIGHTING & ELECTRICAL

- Down lighters to all rooms
- Lighting to balconies
- Feature wall lights to ensuite and bathrooms
- Bronze effect light switches
- Brushed brass effect sockets to kitchen
- White plastic sockets elsewhere
- TV provision to living room and bedrooms
- BT Fibre optic and Hyperoptic broadband to hall cupboard with LAN connections to living room and bedrooms
- Electrical underfloor heating to bathrooms and ensuites
- Brass effect heated towel rail in ensuites and bathroom
- Philips Hue lighting to living rooms, kitchens (including under counter lighting) and bedrooms (excluding en-suites and wardrobes). Amazon Echo Dot supplied.

SECURITY & EXTERNAL

- Multi-point high security door locking system to entrance door with spy hole
- 24-hour concierge ⁹
- CCTV security system to carpark, entrance lobby and development ¹⁰
- Video entry phone system connected to front entrance door panel and concierge
- Smoke detection and sprinkler systems to apartments

RESIDENTS' FACILITIES

- Exclusive access to The Spa with swimming pool, sauna, steam room, treatment room, gymnasium and The Imperial Residents Lounge ¹¹
- Landscaped park, waterways and dockside plaza ¹²
- Interior designed entrance lobbies and corridors ¹³
- Residents' Home Cinema room ¹⁴

1. The comfort cooling system is designed to provide an ambient temperature within the apartment for the majority of external temperatures. This may not be achieved in extreme temperature conditions

2. Apart from Manhattan apartments which have engineered herringbone timber flooring to bedrooms

3. One drawer pack provided in each bedroom. Location dependant on each apartment layout

4. Not applicable to Manhattan apartments

5. Three bedroom homes only

6. Washer / dryer located in hallway cupboard

7. Subject to kitchen layout

8. Marble is a natural product and is therefore subject to natural variation.

9. Payable via the service charge

10. Payable via the service charge. Phased in over the course of the development

11. Membership of The Spa is payable via the service charge. Additional charges may be payable for select services

12. Maintenance payable via the service charge to be phased in over the course of the development

13. Maintenance payable via the service charge

14. Payable via the service charge